

# LRS

LASSLE RANCH SIMMENTALS



**33<sup>RD</sup> ANNUAL BULL SALE**

**FEBRUARY 12, 2026 // 1:00 PM MST // AT THE RANCH // GLENDIVE, MT**

# LASSLE RANCH SIMMENTALS

# Welcome!

Welcome to our 33rd annual production sale. We continue to be humbled and blessed by the support that we have received over the last 33 years. We value the friendships that have been made, and they mean the world to us. The trust you have put in our genetics to keep your operations on the right track is what keeps us focused year after year to ensure we are providing the next generation of genetics that will keep your operations viable in the future.

Once again in 2025 we were honored to be one of only 40 herds in America recognized by the American Simmental Association as a performance advocate. The ASA has been recognizing herds for the past 16 years who maintain a commitment to reporting data. This real phenotypic data combined with every animal having genomically enhanced EPD's, utilizing tools like RightMate and RightChoice, allows us to offer these bulls with the most accurate and up to date information to make your genetic selections. Nothing is guaranteed, but we try to take as much of the guesswork out of it for you.

We turned cows out again last spring with a lack of moisture, but were blessed to receive some rain in July that really benefited the herd. The calves came in heavier than the last couple years and the cows were really bred up and came home this fall in great shape again. We continue to make breeding and culling decisions to select for a cowherd that can withstand the challenges and ups and downs of our environment. These cows are the backbone of our operation,

and the backbone of these bulls in the sale. We truly believe that behind every good bull is a foundation of proven cows that have stood the test of time. The markets are at levels we have not experienced before, and we are hopeful they can stay this way for the years to come. It sure is an exciting time to be in the cattle business.

Once again, we are offering some bred females in the sale this year. We have been keeping some extra heifers to breed, and as long as the breed up on the cowherd is good, we can make some for sale. Whether you are a commercial producer looking for a small group of bred heifers for your herd, or a purebred breeder looking for right genetic piece, we hope there is something in this group that will fit your program.

We hope you can be with us on February 12th but know that sometimes that is not possible. Once again, we will be utilizing DVAuction.com as our online platform and all bulls and females will have videos posted there ahead of the sale.

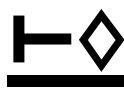
In closing, thank you for your support of our program for the last 33 years. The ranch doors are always open to view the bulls and the cowherd behind them. We do offer a \$250 sale credit to view the bulls ahead of the sale. If you have any questions, please do not hesitate to give us a call. We look forward to seeing you on the 12th!

Clay and Marianne Lassle  
Ryan, Sarah, Grace, and Harper Thorson



# LRS

## LASSLE RANCH SIMMENTALS



**FEBRUARY 12, 2026 // 1:00 PM MST AT THE RANCH // GLENDDIVE, MT**

### CONTACT INFORMATION

Clay & Marianne Lassle  
42 Road 245 | Glendive, MT 59330  
Home 406-486-5584 | lrsbeef@midrivers.com  
Sarah & Ryan Thorson 406-694-3722

### SALE SCHEDULE & LOCATION

Thursday, February 12, 2026 | 1:00 PM MST  
At the Ranch - Glendive, MT  
Sale barn address: 42 Road 245 Glendive, MT 59330  
Lunch Served ..... 11:30 a.m. MST  
Sale Time.....1:00 p.m. MST

### SALE DAY PHONE NUMBERS

Clay Lassle, cell .....406-939-1348  
Ryan Thorson, cell.....406-694-3722  
Sarah Thorson, cell.....406-694-3760  
Lassle Sale Barn.....406-486-5585

### SALE REPRESENTATIVES

Jeff Thomas, *The Prairie Star/Farm and Ranch Guide* .....406-581-8859  
Rocky Forseth, *Allied Genetic Resources* .....406-590-7984  
John Goggins, *Western Ag Reporter* .....406-698-4159  
Kevin Murnin, *Western Livestock Journal* .....406-853-4638  
Andy Roberts, *ASA SimSpecialist*.....406-852-4387

### AUCTIONEER

Roger Jacobs, Billings, MT .....406-698-7686

### AREA MOTELS

LaQuinta Inn & Suites .....406-377-7300  
Astoria Inn of Glendive .....406-377-6000  
Yellowstone River Inn.....406-377-4433  
Holiday Inn Express .....406-377-3300

### EPD DATA

EPDs are current as of January 9, 2026. View the current EPDs online at [herdbook.org](http://herdbook.org)

### SALE DIRECTIONS

**Going west on I-94 out of Glendive – 18 miles**

- Take Exit 198 – Crackerbox Exit – Turn left off interstate, go 1/4 mile
- Take a right onto CR 261 go 2 1/2 miles there will be 5 mailboxes and a Lassle sign
- Turn left onto Road 245 go 1/4 mile you will see another Lassle sign as you enter the yard.

**Going east on I-94 from Miles City**

- Take exit 192 – Bad Route Rest Area – turn right off interstate go 1/2 - 3/4 mile
- Turn left onto CR 261
- Go approximately 3 miles to group of mailboxes with Lassle sign
- Turn right onto road 245 go 1/4 mile you will see another Lassle sign as you enter the yard

### ABSENTEE BIDDING OPTIONS

**SIGHT UNSEEN PURCHASE GUARANTEE!**

#### Be on the Phone

If you would like to be on the phone with one someone during the sale, call one of the sale day phone numbers and we will make arrangements.

#### Leave us your Order

Call and visit with Ryan, Clay or one of our Sale Representatives ahead of the sale and leave your order with them. Your order will be handled with respect and confidentiality.

### ONLINE BIDDING WITH DVAUCTION

Sale Broadcasted Live on DVAuction  
[www.dvauction.com](http://www.dvauction.com) // 402-316-5460

\*Find more details on how to view & bid with

DVAuction on page 32

**DVAuction**  
Broadcasting Real-Time Auctions



To view bull videos scan QR code  
or visit [dvauction.com](http://dvauction.com)

**ALLIED**  
GENETIC RESOURCES

# LASSLE RANCH SIMMENTALS



*Full Brothers  
Lots 1-2*

*Lot 2*



1

**LRS 0135N**

BD: 3/6/25 • ASA#: 4522213 • Tattoo: 0135N  
PB SM • Homozygous Polled • Homozygous Black

LBRs GENESIS G69

sire: **KBHR DISCIPLINE L046**

BAR CK MS X38 106Z

HOOK'S EAGLE 6E

dam: **LRS MS EAGLE 983G**

LRS MS CLASS ACT 437B



Act. BW	88
BW Ratio	ET
Adj WW	787
WW Ratio	ET
Adj YW	1376
YW Ratio	ET
WDA	3.84
ADG	3.70
Adj SC	40.6

Rank	CE	BW	WW	YW	ADG	MCE	Milk	STAY	DOC	CW	Marb	BF	REA	API	TI
65	8.5	1.4	107.7	164.9	0.36	4.3	21.1	18.7	15.9	69.0	0.40	-0.063	1.13	161.0	103.3

983G x Discipline flush. No surprise we lead off the catalog with some flush brothers out of the 983G cow. She continues to set the bar for genetic excellence. If you ask Harper, all Clay and I did all spring was talk about this calf from when he was a week old, and he still rises to the top. Combines top tier growth traits, excellent stayability, great API, and the phenotype of a true beef bull. Genetic and phenotypic excellence all wrapped up into one. Full Brother to Lots 2, 17, 29, 45, and 46.

2

**LRS 5244N**

BD: 3/5/25 • ASA#: 4522067 • Tattoo: 5244N  
PB SM • Homozygous Polled • Homozygous Black

LBRs GENESIS G69

sire: **KBHR DISCIPLINE L046**

BAR CK MS X38 106Z

HOOK'S EAGLE 6E

dam: **LRS MS EAGLE 983G**

LRS MS CLASS ACT 437B



Act. BW	82
BW Ratio	ET
Adj WW	738
WW Ratio	ET
Adj YW	1306
YW Ratio	ET
WDA	3.63
ADG	3.57
Adj SC	41.6

Rank	CE	BW	WW	YW	ADG	MCE	Milk	STAY	DOC	CW	Marb	BF	REA	API	TI
15	14.4	-3.3	84.5	131.2	0.29	8.0	21.1	21.3	14.2	47.3	0.71	-0.042	0.81	190.0	103.4

983G x Discipline flush. This full brother to lot 1 doesn't take a back seat but there can only be one lot 1. Touch larger framed than his brother who leads off the sale and when you study him in person he reads like his EPDs predict with more calving ease and just a little less power than his brother, but with the combination of the 983G and 106Z cow it is no surprise they have great stability and he is in the top 2% for API. Full brother to lots 1, 17, 29, 45 and 46.



Lot 3



Lot 4

3

## LRS 177N

BD: 3/6/25 • ASA#: 4522247 • Tattoo: 177N  
3/4 SM 1/4 AN • Homozygous Polled • Homozygous Black

ASR AMERICAN PROUD H0301

sire: LRS DUTTON 611K

LRS MS EAGLE 983G

LRS BADLANDS 401F

dam: LRS MS BADLANDS 177J

LRS MS TOP TEN 730E

Act. BW	90
BW Ratio	107
Adj WW	798
WW Ratio	113
Adj YW	1324
YW Ratio	106
WDA	3.71
ADG	3.32
Adj SC	39.1



Rank	CE	BW	WW	YW	ADG	MCE	Milk	STAY	DOC	CW	Marb	BF	REA	API	TI
7.1	2.6	96.3	149.2	0.33	5.9	22.7	15.9	12.9	51.8	0.45	-0.054	1.36	137.2	91.9	
90	95	10	10	20	70	65	45	50	20	45	25	1	50	25	

Sired by LRS Dutton who was our top seller in 2023 to Select Sires and Trauernicht Simmentals and has been doing an excellent job all over the country. We love our calves and you will too. He is a bull that will add pay weight at weaning because the calves are so thick and dense. Just shy of 800 lbs off the cow to ratio 113.

4

## LRS 111N

BD: 3/13/25 • ASA#: 4522226 • Tattoo: 111N  
3/4 SM 1/4 AN • Homozygous Polled • Homozygous Black

ASR AMERICAN PROUD H0301

sire: LRS DUTTON 611K

LRS MS EAGLE 983G

BSUM EINSTEIN 929G

dam: LRS MS EMBER 111J

LRS MS PREMIUM 9140G

Act. BW	84
BW Ratio	99
Adj WW	750
WW Ratio	105
Adj YW	1404
YW Ratio	110
WDA	3.88
ADG	4.12
Adj SC	42.0



Rank	CE	BW	WW	YW	ADG	MCE	Milk	STAY	DOC	CW	Marb	BF	REA	API	TI
9.9	1.0	94.3	144.3	0.31	6.1	24.6	21.1	15.5	60.3	0.44	-0.018	1.17	151.2	92.0	
70	70	10	15	30	65	45	4	20	10	45	75	2	25	20	

Harper's bull who has been a standout all year and weaned off at 750 lbs. Dam has an excellent udder and great feet and offers a different pedigree than many of our cows. You will like this Dutton bull calf.

# LASSLE RANCH SIMMENTALS

## LRS 190N

5

BD: 2/27/25 • ASA#: 4522251 • Tattoo: 190N  
PB SM • Homozygous Polled • Homozygous Black

GIBBS 7382E BROAD RANGE

sire: **LRS RANGER 445K**

LRS MS EAGLE 983G

LRS BADLANDS 401F

dam: **LRS MS BADLANDS 190J**

LRS MS TOPGRADE 331A



Act. BW	88
BW Ratio	105
Adj WW	757
WW Ratio	107
Adj YW	1239
YW Ratio	99
WDA	3.46
ADG	3.04
Adj SC	40.2

Rank	CE	BW	WW	YW	ADG	MCE	Milk	STAY	DOC	CW	Marb	BF	REA	API	TI
95	4.3	1.0	97.0	151.9	0.34	5.5	21.8	14.0	15.2	63.3	0.72	-0.070	1.30	161.2	105.2

Ranger sired our top 2 selling bulls in last year's sale, and he did a great job again for us this year. Power, performance, and a smokin hot phenotype best describe this bull who weaned over 750 lbs.

## LRS 786N

6

BD: 3/12/25 • ASA#: 4522099 • Tattoo: 786N  
PB SM • Homozygous Polled • Homozygous Black

GIBBS 7382E BROAD RANGE

sire: **LRS RANGER 445K**

LRS MS EAGLE 983G

KS IRON MAN C477

dam: **LRS MS IRON MAN 786E**

LRS MS PREF STOCK 958W



Act. BW	84
BW Ratio	98
Adj WW	746
WW Ratio	105
Adj YW	1334
YW Ratio	107
WDA	3.75
ADG	3.69
Adj SC	37.5

Rank	CE	BW	WW	YW	ADG	MCE	Milk	STAY	DOC	CW	Marb	BF	REA	API	TI
35	11.4	0.0	90.8	149.6	0.37	5.1	19.6	17.2	13.7	52.1	0.26	-0.039	1.19	151.8	92.4

Ranger Sired bull out of a coming 9 year old cow that every bull calf she has had has gone through the sale. The Ranger calves are like the Dutton's as they will add performance.

## LRS 1180N

7

BD: 3/16/25 • ASA#: 4522220 • Tattoo: 1180N  
3/4 SM 1/4 AN • Homozygous Polled • Homozygous Black

GIBBS 7382E BROAD RANGE

sire: **LRS RANGER 445K**

LRS MS EAGLE 983G

MUSGRAVE 316 STUNNER

dam: **LRS MS STUNNER 1180J**

LRS MS TOPGRADE 3015A



Act. BW	92
BW Ratio	108
Adj WW	790
WW Ratio	111
Adj YW	1450
YW Ratio	116
WDA	4.04
ADG	4.16
Adj SC	38.7

Rank	CE	BW	WW	YW	ADG	MCE	Milk	STAY	DOC	CW	Marb	BF	REA	API	TI
85	8.0	0.4	101.3	172.5	0.44	3.2	24.7	16.8	11.8	49.0	0.49	-0.015	1.08	150.4	99.2

Just shy of 800 lbs when we weaned him off of his dam. She is a daughter of the old 3015A cow that we flushed for many years and is ratioing 106 at weaning on her progeny.

## LRS 356N

8

BD: 2/4/25 • ASA#: 4522357 • Tattoo: 356N  
1/2 SM 1/2 AN • Homozygous Polled • Homozygous Black

TEHAMA PATRIARCH F028

sire: **CCR ANTHEM 3355J**

CCR Ms 5161 Cowboy 8636F

DB ICONIC G95

dam: **LRS MS POLLY 356L**

LRS Ms Cleo 0142H



Act. BW	74
BW Ratio	108
Adj WW	776
WW Ratio	109
Adj YW	1415
YW Ratio	114
WDA	3.67
ADG	4.05
Adj SC	40.0

Rank	CE	BW	WW	YW	ADG	MCE	Milk	STAY	DOC	CW	Marb	BF	REA	API	TI
60	11.0	0.4	98.5	152.5	0.34	6.4	26.6	20.1	15.9	52.3	0.54	0.018	0.48	157.4	96.8

Grace's first calf heifer hit a home run on this one. Dam is a daughter of the 0142H cow, who was the dam of our top selling bulls last year. Sired by our herd sire CCR Anthem, this calf has been a standout since early spring. He has so many maternal characteristics when you study him and yet he has been a performance machine all along. A great combination bull and backed by a proven line of cows on this ranch. I think he is better than the picture we got of him and the lead off 1/2 blood bull to sell.



Lot 5

## LOT COLOR CODES



### UNDERSTANDING LOT NUMBER COLOR CODES

Green Ear Tags

Blue Ear Tags

Yellow Ear Tags

Purebred Simmental

3/4 Simmental

5/8 or 1/2 Simmental



Lot 7



Lot 8

9

## LRS 079N

BD: 3/7/25 • ASA#: 4522206 • Tattoo: 079N  
3/4 SM 1/4 AN • Homozygous Polled • Homozygous Black

GIBBS 7382E BROAD RANGE

sire: LRS RANGER 445K

LRS MS EAGLE 983G

BASIN RAINMAKER 4404

dam: LRS MS RAINMAKER 079H

LRS MS AXIS 228Z



Act. BW	92
BW Ratio	107
Adj WW	764
WW Ratio	108
Adj YW	1313
YW Ratio	105
WDA	3.72
ADG	3.46
Adj SC	38.7

Rank	CE	BW	WW	YW	ADG	MCE	Milk	STAY	DOC	CW	Marb	BF	REA	API	TI
6.1	2.9	99.5	160.3	0.38	4.8	24.4	17.0	15.6	67.2	0.24	-0.062	1.41	128.2	88.4	
95	95	4	4	5	85	45	30	15	3	75	15	1	60	35	

Another performance oriented son of Ranger who ratioed 108 off the cow. Dam is a productive Rainmaker 4404 daughter who is ratioing over 100 for both WW and YW on her first 4 calves.

10

## LRS 1104N

BD: 3/6/25 • ASA#: 4522258 • Tattoo: 1104N  
PB SM • Homozygous Polled • Homozygous Black

GIBBS 7382E BROAD RANGE

sire: LRS RANGER 445K

LRS MS EAGLE 983G

LRS BADLANDS 401F

dam: LRS MS BADLANDS 1104J

LRS MS PREMIUM 8011F



Act. BW	94
BW Ratio	112
Adj WW	881
WW Ratio	124
Adj YW	1506
YW Ratio	118
WDA	4.19
ADG	3.94
Adj SC	40.1

Rank	CE	BW	WW	YW	ADG	MCE	Milk	STAY	DOC	CW	Marb	BF	REA	API	TI
3.3	2.5	110.6	173.5	0.39	3.9	24.9	19.4	16.5	57.5	0.50	-0.049	1.30	161.5	106.2	
99	75	1	1	2	85	40	15	10	4	15	85	3	15	2	

Did I mention that Ranger and Dutton will both add weight weaning time. Weighed 881 lbs and ratioed 124 at weaning!

12

## LRS 059N

BD: 3/6/25 • ASA#: 4522197 • Tattoo: 059N  
3/4 SM 1/4 AN • Homozygous Polled • Homozygous Black

WS PROCLAMATION E202

sire: KBHR GLOBAL J138

BAR CK MS X38 106Z

BASIN RAINMAKER 4404

dam: LRS MS EMERALD 059H

LRS MS STAR 5120C



Act. BW	86
BW Ratio	100
Adj WW	738
WW Ratio	101
Adj YW	1419
YW Ratio	105
WDA	3.92
ADG	4.29
Adj SC	38.1

Rank	CE	BW	WW	YW	ADG	MCE	Milk	STAY	DOC	CW	Marb	BF	REA	API	TI
8.3	0.4	87.1	134.3	0.29	7.3	25.3	19.6	16.0	70.5	0.36	-0.084	1.26	141.0	87.0	
80	60	25	30	45	45	40	10	15	2	60	3	1	40	35	

We think enough of his dam, 059H, and what she has done that we flushed her this spring. She is a great uddered, great footed Rainmaker 4404 daughter who has been doing a tremendous job for us.

13

## LRS 1150M

BD: 9/17/24 • ASA#: 4411808 • Tattoo: 1150M  
5/8 SM 3/8 AN • Homozygous Polled • Homozygous Black

TEHAMA PATRIARCH F028

sire: CCR ANTHEM 3355J

CCR MS 5161 COWBOY 8636F

BSUM EINSTEIN 929G

dam: LRS MS DAISY 1150J

LRS MS ICONIC 955G



Act. BW	84
BW Ratio	
Adj WW	734
WW Ratio	
Adj YW	
YW Ratio	
WDA	
ADG	
Adj SC	40.0

Rank	CE	BW	WW	YW	ADG	MCE	Milk	STAY	DOC	CW	Marb	BF	REA	API	TI
16.0	-2.4	72.9	114.0	0.26	8.8	27.3	20.2	16.5	38.8	0.51	0.020	0.55	157.6	85.0	
15	20	70	65	60	25	25	10	10	50	35	99	75	20	45	

Weighed 1480 lbs on January 2nd. An 18 month old bull and the only one in the sale. Out of Harper's cow Daisy and she calls him Goose because he had a brother named Duck. We have started a few fall calving cows and should have a few more of these older bulls to offer next year. Dam has a great udder, good feet and is a calf raiser.



11

## LRS 3138N

BD: 2/20/25 • ASA#: 4522394 • Tattoo: 3138N  
5/8 SM 3/8 AN • Homozygous Polled • Homozygous Black

TEHAMA PATRIARCH F028

sire: CCR ANTHEM 3355J

CCR MS 5161 COWBOY 8636F

CCR VARSITY 4112H

dam: LRS MS VARSITY 3138L

LRS MS ALTITUDE 066H



Act. BW	84
BW Ratio	103
Adj WW	776
WW Ratio	109
Adj YW	1324
YW Ratio	107
WDA	3.50
ADG	3.48
Adj SC	40.9

Rank	CE	BW	WW	YW	ADG	MCE	Milk	STAY	DOC	CW	Marb	BF	REA	API	TI
12.3	-0.4	86.6	127.9	0.26	9.4	24.8	20.3	13.3	47.6	0.45	0.013	0.79	151.0	88.7	
45	45	25	40	60	15	45	10	45	25	45	95	35	25	30	

First calf heifer who got off to a great start with this Anthem sired bull. Dam is from the same tribe as the lot 8 bull. They all trace back maternally to the 303A cow.



14

## LRS 3105N

BD: 2/25/25 • ASA#: 4522381 • Tattoo: 3105N  
5/8 SM 3/8 AN • Homozygous Polled • Homozygous Black

TEHAMA PATRIARCH F028

sire: CCR ANTHEM 3355J

CCR MS 5161 COWBOY 8636F

CCR WACO 4142G

dam: LRS MS WACO 3105L

LRS MS COMMANDER 087H



Act. BW	82
BW Ratio	101
Adj WW	751
WW Ratio	105
Adj YW	1269
YW Ratio	103
WDA	3.36
ADG	3.29
Adj SC	39.6

Rank	CE	BW	WW	YW	ADG	MCE	Milk	STAY	DOC	CW	Marb	BF	REA	API	TI
13.2	-1.0	84.1	138.0	0.34	8.2	25.6	13.3	14.4	36.7	0.66	0.003	0.50	152.3	94.1	
35	35	30	25	15	30	35	70	30	55	20	90	85	25	15	

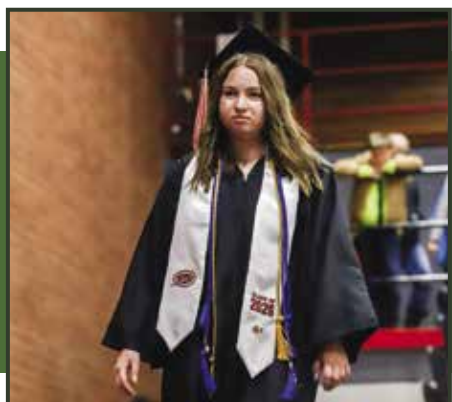
Ratioed 105 at weaning and we sure are happy with what Anthem has done for us over the last couple years.

# LASSLE RANCH SIMMENTALS

## VOLUME DISCOUNTS

### BUYER VOLUME DISCOUNTS

We will be offering discounts for volume bull buyers:  
3 head - 3% | 4 head - 4% | 5 or more head 5%



GRACE GRADUATED FROM DAWSON  
COUNTY HIGH SCHOOL IN MAY



## LRS 3115N

15

BD: 2/16/25 • ASA#: 4522386 • Tattoo: 3115N  
5/8 SM 3/8 AN • Homozygous Polled • Homozygous Black

TEHAMA PATRIARCH F028

sire: CCR ANTHEM 3355J

CCR Ms 5161 Cowboy 8636F

KS POINT TAKEN H579

dam: LRS MS POINT TAKEN 3115L

LRS Ms Gypsy 883F



Act. BW	78
BW Ratio	97
Adj WW	768
WW Ratio	114
Adj YW	1377
YW Ratio	107
WDA	3.59
ADG	3.86
Adj SC	39.6

Rank	CE	BW	WW	YW	ADG	MCE	Milk	STAY	DOC	CW	Marb	BF	REA	API	TI
45	12.2	0.2	86.2	132.4	0.29	9.7	28.4	13.7	12.2	37.9	0.46	-0.039	0.95	139.0	89.6

Bull that is hard to miss in the pens, maybe because he is really short in the ears, but mostly because he is so thick and stout. Would rank this bull more terminally, than maternally, but he will add meat and muscle.

## LRS 394N

16

BD: 2/23/25 • ASA#: 4522376 • Tattoo: 394N  
3/4 SM 1/4 AN • Homozygous Polled • Homozygous Black

LBRs GENESIS G69

sire: KBHR DISCIPLINE L046

BAR CK MS X38 106Z

LRS RARITY 983J

dam: LRS MS RARITY 394L

LRS MS BADLANDS 080H



Act. BW	80
BW Ratio	99
Adj WW	770
WW Ratio	108
Adj YW	1295
YW Ratio	105
WDA	3.43
ADG	3.33
Adj SC	41.5

Rank	CE	BW	WW	YW	ADG	MCE	Milk	STAY	DOC	CW	Marb	BF	REA	API	TI
15	16.6	-1.9	88.0	129.3	0.26	7.9	26.6	19.2	16.9	44.0	0.79	-0.023	1.11	177.4	101.5

Heifer Bull. Heifer bull that still weaned at 770 lbs off the cow and Growth EPD's that are still in the top 50% of the breed. Nothing to sacrifice here.

## LRS 9145N

17

BD: 3/10/25 • ASA#: 4522167 • Tattoo: 9145N  
PB SM • Homozygous Polled • Homozygous Black

LBRs GENESIS G69

sire: KBHR DISCIPLINE L046

BAR CK MS X38 106Z

HOOK'S EAGLE 6E

dam: LRS MS EAGLE 983G

LRS MS CLASS ACT 437B



Act. BW	90
BW Ratio	ET
Adj WW	763
WW Ratio	ET
Adj YW	1204
YW Ratio	ET
WDA	3.44
ADG	2.78
Adj SC	40.8

Rank	CE	BW	WW	YW	ADG	MCE	Milk	STAY	DOC	CW	Marb	BF	REA	API	TI
25	12.5	-1.4	87.9	130.9	0.27	6.1	21.1	21.2	13.3	46.8	0.72	-0.036	1.12	184.8	102.9

983G x Discipline flush. This bull got sick on us this fall and fell a little behind but has been catching back up. This mating offers great stayability and marbling and the daughters should be great. Full brother to lots 1, 2, 29, 45 and 46.

## LRS 867N

18

BD: 3/5/25 • ASA#: 4522117 • Tattoo: 867N  
3/4 SM 1/4 AN • Homozygous Polled • Homozygous Black

TEHAMA PATRIARCH F028

sire: CCR BEDROCK 5171J

CCR MS 2073 COWBOY 5171C

HOOK'S EAGLE 6E

dam: LRS MS EAGLE 983G

LRS MS CLASS ACT 437B



Act. BW	90
BW Ratio	ET
Adj WW	769
WW Ratio	ET
Adj YW	1334
YW Ratio	ET
WDA	3.75
ADG	3.56
Adj SC	40.1

Rank	CE	BW	WW	YW	ADG	MCE	Milk	STAY	DOC	CW	Marb	BF	REA	API	TI
80	8.4	0.9	103.1	164.1	0.38	5.0	20.9	19.3	14.9	76.9	0.58	-0.019	0.93	157.4	100.0

983G x Bedrock flush. We sold two brothers in last year's sale and I think they both made the sale report. This mating is proven and the homework is already done. The picture of this bull will sell himself. Full brother to lot 19

19

## LRS 9133N

BD: 3/11/25 • ASA#: 4522168 • Tattoo: 9133N  
3/4 SM 1/4 AN • Homozygous Polled • Homozygous Black

TEHAMA PATRIARCH F028

sire: CCR BEDROCK 5171J

CCR MS 2073 COWBOY 5171C

HOOK'S EAGLE 6E

dam: LRS MS EAGLE 983G

LRS MS CLASS ACT 437B



Act. BW	86
BW Ratio	ET
Adj WW	746
WW Ratio	ET
Adj YW	1126
YW Ratio	ET
WDA	3.27
ADG	2.41
Adj SC	35.4

Rank	CE	BW	WW	YW	ADG	MCE	Milk	STAY	DOC	CW	Marb	BF	REA	API	TI
EPDs	16.1	-3.4	85.1	128.8	0.27	9.1	20.9	19.4	14.9	46.5	0.81	-0.012	0.84	179.7	101.1
15	10	30	35	55	20	80	10	25	30	10	75	25	3	5	

Heifer Bull. 983G x Bedrock flush. Here is the 2nd embryo of this 983G x bedrock mating and this one we will recommend for heifers and then take him to the cows. Make the neighbors jealous and buy both of these bulls. Full Brother to lot 18



Lot 19

20

## LRS 866N

BD: 3/5/25 • ASA#: 4522116 • Tattoo: 866N  
PB SM • Homozygous Polled • Homozygous Black

LBRS GENESIS G69

sire: KBHR DISCIPLINE L046

BAR CK MS X38 106Z

LRS ICONIC 303C

dam: LRS MS ICONIC 997G

LRS MS ELEVATE 6021D



Act. BW	78
BW Ratio	ET
Adj WW	762
WW Ratio	ET
Adj YW	1195
YW Ratio	ET
WDA	3.42
ADG	2.73
Adj SC	41.1

Rank	CE	BW	WW	YW	ADG	MCE	Milk	STAY	DOC	CW	Marb	BF	REA	API	TI
EPDs	15.5	-1.8	87.4	126.6	0.24	8.5	25.8	23.1	14.7	46.7	0.76	0.017	0.50	192.9	103.3
10	10	25	35	60	15	30	1	20	15	2	99	99	1	3	

The lead off bull of 997G x KBHR Discipline flush. We started flushing his LRS Iconic dam because she earned it ratioing 109 on her first 5 calves at weaning and her maternal attributes. The LRS Iconic females have been getting the job done, in fact watch for sons again in next year's sale. These flush brothers might not be the biggest stoutest bulls in the sale, but they should leave tremendous females and to be honest that was one of the intentions we had not only with this mating, but in deciding to flush the 997G cow to start with. EPD excellence with his top 1% API ranking as well. Full Brother to lots 33, 34, 35, 72 and 107.



Lot 20

21

## LRS 725N

BD: 3/4/25 • ASA#: 4522082 • Tattoo: 725N  
PB SM • Homozygous Polled • Homozygous Black

ASR AMERICAN PROUD H0301

sire: LRS DUTTON 611K

LRS MS EAGLE 983G

LRS ELEVATE 213B

dam: LRS MS ELEVATE 725E

LRS MS TURNINGPOINT 544C



Act. BW	86
BW Ratio	100
Adj WW	694
WW Ratio	98
Adj YW	1170
YW Ratio	94
WDA	3.32
ADG	2.99
Adj SC	38.0

Rank	CE	BW	WW	YW	ADG	MCE	Milk	STAY	DOC	CW	Marb	BF	REA	API	TI
EPDs	9.4	-0.3	90.0	134.0	0.27	5.1	23.6	19.2	11.2	49.7	0.38	-0.065	1.38	157.7	94.9
55	25	20	25	40	65	45	15	60	10	20	60	1	20	15	

Another well built Dutton calf out of a coming 9 year old cow who has had 3 sons make the sale pens over the years.



Lot 21

22

## LRS 879N

BD: 3/29/25 • ASA#: 4522118 • Tattoo: 879N  
5/8 SM 3/8 AN • Homozygous Polled • Homozygous Black

TEHAMA PATRIARCH F028

sire: CCR ANTHEM 3355J

CCR MS 5161 COWBOY 8636F

LRS TENX EXCELLANCE 352C

dam: LRS MS EXCELLENCE 879F

LRS MS RANGEBOSS 524C



Act. BW	86
BW Ratio	100
Adj WW	795
WW Ratio	112
Adj YW	1397
YW Ratio	112
WDA	3.98
ADG	3.79
Adj SC	39.4

Rank	CE	BW	WW	YW	ADG	MCE	Milk	STAY	DOC	CW	Marb	BF	REA	API	TI
EPDs	8.7	0.9	99.1	161.1	0.39	7.8	24.3	16.0	17.4	53.6	0.51	-0.010	0.97	146.9	96.9
80	70	4	3	4	40	50	40	5	15	35	85	15	35	10	

Just an end of March baby who weaned off over 700 lbs and adjusted to almost 800 lbs which is no surprise as his dam is ratioing 108 for weaning on her first 6 calves.

\$250 SALE CREDIT

STOP BY THE RANCH AND VIEW THE BULLS  
BEFORE SALE DAY TO RECEIVE A \$250  
SALE CREDIT AT OUR 2026 BULL SALE.

# LASSLE RANCH SIMMENTALS



GRACE EXHIBITED THE GRAND CHAMPION STEER  
AT THE DAWSON COUNTY FAIR



## LRS 3126N

23

BD: 2/25/25 • ASA#: 4522389 • Tattoo: 3126N  
5/8 SM 1/4 AN 1/8 MX • Homozygous Polled • Homozygous Black

TEHAMA PATRIARCH F028

sire: CCR BEDROCK 5171J

CCR MS 2073 COWBOY 5171C

LRS FIREBALL 3021H

dam: LRS MS FIREBALL 3126L

LRS MS NIGHTRIDE 707E



Act. BW	86
BW Ratio	107
Adj WW	784
WW Ratio	110
Adj YW	1315
YW Ratio	106
WDA	3.52
ADG	3.38
Adj SC	36.6

Rank	CE	BW	WW	YW	ADG	MCE	Milk	STAY	DOC	CW	Marb	BF	REA	API	TI
EPDs	10.3	0.1	92.1	138.8	0.29	7.3	23.4	13.8	13.2	53.4	0.72	0.021	0.81	151.6	97.5
	65	55	15	20	45	45	55	65	45	15	15	99	30	25	10

You will like the looks of this Bedrock son in the pens who sports a 110 WW Ratio.

## LRS 1186N

24

BD: 3/8/25 • ASA#: 4522223 • Tattoo: 1186N  
PB SM • Homozygous Polled • Homozygous Black

ASR AMERICAN PROUD H0301

sire: LRS DUTTON 611K

LRS MS EAGLE 983G

LRS BADLANDS 401F

dam: LRS MS BADLANDS 1186J

LRS MS CLASS ACT 437B



Act. BW	84
BW Ratio	100
Adj WW	691
WW Ratio	97
Adj YW	1240
YW Ratio	100
WDA	3.42
ADG	3.46
Adj SC	38.7

Rank	CE	BW	WW	YW	ADG	MCE	Milk	STAY	DOC	CW	Marb	BF	REA	API	TI
EPDs	8.4	1.0	92.8	140.0	0.29	5.3	23.1	21.5	10.5	50.6	0.32	-0.069	1.18	157.1	93.4
	70	45	15	15	30	60	50	4	70	10	30	60	10	20	20

Dutton bull whose dam is a direct daughter on the 437B cow, so he is double bred 437B. Top 4% stayability and top 10% REA with great phenotype to boot.

## LRS 045N

25

BD: 3/6/25 • ASA#: 4522189 • Tattoo: 045N  
3/4 SM 1/4 AN • Homozygous Polled • Homozygous Black

WS PROCLAMATION E202

sire: KBHR GLOBAL J138

BAR CK MS X38 106Z

LD CAPITALIST 316

dam: LRS MS CAPITALIST 316 045H

LRS MS GRAVITY 603D



Act. BW	86
BW Ratio	100
Adj WW	661
WW Ratio	93
Adj YW	1292
YW Ratio	104
WDA	3.58
ADG	3.97
Adj SC	36.6

Rank	CE	BW	WW	YW	ADG	MCE	Milk	STAY	DOC	CW	Marb	BF	REA	API	TI
EPDs	12.9	-0.7	80.6	133.6	0.33	6.9	20.9	18.4	13.9	36.1	0.51	-0.046	0.77	153.3	88.5
	40	40	40	30	20	55	80	20	35	55	35	35	35	25	35

Global and Discipline are maternal brothers out of the famous 106Z cow at Keller's Broken Heart. Dam is sired by Capitalist 316, so I would expect great females.

## LRS 0141N

26

BD: 3/10/25 • ASA#: 4522173 • Tattoo: 0141N  
1/2 SM 1/2 AN • Homozygous Polled • Homozygous Black

GIBBS 9121G KENWORTH

sire: GIBBS KINGPIN 1140J

GIBBS 8028F FANCY 6138D

BASIN RAINMAKER 4404

dam: LRS MS RAINMAKER 0141H

LRS MS TOPGRADE 303A



Act. BW	86
BW Ratio	100
Adj WW	636
WW Ratio	93
Adj YW	1282
YW Ratio	104
WDA	3.54
ADG	4.07
Adj SC	38.3

Rank	CE	BW	WW	YW	ADG	MCE	Milk	STAY	DOC	CW	Marb	BF	REA	API	TI
EPDs	11.0	0.7	92.4	161.0	0.43	7.6	31.0	14.9	16.8	60.5	0.56	-0.025	0.47	149.4	95.4
	60	65	15	3	1	40	10	55	10	10	30	65	85	30	15

Dam traces back to the 303A Cow and she is ratioing over 100 for both WW and YW on her first 4 calves. We used Kingpin as a complete outcross sire to our program. Top 15% for both WW and YW.

27

## LRS 8008N

BD: 3/10/25 • ASA#: 4522122 • Tattoo: 8008N  
3/4 SM 1/4 AN • Homozygous Polled • Homozygous Black

TEHAMA PATRIARCH F028

sire: CCR ANTHEM 3355J

CCR MS 5161 COWBOY 8636F

HOOK'S EAGLE 6E

dam: LRS MS EAGLE 983G

LRS MS CLASS ACT 437B



Act. BW	92
BW Ratio	ET
Adj WW	775
WW Ratio	ET
Adj YW	1177
YW Ratio	ET
WDA	3.41
ADG	2.55
Adj SC	37.3

Rank	CE	BW	WW	YW	ADG	MCE	Milk	STAY	DOC	CW	Marb	BF	REA	API	TI
4.5	2.0	105.5	165.9	0.38	4.4	22.0	12.4	15.6	74.1	0.34	-0.040	1.36	125.2	94.4	
99	85	2	2	5	90	70	75	15	1	60	50	1	65	15	

Anthem x 983G flush brother who is the power bull of the pair. He will add both growth and muscle. Full Brother to lot 28.

28

## LRS 198N

BD: 3/8/25 • ASA#: 4522256 • Tattoo: 198N  
3/4 SM 1/4 AN • Homozygous Polled • Homozygous Black

TEHAMA PATRIARCH F028

sire: CCR ANTHEM 3355J

CCR MS 5161 COWBOY 8636F

HOOK'S EAGLE 6E

dam: LRS MS EAGLE 983G

LRS MS CLASS ACT 437B



Act. BW	78
BW Ratio	ET
Adj WW	643
WW Ratio	ET
Adj YW	1270
YW Ratio	ET
WDA	3.48
ADG	3.95
Adj SC	37.7

Rank	CE	BW	WW	YW	ADG	MCE	Milk	STAY	DOC	CW	Marb	BF	REA	API	TI
17.4	-3.0	79.3	123.6	0.28	9.9	22.0	23.6	13.4	39.2	0.33	-0.013	1.02	161.8	86.1	
10	15	45	45	50	10	70	1	40	50	65	75	10	15	40	

Heifer Bull. Anthem x 983G and this one is a heifer bull and is really attractive as well. He has always had a great look to him since he was a baby, and you can see his picture now it has not changed. Great heifer bull option, Top 1 % stayability, and enough punch to use on the whole herd. Full brother to lot 27



Lot 28



29

## LRS 902N

BD: 3/7/25 • ASA#: 4522132 • Tattoo: 902N  
PB SM • Homozygous Polled • Homozygous Black

LBRS GENESIS G69

sire: KBHR DISCIPLINE L046

BAR CK MS X38 106Z

HOOK'S EAGLE 6E

dam: LRS MS EAGLE 983G

LRS MS CLASS ACT 437B



Act. BW	86
BW Ratio	ET
Adj WW	716
WW Ratio	ET
Adj YW	1246
YW Ratio	ET
WDA	3.49
ADG	3.33
Adj SC	39.7

Rank	CE	BW	WW	YW	ADG	MCE	Milk	STAY	DOC	CW	Marb	BF	REA	API	TI
11.1	-0.6	89.2	134.0	0.28	7.2	21.1	21.1	13.4	70.5	0.64	-0.046	1.14	177.6	100.5	
40	20	20	25	35	25	70	5	30	1	5	85	10	4	5	

983G x Discipline Flush. These brothers got put into different feeding pens and are not all together in the catalog. This bull did not take the best picture for us. Find the ones you like and turn out sons from the most prolific and profitable cow families ever bred here at LRS. Full brother to lots 1, 2, 17, 45 and 46.



Lot 29



GRACE RECEIVED HER FFA STATE DEGREE LAST SPRING

# LASSLE RANCH SIMMENTALS

## LRS CBL 25N

30

BD: 3/16/25 • ASA#: 4581251 • Tattoo: 25N  
3/4 SM 1/4 AN • Homozygous Polled • Homozygous Black

ASR AMERICAN PROUD H0301

sire: **LRS DUTTON 611K**

LRS MS EAGLE 983G

CCR PAYDAY 0320C

dam: **CBL MS PAYDAY F588**

CBL MS UPGRADE Z342



Act. BW	84
BW Ratio	111
Adj WW	712
WW Ratio	103
Adj YW	1331
YW Ratio	110
WDA	3.70
ADG	3.89
Adj SC	39.2

Rank	CE	BW	WW	YW	ADG	MCE	Milk	STAY	DOC	CW	Marb	BF	REA	API	TI
95	5.4	1.8	87.5	126.6	0.24	2.8	22.9	18.4	16.3	61.5	0.46	-0.053	1.19	135.8	86.2
	20	85	20	40	75	99	60	20	10	45	25	25	2	50	40

Another really good LRS Dutton sired calf who came in this fall over 700 lbs. He carries all the same style and design present in all the Dutton calves. Really good bull.

## LRS 186N

31

BD: 3/6/25 • ASA#: 4522246 • Tattoo: 186N  
1/2 SM 1/2 AN • Homozygous Polled • Homozygous Black

GIBBS 9121G KENWORTH

sire: **GIBBS KINGPIN 1140J**

GIBBS 8028F FANCY 6138D

MCCONNELL ALTITUDE 3114

dam: **LRS MS ALTITUDE 066H**

LRS MS TOPGRADE 303A



Act. BW	86
BW Ratio	ET
Adj WW	585
WW Ratio	ET
Adj YW	1210
YW Ratio	ET
WDA	3.29
ADG	3.94
Adj SC	41.1

Rank	CE	BW	WW	YW	ADG	MCE	Milk	STAY	DOC	CW	Marb	BF	REA	API	TI
20	15.5	-1.8	73.6	125.6	0.33	9.0	27.6	23.1	13.0	35.2	0.62	0.015	0.38	170.1	88.1
	25	65	45	20	20	20	20	1	45	60	25	95	95	10	35

066H x Kingpin Flush. 066H is a direct daughter of 303A, the dam of LRS Top Shelf and LRS Iconic. His recip dam did not do a great job this summer, but he sure has been coming on this fall. Flush Brother to Lot 39

## LRS 2105N

32

BD: 3/14/25 • ASA#: 4522315 • Tattoo: 2105N  
5/8 SM 3/8 AN • Homozygous Polled • Homozygous Black

TEHAMA PATRIARCH F028

sire: **CCR ANTHEM 3355J**

CCR MS 5161 COWBOY 8636F

LRS FIREBALL 3021H

dam: **LRS MS BROADRANGE 2105K**

LRS MS TOP TEN 609D



Act. BW	80
BW Ratio	97
Adj WW	752
WW Ratio	101
Adj YW	1226
YW Ratio	94
WDA	3.40
ADG	3.00
Adj SC	36.1

Rank	CE	BW	WW	YW	ADG	MCE	Milk	STAY	DOC	CW	Marb	BF	REA	API	TI
10	18.2	-4.3	71.6	105.5	0.21	9.6	26.5	17.6	11.0	34.4	0.41	0.008	0.43	151.3	83.7
	4	75	80	90	15	30	25	75	60	50	90	90	90	25	50

Heifer Bull. Full Brother sold in last years sale. Young dam has done a great job on her first 2 calves.

## LRS 980N

33

BD: 3/11/25 • ASA#: 4522151 • Tattoo: 980N  
PB SM • Homozygous Polled • Homozygous Black

LBRS GENESIS G69

sire: **KBHR DISCIPLINE L046**

BAR CK MS X38 106Z

LRS ICONIC 303C

dam: **LRS MS ICONIC 997G**

LRS MS ELEVATE 6021D



Act. BW	80
BW Ratio	ET
Adj WW	674
WW Ratio	ET
Adj YW	1233
YW Ratio	ET
WDA	3.43
ADG	3.52
Adj SC	40.4

Rank	CE	BW	WW	YW	ADG	MCE	Milk	STAY	DOC	CW	Marb	BF	REA	API	TI
20	13.5	-1.6	84.9	128.4	0.27	8.0	25.8	19.2	14.7	40.0	0.49	-0.004	0.59	168.1	95.5
	30	10	30	35	40	20	30	15	20	30	15	99	95	10	15

997G x Discipline flush. This is the 2nd of these flushmates and here comes a couple in a row. This is probably the most powerful from a muscle standpoint and really awesome phenotype. This bull is one we would possibly like to get semen collected and use in our herd. Flush Brother to Lots 20, 34, 35, 72 and 107



Lot 30



Lot 31



Lot 32



Lot 33

34

## LRS 340N

BD: 3/13/25 • ASA#: 4522061 • Tattoo: 340N  
PB SM • Homozygous Polled • Homozygous Black

LBRS GENESIS G69

sire: KBHR DISCIPLINE L046

BAR CK MS X38 106Z

LRS ICONIC 303C

dam: LRS MS ICONIC 997G

LRS MS ELEVATE 6021D



Act. BW	82
BW Ratio	ET
Adj WW	650
WW Ratio	ET
Adj YW	1141
YW Ratio	ET
WDA	3.20
ADG	3.10
Adj SC	38.0

Rank	CE	BW	WW	YW	ADG	MCE	Milk	STAY	DOC	CW	Marb	BF	REA	API	TI
EPDs	12.3	0.6	92.4	139.2	0.29	6.6	25.8	22.5	16.3	61.7	0.73	-0.014	0.96	185.8	103.5
25	40	15	20	30	35	30	2	10	2	3	99	35	2	3	3

997G x Discipline flush. Like I said in Lot 20, these bulls might not blow you away in muscle and shear power - but they come from a proven pedigree on the top and bottom side, some could possibly be used on helpers, and they are gonna leave a great set of replacements. Full brother to lots 20, 33, 35, 72 and 107.



Lot 34

35

## LRS 933N

BD: 3/8/25 • ASA#: 4522141 • Tattoo: 933N  
PB SM • Homozygous Polled • Homozygous Black

LBRS GENESIS G69

sire: KBHR DISCIPLINE L046

BAR CK MS X38 106Z

LRS ICONIC 303C

dam: LRS MS ICONIC 997G

LRS MS ELEVATE 6021D



Act. BW	80
BW Ratio	ET
Adj WW	767
WW Ratio	ET
Adj YW	1200
YW Ratio	ET
WDA	3.43
ADG	2.73
Adj SC	41.2

Rank	CE	BW	WW	YW	ADG	MCE	Milk	STAY	DOC	CW	Marb	BF	REA	API	TI
EPDs	13.7	-1.0	84.2	121.5	0.23	7.3	25.8	23.2	13.7	48.9	0.64	-0.007	0.71	181.8	97.6
15	15	35	45	65	25	30	1	30	15	5	99	85	3	10	10

997G x Discipline Flush. See footnotes for Lot 34. Full Brother to lots 20, 33, 34, 72, and 107.



Lot 35

36

## LRS 802N

BD: 3/9/25 • ASA#: 4522103 • Tattoo: 802N  
PB SM • Homozygous Polled • Homozygous Black

LBRS GENESIS G69

sire: CCR THR EL DORADO 4142J

CCR MS CATALYST 4142B

NLC GEN TEN 82E

dam: LRS MS CLEO 0142H

LRS MS TOPGRADE 303A



Act. BW	86
BW Ratio	ET
Adj WW	630
WW Ratio	ET
Adj YW	1226
YW Ratio	ET
WDA	3.38
ADG	3.75
Adj SC	38.3

Rank	CE	BW	WW	YW	ADG	MCE	Milk	STAY	DOC	CW	Marb	BF	REA	API	TI
EPDs	9.6	1.8	92.4	148.7	0.35	4.2	24.3	15.3	14.4	62.7	0.68	-0.040	0.62	164.2	100.4
55	65	15	10	10	80	40	55	20	2	4	95	95	15	10	10

0142H x Eldorado flush. 3 Full Brothers right in a row. Their Dam, 0142H, was the dam of our two top selling bulls in the 2025 sale. Those Ranger sons sold to Troy Wheeler and CK Cattle/ST Genetics. These 3 bulls have really been coming on since we got them weaned. Great proven cow, who we unfortunately lost last winter. Full Brother to lots 37 and 38.



Lot 36

37

## LRS 811N

BD: 3/14/25 • ASA#: 4522105 • Tattoo: 811N  
PB SM • Homozygous Polled • Homozygous Black

LBRS GENESIS G69

sire: CCR THR EL DORADO 4142J

CCR MS CATALYST 4142B

NLC GEN TEN 82E

dam: LRS MS CLEO 0142H

LRS MS TOPGRADE 303A

Act. BW	86
BW Ratio	ET
Adj WW	599
WW Ratio	ET
Adj YW	1217
YW Ratio	ET
WDA	3.35
ADG	3.89
Adj SC	39.6

Rank	CE	BW	WW	YW	ADG	MCE	Milk	STAY	DOC	CW	Marb	BF	REA	API	TI
EPDs	9.1	0.0	70.6	107.4	0.23	4.6	24.3	19.1	10.9	53.3	0.57	-0.043	0.62	158.1	86.3
60	30	85	75	65	75	40	15	65	10	10	85	95	20	35	35

0142H x Eldorado flush. See footnote for Lot 36. Full brothers to lot 36, and 38.

38

## LRS 927N

BD: 3/11/25 • ASA#: 4522139 • Tattoo: 927N  
PB SM • Homozygous Polled • Homozygous Black

LBRS GENESIS G69

sire: CCR THR EL DORADO 4142J

CCR MS CATALYST 4142B

NLC GEN TEN 82E

dam: LRS MS CLEO 0142H

LRS MS TOPGRADE 303A



Act. BW	90
BW Ratio	ET
Adj WW	552
WW Ratio	ET
Adj YW	1119
YW Ratio	ET
WDA	3.06
ADG	3.57
Adj SC	38.9

Rank	CE	BW	WW	YW	ADG	MCE	Milk	STAY	DOC	CW	Marb	BF	REA	API	TI
EPDs	7.5	0.9	85.5	132.2	0.29	4.6	24.3	17.6	13.4	48.3	0.52	-0.040	0.65	155.0	92.8
75	45	30	25	30	75	40	30	30	15	10	95	95	20	20	20

0142H x Eldorado flush. See footnote for Lot 36. Full brothers to lot 37, and 38.

# LASSLE RANCH SIMMENTALS

## LRS 813N

39

BD: 3/8/25 • ASA#: 4522106 • Tattoo: 813N  
1/2 SM 1/2 AN • Homozygous Polled • Homozygous Black

GIBBS 9121G KENWORTH

sire: GIBBS KINGPIN 1140J

GIBBS 8028F FANCY 6138D

MCCONNELL ALTITUDE 3114

dam: LRS MS ALTITUDE 066H

LRS MS TOPGRADE 303A



Act. BW	84
BW Ratio	ET
Adj WW	643
WW Ratio	ET
Adj YW	1253
YW Ratio	ET
WDA	3.45
ADG	3.84
Adj SC	42.7

Rank	CE	BW	WW	YW	ADG	MCE	Milk	STAY	DOC	CW	Marb	BF	REA	API	TI
16.0	-1.2	82.0	142.0	0.38	8.3	27.6	18.6	15.9	46.2	0.85	0.005	0.32	177.3	98.3	
15	35	40	20	5	30	20	15	15	30	10	90	95	4	10	

066H x Kingpin flush. He and his brother are fault free cattle that will keep you out of the ditch. Not extreme in any way, either in person or on paper, they are good bulls and come from a proven tribe of cows that work here in our operation. Full brother to lot 31.

Lot 39

## LRS 250N

40

BD: 3/13/25 • ASA#: 4522286 • Tattoo: 250N  
1/2 SM 1/2 AN • Homozygous Polled • Homozygous Black

KG JUSTIFIED 3023

sire: BOYD JUSTIFICATION

BOYD ABIGALE 9056

LRS FALCON 442G

dam: LRS MS REMI 250K

LRS MS TOPGRADE 303A



Act. BW	84
BW Ratio	102
Adj WW	678
WW Ratio	96
Adj YW	1291
YW Ratio	103
WDA	3.51
ADG	3.89
Adj SC	42.0

Rank	CE	BW	WW	YW	ADG	MCE	Milk	STAY	DOC	CW	Marb	BF	REA	API	TI
17.3	-2.8	76.2	123.0	0.29	6.8	22.9	23.1	15.7	37.8	0.44	-0.057	0.97	166.1	87.4	
10	15	60	50	45	55	60	1	15	50	45	25	15	10	35	

Heifer Bull. Really nice heifer bull sired by the angus bull Boyd Justification and out of a really pretty sound structured LRS Falcon daughter who is a great young cow.

Lot 40

## LRS 1107N

41

BD: 3/5/25 • ASA#: 4522259 • Tattoo: 1107N  
5/8 SM 3/8 AN • Homozygous Polled • Homozygous Black

LBR8 GENESIS G69

sire: CCR THR EL DORADO 4142J

CCR MS CATALYST 4142B

LRS BADLANDS 401F

dam: LRS MS BADLANDS 1107J

LRS MS ALTITUDE 886F



Act. BW	84
BW Ratio	99
Adj WW	677
WW Ratio	95
Adj YW	1263
YW Ratio	101
WDA	3.47
ADG	3.69
Adj SC	37.1

Rank	CE	BW	WW	YW	ADG	MCE	Milk	STAY	DOC	CW	Marb	BF	REA	API	TI
12.2	-1.2	74.1	113.0	0.24	5.5	22.7	14.0	15.2	38.3	0.98	-0.013	0.53	164.6	95.4	
45	35	65	65	75	75	65	60	20	50	3	75	80	15	15	

Square made, eye catching Eldorado son with the G+ stamp.

Lot 41

## LRS 1183N

42

BD: 3/12/25 • ASA#: 4522222 • Tattoo: 1183N  
PB SM • Homozygous Polled • Homozygous Black

ASR AMERICAN PROUD H0301

sire: LRS DUTTON 611K

LRS MS EAGLE 983G

WS PROCLAMATION E202

dam: LRS MS PROCLAMATION 1183J

LRS MS ELEVATE 6033D



Act. BW	84
BW Ratio	100
Adj WW	710
WW Ratio	100
Adj YW	1230
YW Ratio	99
WDA	3.41
ADG	3.27
Adj SC	37.0

Rank	CE	BW	WW	YW	ADG	MCE	Milk	STAY	DOC	CW	Marb	BF	REA	API	TI
13.2	0.7	83.9	123.4	0.25	7.6	23.1	18.3	11.1	42.9	0.52	-0.057	0.89	163.6	93.4	
20	40	35	40	50	20	50	25	60	25	10	75	50	15	20	

Dutton out of a proclamation bred cow who was over 700 lbs at weaning.

Lot 42

43

## LRS 1165N

BD: 3/23/25 • ASA#: 4522268 • Tattoo: 1165N  
1/2 SM 1/2 AN • Homozygous Polled • Homozygous Black

MUSGRAVE 316 STUNNER

sire: LRS CROSSFIT 4306J

LRS MS CLASS ACT 437B

LRS 7122G

dam: CBL MS FAITH 1165J

CBL MS. TOP GRADE A163



Act. BW	86
BW Ratio	101
Adj WW	767
WW Ratio	108
Adj YW	1281
YW Ratio	100
WDA	3.61
ADG	3.24
Adj SC	39.5

Rank	CE	BW	WW	YW	ADG	MCE	Milk	STAY	DOC	CW	Marb	BF	REA	API	TI
11.5	-0.9	83.4	130.8	0.30	7.4	29.7	20.9	13.6	40.6	0.63	-0.007	0.57	162.2	92.7	
55	40	35	35	35	45	10	4	40	45	20	85	75	15	20	

Harper's bull. She named him Felix. His dam has been doing a great job for Harper and always brings in a big calf. Sired by LRS Crossfit, who was a top seller to Cow Camp Ranch a few years back. 108 WW Ratio for this rascal and his dam is ratioing 108 for WW to match on her progeny.



44

## LRS CBL 12N

BD: 3/13/25 • ASA#: 4581252 • Tattoo: 12N  
1/2 SM 1/2 AN • Homozygous Polled • Homozygous Black

EGL FIRESTEEL 103F

sire: CCR FIRE POWER 8081J

CCR MS COMMAND 8081F

LRS ELEVATE 213B

dam: CBL MS ELEVATE F238

CBL MS FULL POWER C45

Act. BW	72
BW Ratio	95
Adj WW	679
WW Ratio	98
Adj YW	1181
YW Ratio	97
WDA	3.36
ADG	3.16
Adj SC	37.5

Rank	CE	BW	WW	YW	ADG	MCE	Milk	STAY	DOC	CW	Marb	BF	REA	API	TI
13.2	-0.8	80.3	135.8	0.35	5.9	28.0	11.5	13.1	36.3	0.74	-0.020	0.60	152.7	94.6	
35	40	45	25	15	70	20	80	45	55	15	75	70	25	15	

CCR Firepower son who was just 71 lbs at birth and cranked it up to just shy of 700 lbs at weaning. Dam has put multiple other bulls through the sale and is ratioing 105 weaning and 108 at yearling.



GRACE EXHIBITED THE GRAND CHAMPION OWNED STEER AT THE 2025 AJSA WESTERN REGIONAL CLASSIC

45

## LRS 019N

BD: 3/3/25 • ASA#: 4522179 • Tattoo: 019N  
PB SM • Homozygous Polled • Homozygous Black

LBRS GENESIS G69

sire: KBHR DISCIPLINE L046

BAR CK MS X38 106Z

HOOK'S EAGLE 6E

dam: LRS MS EAGLE 983G

LRS MS CLASS ACT 437B



Act. BW	90
BW Ratio	ET
Adj WW	642
WW Ratio	ET
Adj YW	1194
YW Ratio	ET
WDA	3.30
ADG	3.47
Adj SC	37.0

Rank	CE	BW	WW	YW	ADG	MCE	Milk	STAY	DOC	CW	Marb	BF	REA	API	TI
8.2	-0.8	91.5	137.2	0.29	4.7	21.1	18.2	14.1	57.3	0.52	-0.058	1.00	162.9	98.8	
70	20	15	20	30	70	70	25	25	4	10	75	30	15	10	

983G x Discipline flush Brother. These brothers got put into different feeding pens and are not all together in the catalog in sale. Find the ones you like and turn out sons from the most prolific and profitable cow families ever bred here at LRS. Full brother to Lot 1, 2, 17, 29, and 46



46

## LRS 929N

BD: 3/10/25 • ASA#: 4522140 • Tattoo: 929N  
PB SM • Homozygous Polled • Homozygous Black

LBRS GENESIS G69

sire: KBHR DISCIPLINE L046

BAR CK MS X38 106Z

HOOK'S EAGLE 6E

dam: LRS MS EAGLE 983G

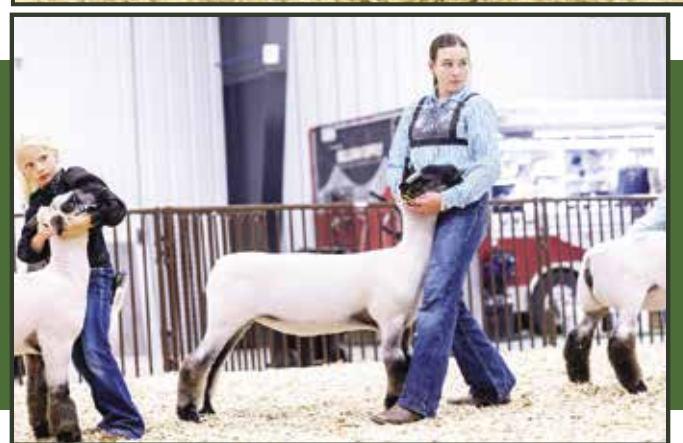
LRS MS CLASS ACT 437B



Act. BW	82
BW Ratio	ET
Adj WW	580
WW Ratio	ET
Adj YW	1206
YW Ratio	ET
WDA	3.29
ADG	3.94
Adj SC	40.3

Rank	CE	BW	WW	YW	ADG	MCE	Milk	STAY	DOC	CW	Marb	BF	REA	API	TI
12.8	-0.6	85.6	134.8	0.31	5.8	21.1	20.7	17.9	48.1	0.62	-0.034	0.86	177.3	98.2	
25	20	30	25	20	50	70	10	2	15	10	95	55	4	10	

983G x Discipline flush Brother. These brothers got put into different feeding pens, and are not all together in the catalog in sale. Find the ones you like and turn out sons from the most prolific and profitable cow families ever bred here at LRS. Full brother to Lot 1, 2, 17, 29, and 45.



HARPER TOOK ON A LAMB PROJECT THIS YEAR AND LEARNED A LOT

# LASSLE RANCH SIMMENTALS

## LRS CBL 35N

47

BD: 3/18/25 • ASA#: 4581250 • Tattoo: 35N  
1/2 SM 1/2 AN • Homozygous Polled • Homozygous Black

EGL FIRESTEEL 103F

sire: CCR FIRE POWER 8081J

CCR MS COMMAND 8081F

HOOK'S BALTIC 17B

dam: CBL MS BALTIC G349

CBA MS CEDAR RIDGE B34



Act. BW	72
BW Ratio	95
Adj WW	654
WW Ratio	94
Adj YW	1113
YW Ratio	92
WDA	3.19
ADG	2.89
Adj SC	38.8

Rank	CE	BW	WW	YW	ADG	MCE	Milk	STAY	DOC	CW	Marb	BF	REA	API	TI
14.6	-2.0	64.8	111.1	0.29	5.3	22.6	17.4	12.4	35.0	0.49	-0.014	0.33	147.5	79.4	
25	20	90	70	45	80	65	25	55	60	40	75	95	30	65	

CCR Firepower 1/2 blood with a great look to him. Dam has had multiple bulls in previous sales and carries the G+ stamp.

## LRS 338N

48

BD: 2/25/25 • ASA#: 4522348 • Tattoo: 338N  
PB SM • Homozygous Polled • Homozygous Black

LBR5 GENESIS G69

sire: KBHR DISCIPLINE L046

BAR CK MS X38 106Z

ASR AMERICAN PROUD H0301

dam: LRS MS AMERICAN PROUD 338L

LRS MS ICONIC 997G



Act. BW	86
BW Ratio	106
Adj WW	751
WW Ratio	105
Adj YW	1217
YW Ratio	98
WDA	3.25
ADG	2.95
Adj SC	39.1

Rank	CE	BW	WW	YW	ADG	MCE	Milk	STAY	DOC	CW	Marb	BF	REA	API	TI
10.1	-1.3	90.1	132.6	0.27	7.3	26.6	15.9	16.1	53.4	0.60	-0.020	0.79	163.7	100.3	
50	15	20	25	40	25	25	45	10	10	10	99	70	15	10	

Dam is a first calf heifer who got it done in year one with his 750 lbs adjusted WW. Her dam is the 997G cow who has the big flush of discipline bull calves in the sale.

## LRS 985N

49

BD: 3/6/25 • ASA#: 4522154 • Tattoo: 985N  
3/4 SM 1/4 AN • Homozygous Polled • Homozygous Black

WS PROCLAMATION E202

sire: KBHR GLOBAL J138

BAR CK MS X38 106Z

LRS ICONIC 303C

dam: LRS MS ICONIC 985G

LRS MS RANGE BOSS 662D



Act. BW	90
BW Ratio	105
Adj WW	666
WW Ratio	94
Adj YW	1193
YW Ratio	96
WDA	3.36
ADG	3.32
Adj SC	38.1

Rank	CE	BW	WW	YW	ADG	MCE	Milk	STAY	DOC	CW	Marb	BF	REA	API	TI
10.9	0.5	82.2	123.5	0.26	5.8	19.2	19.3	12.7	34.9	0.46	-0.045	0.88	146.1	85.7	
60	65	35	45	60	70	90	15	50	60	45	35	20	35	40	

His Iconic sired dam always brings in a great calf. She has had 3 other bulls make the sale, and they always turn it on as she is ratioing 107 for YW.

## LRS 365N

51

BD: 1/17/25 • ASA#: 4522360 • Tattoo: 365N  
5/8 SM 3/8 AN • Homozygous Polled • Heterozygous Black

BRIDLE BIT ECLIPSE E744

sire: BRIDLE BIT ALL TERRAIN L3110

BRIDLE BIT MISS B452

LRS FIREBALL 3021H

dam: LRS MS JJ 365L

LRS MS JOY 661D



Act. BW	74
BW Ratio	93
Adj WW	776
WW Ratio	109
Adj YW	1340
YW Ratio	108
WDA	3.47
ADG	3.57
Adj SC	32.0

Rank	CE	BW	WW	YW	ADG	MCE	Milk	STAY	DOC	CW	Marb	BF	REA	API	TI
11.1	0.6	95.8	149.3	0.33	7.6	31.9	14.4	17.0	75.7	0.52	-0.068	0.93	145.6	96.4	
55	65	10	10	20	40	4	60	10	1	35	15	15	35	15	

Heterozygous Black. Harper's bull named "Fred" he might be Heterozygous Black, but he is good. Out of one of Harper's first calf heifers, she earns high praise for bringing in this brute with his 109 WW Ratio. If you can handle the red gene - you can handle him.



Lot 47



Lot 48



Lot 49

## LRS 133N

50

BD: 3/4/25 • ASA#: 4522231 • Tattoo: 133N  
1/2 SM 1/2 AN • Homozygous Polled • Homozygous Black

TEHAMA PATRIARCH F028

sire: CCR ANTHEM 3355J

CCR MS 5161 COWBOY 8636F

TEHAMA TAHOE B767

dam: LRS MS TAHOE 133J

LRS MS TOPGRADE 303A



Act. BW	84
BW Ratio	99
Adj WW	650
WW Ratio	91
Adj YW	1260
YW Ratio	99
WDA	3.45
ADG	3.84
Adj SC	38.0

Rank	CE	BW	WW	YW	ADG	MCE	Milk	STAY	DOC	CW	Marb	BF	REA	API	TI
13.0	-1.0	79.0	123.5	0.28	10.0	25.0	14.9	13.2	44.9	0.65	-0.047	0.90	152.5	91.3	
40	35	50	45	50	10	40	55	45	35	20	35	20	25	25	

Really balanced maternal appearing Anthem son who is long and clean fronted.

52

## LRS 1116N

BD: 3/8/25 • ASA#: 4522263 • Tattoo: 1116N  
5/8 SM 3/8 AN • Homozygous Polled • Homozygous Black

GIBBS 9121G KENWORTH

sire: GIBBS KINGPIN 1140J

GIBBS 8028F FANCY 6138D

HOOK'S EAGLE 6E

dam: LRS MS EAGLE 1116J

LRS MS ICONIC 764E



Act. BW	82
BW Ratio	97
Adj WW	786
WW Ratio	111
Adj YW	1371
YW Ratio	110
WDA	3.82
ADG	3.69
Adj SC	40.2

Rank	CE	BW	WW	YW	ADG	MCE	Milk	STAY	DOC	CW	Marb	BF	REA	API	TI
52	15.0	-3.1	91.4	146.8	0.35	9.5	29.6	15.9	16.3	41.9	0.57	-0.001	0.80	161.8	99.8
20	20	10	15	15	15	10	45	10	40	30	85		35	15	10

786 lbs off the cow to ratio 111 and his dam is ratioing 108 for weaning on her first 3 calves.

54

## LRS 0138N

BD: 3/9/25 • ASA#: 4522174 • Tattoo: 0138N  
5/8 SM 3/8 AN • Homozygous Polled • Homozygous Black

LBRS GENESIS G69

sire: CCR THR EL DORADO 4142J

CCR MS CATALYST 4142B

LRS ICONIC 303C

dam: LRS MS ICONIC 0138H

LRS MS DUAL FOCUS 213Z



Act. BW	88
BW Ratio	102
Adj WW	900
WW Ratio	127
Adj YW	1359
YW Ratio	109
WDA	3.93
ADG	2.90
Adj SC	41.8

Rank	CE	BW	WW	YW	ADG	MCE	Milk	STAY	DOC	CW	Marb	BF	REA	API	TI
54	7.5	1.2	97.8	150.5	0.33	6.3	26.3	16.0	13.8	64.3	0.58	-0.051	0.86	146.5	97.0
85	85	75	5	10	20	65	30	40	35	4	25	25	25	35	10

Highest adjusted WW in the sale at 900 lbs.

55

## LRS 327N

BD: 2/20/25 • ASA#: 4522344 • Tattoo: 327N  
1/2 SM 1/2 AN • Heterozygous Polled • Homozygous Black

KG JUSTIFIED 3023

sire: BOYD JUSTIFICATION

BOYD ABIGALE 9056

ASR AMERICAN PROUD H0301

dam: LRS MS AMERICAN PROUD 327L

LRS MS BOISE 834F



Act. BW	82
BW Ratio	101
Adj WW	809
WW Ratio	113
Adj YW	1378
YW Ratio	111
WDA	3.67
ADG	3.62
Adj SC	40.4

Rank	CE	BW	WW	YW	ADG	MCE	Milk	STAY	DOC	CW	Marb	BF	REA	API	TI
55	17.0	-2.3	96.3	148.8	0.33	6.5	26.8	19.1	16.5	55.2	0.53	-0.011	1.19	168.3	100.7
10	10	20	10	10	20	60	25	15	10	15	35	75	2	10	10

Heterozygous Polled. Over 800 lbs Adjusted weaning weight out of a first calf heifer.

57

## LRS 345N

BD: 2/20/25 • ASA#: 4522351 • Tattoo: 345N  
3/4 SM 1/4 AN • Homozygous Polled • Homozygous Black

WS PROCLAMATION E202

sire: KBHR GLOBAL J138

BAR CK MS X38 106Z

DB ICONIC G95

dam: LRS MS ICONIC 345L

LRS MS CLEO 0142H



Act. BW	86
BW Ratio	106
Adj WW	737
WW Ratio	103
Adj YW	1330
YW Ratio	107
WDA	3.50
ADG	3.76
Adj SC	40.4

Rank	CE	BW	WW	YW	ADG	MCE	Milk	STAY	DOC	CW	Marb	BF	REA	API	TI
57	12.1	-0.6	88.0	141.8	0.34	6.7	24.4	19.2	17.9	37.7	0.68	0.006	0.50	164.2	96.1
45	45	45	20	20	15	55	45	15	4	55	15	90	85	15	15

His dam is a flush sister to the 356L cow who is the dam of the lot 8 bull. She also is off to great start with this Global bull calf.

53

## LRS 258N

BD: 3/16/25 • ASA#: 4522287 • Tattoo: 258N  
3/4 SM 1/4 AN • Homozygous Polled • Homozygous Black

GIBBS 7382E BROAD RANGE

sire: LRS RANGER 445K

LRS Ms Eagle 983G

LRS TOPSHELF 902F

dam: LRS MS QUEEN 258K

LRS Ms Bailey 814F



Act. BW	78
BW Ratio	94
Adj WW	756
WW Ratio	107
Adj YW	1335
YW Ratio	106
WDA	3.66
ADG	3.66
Adj SC	38.7

Rank	CE	BW	WW	YW	ADG	MCE	Milk	STAY	DOC	CW	Marb	BF	REA	API	TI
53	14.0	-1.0	98.7	157.8	0.37	6.3	22.1	16.4	17.1	55.0	0.54	-0.020	1.07	159.3	100.4
30	30	35	4	4	10	65	70	35	10	15	30	75	5	20	10

Ranger son out of one of Grace's cows. Over 750 lbs at weaning and top 10 % for both WW and YW EPDs.



56

## LRS 341N

BD: 2/21/25 • ASA#: 4522349 • Tattoo: 341N  
1/2 SM 1/2 AN • Heterozygous Polled • Homozygous Black

TEHAMA PATRIARCH F028

sire: CCR ANTHEM 3355J

CCR MS 5161 COWBOY 8636F

LRS CROSSFIT 4306J

dam: LRS MS CROSSFIT 341L

LRS MS RESOURCE 766E



Act. BW	82
BW Ratio	101
Adj WW	785
WW Ratio	110
Adj YW	1302
YW Ratio	105
WDA	3.48
ADG	3.29
Adj SC	35.9

Rank	CE	BW	WW	YW	ADG	MCE	Milk	STAY	DOC	CW	Marb	BF	REA	API	TI
56	11.9	0.1	94.4	151.4	0.36	10.1	29.3	19.1	15.8	64.5	0.50	0.020	1.13	155.1	95.1
50	50	55	10	10	10	10	15	15	15	4	35	99	3	20	15

Heterozygous Polled. Crossfit sired first calf heifer did a great job raising this one with his 110 WW Ratio.

58

## LRS 1173N

BD: 3/1/25 • ASA#: 4522219 • Tattoo: 1173N  
PB SM • Homozygous Polled • Homozygous Black

WS PROCLAMATION E202

sire: KBHR GLOBAL J138

BAR CK MS X38 106Z

ASR AMERICAN PROUD H0301

dam: LRS MS AMERICAN PROUD 254K

LRS MS EAGLE 983G



Act. BW	82
BW Ratio	ET
Adj WW	670
WW Ratio	ET
Adj YW	1193
YW Ratio	ET
WDA	3.31
ADG	3.29
Adj SC	35.9

Rank	CE	BW	WW	YW	ADG	MCE	Milk	STAY	DOC	CW	Marb	BF	REA	API	TI
58	11.1	-0.7	97.8	147.7	0.31	6.6	23.5	18.7	15.0	51.6	0.28	-0.078	1.11	157.5	97.8
40	40	20	10	10	20	35	50	20	15	10	35	45	15	20	10

254K x Global flush. 2 of these bulls in the sale. 254K, the donor dam, is a flush sister to LRS Dutton and has a great udder and is extremely sound. We have 5 sisters in the replacement pen. Full brother to lot 73

# LASSLE RANCH SIMMENTALS

## LRS 5118N

59

BD: 3/4/25 • ASA#: 4522064 • Tattoo: 5118N  
1/2 SM 1/2 AN • Homozygous Polled • Homozygous Black

G A R BIG STEP K715

sire: EZAR STEP UP 9178

BASIN LUCY 4261

LRS CLASS ACT 606Z

dam: LRS MS CLASS ACT 5118C

LRS MS OLIE 078X



Act. BW	86
BW Ratio	100
Adj WW	729
WW Ratio	99
Adj YW	1278
YW Ratio	95
WDA	3.59
ADG	3.48
Adj SC	39.5

Rank	CE	BW	WW	YW	ADG	MCE	Milk	STAY	DOC	CW	Marb	BF	REA	API	TI
45	12.4	0.5	79.1	125.4	0.29	8.8	22.8	21.3	13.9	40.4	0.72	-0.017	0.85	165.8	90.8

Dam is a full sister to the old 437B cow. She did a great job again this year and will be 11 this coming spring. True F1 half blood sired by the Angus bull Step Up.

## LRS 1177N

61

BD: 3/5/25 • ASA#: 4522215 • Tattoo: 1177N  
1/2 SM 1/2 AN • Homozygous Polled • Homozygous Black

KG JUSTIFIED 3023

sire: BOYD JUSTIFICATION

BOYD ABIGALE 9056

LRS BADLANDS 401F

dam: LRS MS BADLANDS 1177J

LRS MS ELEVATE 6018D



Act. BW	86
BW Ratio	101
Adj WW	679
WW Ratio	96
Adj YW	1135
YW Ratio	91
WDA	3.20
ADG	2.90
Adj SC	39.6

Rank	CE	BW	WW	YW	ADG	MCE	Milk	STAY	DOC	CW	Marb	BF	REA	API	TI
25	14.6	-1.0	82.9	122.6	0.25	4.9	24.0	17.0	13.3	37.9	0.69	-0.035	0.85	161.1	94.2

Deep sided, square made and attractive describes this Justification son.

## LRS 385N

63

BD: 2/17/25 • ASA#: 4522372 • Tattoo: 385N  
PB SM • Homozygous Polled • Homozygous Black

WS PROCLAMATION E202

sire: KBHR GLOBAL J138

BAR CK MS X38 106Z

ASR AMERICAN PROUD H0301

dam: LRS MS AMERICAN PROUD 385L

LRS MS EAGLE 054H



Act. BW	80
BW Ratio	100
Adj WW	783
WW Ratio	110
Adj YW	1395
YW Ratio	113
WDA	3.62
ADG	3.86
Adj SC	39.7

Rank	CE	BW	WW	YW	ADG	MCE	Milk	STAY	DOC	CW	Marb	BF	REA	API	TI
20	13.3	0.5	100.2	162.1	0.39	9.2	25.0	22.4	18.4	45.2	0.48	-0.068	0.89	179.2	103.6

The first calf heifers did an outstanding job this year and here is yet another one who really did a bang up job with her calf. Just shy of 800 lbs this fall to ratio 110

## LRS 1101N

65

BD: 3/24/25 • ASA#: 4522257 • Tattoo: 1101N  
1/2 SM 1/2 AN • Homozygous Polled • Homozygous Black

TEHAMA PATRIARCH F028

sire: CCR ANTHEM 3355J

CCR MS 5161 COWBOY 8636F

MUSGRAVE 316 STUNNER

dam: LRS MS STUNNER 1101J

LRS MS CLASS ACT 437B



Act. BW	96
BW Ratio	113
Adj WW	750
WW Ratio	105
Adj YW	1353
YW Ratio	106
WDA	3.80
ADG	3.80
Adj SC	36.6

Rank	CE	BW	WW	YW	ADG	MCE	Milk	STAY	DOC	CW	Marb	BF	REA	API	TI
85	7.8	3.3	88.9	142.8	0.34	3.9	26.3	17.3	10.5	57.7	0.66	-0.012	1.04	147.5	91.3

Dam is a full sister to LRS Crossfit. Best suited for mature cows only.

## LRS 3158N

60

BD: 2/1/25 • ASA#: 4522399 • Tattoo: 3158N  
5/8 SM 3/8 AN • Homozygous Polled • Homozygous Black

BRIDLE BIT ECLIPSE E744

sire: BRIDLE BIT ALL TERRAIN L3110

Bridle Bit Miss B452

CCR VARSITY 4112H

dam: LRS MS RHEA 3158L

LRS Ms Bleu 034H



Act. BW	74
BW Ratio	93
Adj WW	627
WW Ratio	88
Adj YW	1168
YW Ratio	94
WDA	2.94
ADG	3.43
Adj SC	33.8

Rank	CE	BW	WW	YW	ADG	MCE	Milk	STAY	DOC	CW	Marb	BF	REA	API	TI
20	15.7	-2.3	68.5	107.9	0.25	9.0	24.1	20.4	16.9	40.8	0.48	-0.031	0.51	154.9	81.8

Heifer bull. All Terrain was our pick out of the Bridle Bit sale a few years ago to use on Heifers. Great heifer bull option and comes from a really great line of proven maternal cows.

## LRS 806N

62

BD: 3/14/25 • ASA#: 4522104 • Tattoo: 806N  
3/4 SM 1/4 AN • Homozygous Polled • Homozygous Black

ASR AMERICAN PROUD H0301

sire: LRS DUTTON 611K

LRS MS EAGLE 983G

SCHIEFELBEIN EFFECTIVE 61

dam: LRS MS EFFECTIVE 806F

LRS MS ELEVATE 6024D



Act. BW	92
BW Ratio	107
Adj WW	783
WW Ratio	110
Adj YW	1302
YW Ratio	105
WDA	3.74
ADG	3.27
Adj SC	40.6

Rank	CE	BW	WW	YW	ADG	MCE	Milk	STAY	DOC	CW	Marb	BF	REA	API	TI
55	11.2	-0.6	86.0	127.8	0.26	6.8	23.9	16.5	16.8	51.2	0.61	-0.038	0.89	151.6	92.8

Larger framed Dutton calf who came in off the cow at almost 800 lbs.

## LRS 1109N

64

BD: 3/4/25 • ASA#: 4522260 • Tattoo: 1109N  
5/8 SM 3/8 AN • Homozygous Polled • Homozygous Black

LBRS GENESIS G69

sire: CCR THR EL DORADO 4142J

CCR MS CATALYST 4142B

LRS BADLANDS 401F

dam: LRS MS BADLANDS 1109J

LRS MS EXCELLENCE 879F



Act. BW	90
BW Ratio	107
Adj WW	717
WW Ratio	101
Adj YW	1318
YW Ratio	106
WDA	3.62
ADG	3.79
Adj SC	39.0

Rank	CE	BW	WW	YW	ADG	MCE	Milk	STAY	DOC	CW	Marb	BF	REA	API	TI
60	10.6	0.6	86.9	123.2	0.23	6.1	23.3	21.7	14.5	45.1	0.97	0.004	0.58	177.0	99.6

Check out his great stayability and API ranking. We have quite a few of these LRS Badlands daughters in the cowherd doing a great job.

## LRS 299K

66

BD: 3/16/25 • ASA#: 4522311 • Tattoo: 299N  
1/2 SM 1/2 AN • Homozygous Polled • Homozygous Black

KG JUSTIFIED 3023

sire: BOYD JUSTIFICATION

BOYD ABIGALE 9056

ASR AMERICAN PROUD H0301

dam: LRS MS AMERICAN PROUD 299K

LRS MS ELEVATE 869F



Act. BW	90
BW Ratio	109
Adj WW	792
WW Ratio	106
Adj YW	1431
YW Ratio	110
WDA	3.92
ADG	4.05
Adj SC	40.7

Rank	CE	BW	WW	YW	ADG	MCE	Milk	STAY	DOC	CW	Marb	BF	REA	API	TI
60	10.6	-0.1	93.8	144.7	0.32	5.3	24.2	16.6	15.9	51.8	0.47	-0.034	0.97	146.7	93.9

Nice Boyd Justification son who weaned this fall well over 50% of his dam's weight.

67

## LRS 104N

BD: 3/3/25 • ASA#: 4522224 • Tattoo: 104N  
1/2 SM 1/2 AN • Homozygous Polled • Homozygous Black

TEHAMA PATRIARCH F028

sire: CCR ANTHEM 3355J

CCR MS 5161 COWBOY 8636F

TJ FLAT IRON 259G

dam: LRS MS FLAT IRON 104J

LRS MS TOP TEN 934G



Act. BW	86
BW Ratio	101
Adj WW	659
WW Ratio	93
Adj YW	1254
YW Ratio	98
WDA	3.43
ADG	3.75
Adj SC	39.0

Rank	CE	BW	WW	YW	ADG	MCE	Milk	STAY	DOC	CW	Marb	BF	REA	API	TI
EPDs	14.1	-0.8	81.5	126.1	0.28	8.6	25.7	19.5	9.1	48.2	0.44	0.007	0.81	151.3	86.7
30	40	40	40	50	25	35	10	90	25	45	90	30	25	40	

His Dam's first calf sold through the sale and her 2024 heifer calf is in the bred heifer replacement group.

69

## LRS CBL 10N

BD: 3/11/25 • ASA#: 4581241 • Tattoo: 10N  
1/2 SM 1/2 AN • Homozygous Polled • Homozygous Black

EGL FIRESTEEL 103F

sire: CCR FIRE POWER 8081J

CCR MS COMMAND 8081F

LRS TOPSHELF 902F

dam: CBL MS J131

CBL MS T 10 E67



Act. BW	74
BW Ratio	99
Adj WW	721
WW Ratio	104
Adj YW	1196
YW Ratio	98
WDA	3.37
ADG	3.00
Adj SC	37.4

Rank	CE	BW	WW	YW	ADG	MCE	Milk	STAY	DOC	CW	Marb	BF	REA	API	TI
EPDs	12.5	-0.2	89.1	141.7	0.33	6.1	22.0	17.3	13.7	52.6	0.66	-0.031	0.57	159.4	95.7
45	50	20	20	20	65	70	30	40	20	20	50	75	20	15	

Firepower is another bull who adds payweight to his calves. This one was over 700 lbs this fall and ratioed 104. his Dam's first 2 calves were retained and are in the herd.

71

## LRS 270N

BD: 3/16/25 • ASA#: 4522298 • Tattoo: 270N  
3/4 SM 1/4 AN • Homozygous Polled • Homozygous Black

LBRS GENESIS G69

sire: KBHR DISCIPLINE L046

BAR CK MS X38 106Z

HOOK'S EAGLE 6E

dam: LRS MS EAGLE 270K

LRS MS CAPITALIST 884F



Act. BW	84
BW Ratio	102
Adj WW	784
WW Ratio	111
Adj YW	1223
YW Ratio	97
WDA	3.42
ADG	2.78
Adj SC	36.7

Rank	CE	BW	WW	YW	ADG	MCE	Milk	STAY	DOC	CW	Marb	BF	REA	API	TI
EPDs	12.2	-0.2	97.1	148.3	0.32	5.5	23.5	23.0	19.7	41.6	0.75	-0.014	0.50	177.2	102.3
45	50	10	10	25	75	55	1	1	40	10	75	85	4	4	

Her first bull sold through the sale last year and she puts another one on display. His Granddam, the 884F cow, is a cow that has a lot of performance, so he comes by his 111 WW ratio naturally.

72

## LRS 741N

BD: 3/4/25 • ASA#: 4522088 • Tattoo: 741N  
PB SM • Homozygous Polled • Homozygous Black

LBRS GENESIS G69

sire: KBHR DISCIPLINE L046

BAR CK MS X38 106Z

LRS ICONIC 303C

dam: LRS MS ICONIC 997G

LRS MS ELEVATE 6021D



Act. BW	78
BW Ratio	ET
Adj WW	649
WW Ratio	ET
Adj YW	1230
YW Ratio	ET
WDA	3.39
ADG	3.66
Adj SC	37.0

Rank	CE	BW	WW	YW	ADG	MCE	Milk	STAY	DOC	CW	Marb	BF	REA	API	TI
EPDs	16.3	-1.6	84.7	127.0	0.26	9.6	25.8	22.1	13.5	44.1	0.72	0.004	0.52	189.2	101.0
10	10	35	35	45	5	30	3	30	20	3	99	99	2	5	

997G x Discipline flush. Like I said in Lot 20, these bulls might not blow you away in muscle and shear power - but they come from a proven pedigree on the top and bottom side, some could possibly be used on helpers, and they are gonna leave a great set of replacements. Full brother to lots 20, 33, 34, 35 and 107.

68

## LRS 314N

BD: 2/25/25 • ASA#: 4522339 • Tattoo: 314N  
1/2 SM 1/2 AN • Homozygous Polled • Homozygous Black

TEHAMA PATRIARCH F028

sire: CCR ANTHEM 3355J

CCR MS 5161 COWBOY 8636F

HF SAFE &amp; SOUND 019

dam: LRS MS SAFE AND SOUND 314L

LRS MS BROAD RANGE 1115J



Act. BW	82
BW Ratio	101
Adj WW	767
WW Ratio	108
Adj YW	1231
YW Ratio	99
WDA	3.33
ADG	2.95
Adj SC	38.1

Rank	CE	BW	WW	YW	ADG	MCE	Milk	STAY	DOC	CW	Marb	BF	REA	API	TI
EPDs	16.7	-1.7	86.0	135.5	0.31	11.8	26.1	18.0	11.4	48.6	0.69	0.011	0.92	169.2	97.3
15	25	25	25	30	2	30	20	70	25	15	95	15	10	10	

Heifer bull. The Safe and Sound females are not big cows but did a great job their first year as cows. This mating with Anthem really worked well on a bull that should work on heifers.

70

## LRS 2101L

BD: 3/7/25 • ASA#: 4522312 • Tattoo: 2101N  
3/4 SM 1/4 AN • Homozygous Polled • Homozygous Black

DB ICONIC G95

sire: LRS 711L

LRS MS EAGLE 983G

LRS FALCON 442G

dam: LRS MS FALCON 2101K

LRS MS TOPGRADE 303A



Act. BW	84
BW Ratio	103
Adj WW	737
WW Ratio	104
Adj YW	1360
YW Ratio	108
WDA	3.67
ADG	3.94
Adj SC	39.2

Rank	CE	BW	WW	YW	ADG	MCE	Milk	STAY	DOC	CW	Marb	BF	REA	API	TI
EPDs	7.3	0.8	101.7	166.5	0.41	3.8	22.3	17.4	18.6	66.2	0.38	-0.062	1.14	143.0	95.6
90	70	3	2	2	95	65	25	3	3	55	15	3	40	15	

His sire, 711L, was part of a great flush in our 2024 sale but got hurt and was not sold. We turned him out with a small group of cows and are really happy with the calves we got. Dam is a full sister to the dam of lot 40.

HARPER EXHIBITED THE GRAND CHAMPION MARKET HOG  
AT THE DAWSON COUNTY FAIR

Lot 72

# LASSLE RANCH SIMMENTALS



Lot 73

## LRS 3104N

BD: 2/26/25 • ASA#: 4522380 • Tattoo: 3104N  
PB SM • Homozygous Polled • Homozygous Black

WS PROCLAMATION E202

sire: KBHR GLOBAL J138

BAR CK MS X38 106Z

LRS CROSSFIT 4306J

dam: LRS MS CROSSFIT 3104L

LRS MS BADLANDS 063H



Act. BW	84
BW Ratio	103
Adj WW	684
WW Ratio	96
Adj YW	1217
YW Ratio	98
WDA	3.18
ADG	3.38
Adj SC	36.7

Rank	CE	BW	WW	YW	ADG	MCE	Milk	STAY	DOC	CW	Marb	BF	REA	API	TI
35	11.2	0.8	76.9	118.2	0.26	7.5	24.3	20.5	12.9	36.6	0.42	-0.030	0.82	157.2	86.2

Purebred bull with an outcross pedigree on the bottom side. Great stayability and marbling.

## LRS 238N

BD: 3/17/25 • ASA#: 4522280 • Tattoo: 238N  
3/4 SM 1/4 AN • Homozygous Polled • Homozygous Black

ASR AMERICAN PROUD H0301

sire: LRS DUTTON 611K

LRS MS EAGLE 983G

307 BACKROADS 736G

dam: LRS MS BACKROADS 238K

LRS MS RAINMAKER 0141H



Act. BW	92
BW Ratio	111
Adj WW	786
WW Ratio	111
Adj YW	1246
YW Ratio	99
WDA	3.49
ADG	2.92
Adj SC	37.2

Rank	CE	BW	WW	YW	ADG	MCE	Milk	STAY	DOC	CW	Marb	BF	REA	API	TI
4.9	3.8	93.8	141.3	0.30	6.8	26.9	21.7	18.4	55.4	0.54	-0.044	1.00	145.9	90.0	99

Out of another young cow doing a great job. Her first calf is with the replacement bred heifers she weaned this one with a 111 ratio.



Lot 78

## LRS 028N

BD: 3/1/25 • ASA#: 4522182 • Tattoo: 028N  
PB SM • Homozygous Polled • Homozygous Black

WS PROCLAMATION E202

sire: KBHR GLOBAL J138

BAR CK MS X38 106Z

ASR AMERICAN PROUD H0301

dam: LRS MS AMERICAN PROUD 254K

LRS MS EAGLE 983G



Act. BW	86
BW Ratio	ET
Adj WW	721
WW Ratio	ET
Adj YW	1251
YW Ratio	ET
WDA	3.49
ADG	3.33
Adj SC	36.9

Rank	CE	BW	WW	YW	ADG	MCE	Milk	STAY	DOC	CW	Marb	BF	REA	API	TI
15	14.1	-1.0	97.4	147.2	0.31	9.1	23.5	25.1	12.6	49.4	0.29	-0.060	1.14	174.9	98.4

254K x Global flush. 2 of these bulls in the sale. 254K, the donor dam, is a flush sister to LRS Dutton and has a great udder and is extremely sound. We have 5 sisters in the replacement pen. Full Brother to lot 58

## LRS 087N

BD: 3/1/25 • ASA#: 4522210 • Tattoo: 087N  
5/8 SM 3/8 AN • Homozygous Polled • Homozygous Black

DB ICONIC G95

sire: LRS 711L

LRS MS EAGLE 983G

SOUTHERN COMMANDER 1504E

dam: LRS MS COMMANDER 087H

LRS MS ELEVATE 896F



Act. BW	80
BW Ratio	93
Adj WW	675
WW Ratio	95
Adj YW	1156
YW Ratio	93
WDA	3.26
ADG	3.04
Adj SC	38.4

Rank	CE	BW	WW	YW	ADG	MCE	Milk	STAY	DOC	CW	Marb	BF	REA	API	TI
15	16.3	-3.6	69.1	111.4	0.26	6.7	26.0	18.5	15.5	40.5	0.75	-0.043	0.74	170.7	91.5

Heifer Bull. Sired by the 711L bull and out of a broody dam with a great udder whose WW and YW ratios are both over 100.

## LRS CBL 24N

BD: 3/16/25 • ASA#: 4581247 • Tattoo: 24N  
3/4 SM 1/4 AN • Homozygous Polled • Homozygous Black

LBR GENESIS G69

sire: KBHR KOTA L175

BAR CK MS X38 106Z

WS LIGHT SPEED E230

dam: CBL MS LIGHT SPEED G179

CBL MS. CEDAR RIDGE A23



Act. BW	75
BW Ratio	99
Adj WW	739
WW Ratio	107
Adj YW	1215
YW Ratio	100
WDA	3.49
ADG	3.00
Adj SC	38.2

Rank	CE	BW	WW	YW	ADG	MCE	Milk	STAY	DOC	CW	Marb	BF	REA	API	TI
10.0	0.2	79.5	118.6	0.24	7.8	26.1	18.7	17.4	44.5	0.73	-0.003	0.87	156.6	90.7	70

KBHR Kota is a full brother to the Discipline bull we also used. He was a larger framed brother the year they sold at Keller's. 75 lbs at birth and ended up over 700 lbs.

## LRS 739N

BD: 3/10/25 • ASA#: 4522087 • Tattoo: 739N  
3/4 SM 1/4 AN • Homozygous Polled • Homozygous Black

ASR AMERICAN PROUD H0301

sire: LRS DUTTON 611K

LRS MS EAGLE 983G

LRS ICONIC 303C

dam: LRS MS ICONIC 739E

LRS MS ROBUST 434B



Act. BW	86
BW Ratio	100
Adj WW	755
WW Ratio	106
Adj YW	1335
YW Ratio	107
WDA	3.76
ADG	3.64
Adj SC	39.8

Rank	CE	BW	WW	YW	ADG	MCE	Milk	STAY	DOC	CW	Marb	BF	REA	API	TI
10.8	-0.3	94.0	146.7	0.33	7.0	23.7	22.8	12.9	47.8	0.50	-0.044	1.20	162.7	95.8	60

It gets repetitive, but here is another Dutton bull with a great weaning ratio. His 9 year old LRS Iconic sired dam is ratioing 105 at weaning and 104 for yearling.

79

## LRS CBL 72N

BD: 4/5/25 • ASA#: 4581259 • Tattoo: 72N  
1/2 SM 1/2 AN • Homozygous Polled • Homozygous Black

KBHR GLOBAL J138

sire: **KS ABSOLUTE L145**

KS BRINLEY B33

BR GRANITE PEAK 710

dam: **OPP BLACKBIRD J523**

OPP BLACKBIRD A523



Act. BW	74
BW Ratio	98
Adj WW	730
WW Ratio	105
Adj YW	1288
YW Ratio	106
WDA	3.60
ADG	3.53
Adj SC	40.3

Rank	CE	BW	WW	YW	ADG	MCE	Milk	STAY	DOC	CW	Marb	BF	REA	API	TI
	11.5	0.6	86.8	142.9	0.35	11.5	27.6	15.0	15.3	57.8	0.35	-0.021	0.85	135.4	86.5
55	65	25	15	3	20	50	20	10	60	65	25	50	40		

True F1 Half blood out of a purebred angus cow and a Kenner simmental sire. Just an April 5th baby - might be the youngest bull in the offering.

81

## LRS 065N

BD: 3/14/25 • ASA#: 4522203 • Tattoo: 065N  
3/4 SM 1/4 AN • Homozygous Polled • Homozygous Black

LBRS GENESIS G69

sire: **KBHR DISCIPLINE L046**

BAR CK MS X38 106Z

BASIN RAINMAKER 4404

dam: **LRS MS RAINMAKER 065H**

LRS MS CLASS ACT 5118C



Act. BW	92
BW Ratio	107
Adj WW	769
WW Ratio	117
Adj YW	1252
YW Ratio	
WDA	3.61
ADG	3.05
Adj SC	40.6

Rank	CE	BW	WW	YW	ADG	MCE	Milk	STAY	DOC	CW	Marb	BF	REA	API	TI
	9.9	0.4	89.8	136.2	0.29	4.8	26.8	21.4	14.3	49.4	0.75	-0.035	0.67	167.5	97.5
70	60	20	25	45	85	25	3	30	25	10	50	55	10	10	

Stout KBHR Discipline son who really pushed down the scales this fall. Huge scrotal circumference out of a highly productive Basin Rainmaker 4404 dam with a nursing ration of 107 on her calves.

83

## LRS 9162N

BD: 3/2/25 • ASA#: 4522137 • Tattoo: 9162N  
1/2 SM 1/2 AN • Homozygous Polled • Homozygous Black

KG JUSTIFIED 3023

sire: **BOYD JUSTIFICATION**

BOYD ABIGALE 9056

LRS ELEVATE 213B

dam: **LRS MS ELEVATE 9162G**

LRS MS OLIE 078X



Act. BW	80
BW Ratio	92
Adj WW	652
WW Ratio	92
Adj YW	1160
YW Ratio	93
WDA	3.28
ADG	3.22
Adj SC	39.9

Rank	CE	BW	WW	YW	ADG	MCE	Milk	STAY	DOC	CW	Marb	BF	REA	API	TI
	21.0	-4.7	67.9	116.0	0.30	5.7	25.0	17.7	13.7	31.5	0.53	-0.022	0.75	166.0	87.4
2	3	85	60	35	75	40	25	40	70	35	65	40	10	35	

Heifer bull. Great option for calving ease heifer bull. He got sick and fell behind around christmas time. Dam is a direct daughter of 078X who is the grandma of 983G.

85

## LRS 361N

BD: 2/23/25 • ASA#: 4522359 • Tattoo: 361N  
PB SM • Homozygous Polled • Homozygous Black

WS PROCLAMATION E202

sire: **KBHR GLOBAL J138**

BAR CK MS X38 106Z

CCR POUNDER 2045F

dam: **LRS MS POUNDER 361L**

LRS MS EAGLE 983G



Act. BW	86
BW Ratio	106
Adj WW	674
WW Ratio	94
Adj YW	1109
YW Ratio	90
WDA	2.94
ADG	2.76
Adj SC	36.5

Rank	CE	BW	WW	YW	ADG	MCE	Milk	STAY	DOC	CW	Marb	BF	REA	API	TI
	9.7	-0.1	89.3	141.5	0.33	5.5	19.3	19.5	17.1	58.4	0.40	-0.052	1.00	159.9	94.0
55	30	20	15	15	55	80	15	4	3	20	75	30	15	15	

Dam is a daughter of the 983G cow. Check out his EPDs. Stayability, Docility, Marbling, REA and top 15 % API

80

## LRS 311N

BD: 2/11/25 • ASA#: 4522335 • Tattoo: 311N  
1/2 SM 1/2 AN • Homozygous Polled • Homozygous Black

KG JUSTIFIED 3023

sire: **BOYD JUSTIFICATION**

BOYD ABIGALE 9056

ASR AMERICAN PROUD H0301

dam: **LRS MS AMERICAN PROUD 311L**

LRS MS ICONIC 9159G



Act. BW	76
BW Ratio	ET
Adj WW	673
WW Ratio	ET
Adj YW	1161
YW Ratio	ET
WDA	3.28
ADG	3.10
Adj SC	38.9

Rank	CE	BW	WW	YW	ADG	MCE	Milk	STAY	DOC	CW	Marb	BF	REA	API	TI
	16.4	-1.9	83.5	131.6	0.30	7.2	25.2	19.5	15.6	47.2	0.58	-0.028	0.74	165.6	93.4
15	25	35	35	35	50	40	10	15	30	25	65	45	10	20	

Out of a first calf heifer, long and really smooth fronted who is good ribbed and has plenty of quarter, especially for his level of calving ease and birthweight.

82

## LRS 940N

BD: 3/29/25 • ASA#: 4522142 • Tattoo: 940N  
3/4 SM 1/4 AN • Homozygous Polled • Homozygous Black

MUSGRAVE 316 STUNNER

sire: **LRS CROSSFIT 4306J**

LRS MS CLASS ACT 437B

HOOK'S EAGLE 6E

dam: **LRS MS EAGLE 940G**

LRS MS TIMTRAVELER 328A



Act. BW	84
BW Ratio	98
Adj WW	735
WW Ratio	104
Adj YW	1291
YW Ratio	104
WDA	3.69
ADG	3.50
Adj SC	37.4

Rank	CE	BW	WW	YW	ADG	MCE	Milk	STAY	DOC	CW	Marb	BF	REA	API	TI
	8.5	-0.4	83.9	129.4	0.28	5.1	23.6	17.8	15.0	52.1	0.74	-0.025	1.06	157.7	94.6
80	45	30	35	50	80	55	25	20	20	15	65	10	20	15	

Just an end of march born calf sired by Crossfit. He just needs some more time to catch up with his older penmates. His dam is ratioing over 100 for both WW and YW ratios.

84

## LRS CBL 6N

BD: 3/6/25 • ASA#: 4581260 • Tattoo: 6N  
3/4 SM 1/4 AN • Homozygous Polled • Homozygous Black

HOOK'S BEACON 56B

sire: **KBHR HONOR H060**

WS MISS SUGAR C4

LRS TYCOON 120H

dam: **CBL MS F. TRAIN K142**

CBL MS ICONIC E297



Act. BW	69
BW Ratio	95
Adj WW	618
WW Ratio	89
Adj YW	1184
YW Ratio	97
WDA	3.13
ADG	3.58
Adj SC	38.1

Rank	CE	BW	WW	YW	ADG	MCE	Milk	STAY	DOC	CW	Marb	BF	REA	API	TI
	16.7	-4.7	74.0	117.9	0.27	8.1	22.1	20.9	10.4	37.7	0.47	-0.044	0.82	164.5	88.6
15	3	65	60	55	35	70	4	80	55	40	35	30	15	30	

Heifer bull. Long deep sided with a great set of testicles already, this balanced Honor son will work on a set of heifers.

86

## LRS 2104N

BD: 3/12/25 • ASA#: 4522314 • Tattoo: 2104N  
3/4 SM 1/4 AN • Homozygous Polled • Homozygous Black

WS PROCLAMATION E202

sire: **KBHR GLOBAL J138**

BAR CK MS X38 106Z

LRS TOPSHELF 902F

dam: **LRS MS TOPSHELF 2104K**

LRS MS EAGLE 918G

Act. BW	86
BW Ratio	104
Adj WW	673
WW Ratio	95
Adj YW	1259
YW Ratio	100
WDA	3.41
ADG	3.70
Adj SC	38.0

Rank	CE	BW	WW	YW	ADG	MCE	Milk	STAY	DOC	CW	Marb	BF	REA	API	TI
	12.8	-0.3	89.4	143.0	0.33	8.2	20.2	21.8	17.0	41.5	0.35	-0.063	0.99	153.6	89.3
40	50	20	15	20	30	80	3	10	40	60	15	10	25	30	

Good testicled, long sided bull out of a young Top Shelf dam with an excellent udder.

# LASSLE RANCH SIMMENTALS

## LRS CBL 17N

87

BD: 3/15/25 • ASA#: 4581233 • Tattoo: 17N  
3/4 SM 1/4 AN • Homozygous Polled • Homozygous Black

HOOK'S BEACON 56B

sire: KBHR HONOR H060

WS MISS SUGAR C4

NLC ZUGABE 11H

dam: CBL MS ZUGABE K632

CBL MS T 10 E47



Act. BW	69
BW Ratio	95
Adj WW	648
WW Ratio	93
Adj YW	1282
YW Ratio	105
WDA	3.38
ADG	4.00
Adj SC	42.1

Rank	CE	BW	WW	YW	ADG	MCE	Milk	STAY	DOC	CW	Marb	BF	REA	API	TI
13.9	-1.9	80.8	122.2	0.26	9.2	23.1	18.9	11.9	29.7	0.53	-0.059	0.95	157.2	90.6	
30	25	40	50	60	20	60	15	65	75	35	25	15	20	25	

Bull does have some white on his sheath which is really only noticeable on the one side. Sound made and a good option for those looking to improve some carcass traits.



THE FREEZE BRANDING CREW



Lot 90

## LRS 9101N

91

BD: 4/1/25 • ASA#: 4522160 • Tattoo: 9101N  
3/4 SM 1/4 AN • Homozygous Polled • Homozygous Black

TEHAMA PATRIARCH F028

sire: CCR ANTHEM 3355J

CCR MS 5161 COWBOY 8636F

RBS BOISE B63

dam: LRS MS BOISE 9101G

LRS MS ELEVATE 637D



Act. BW	88
BW Ratio	102
Adj WW	660
WW Ratio	93
Adj YW	1253
YW Ratio	101
WDA	3.57
ADG	3.74
Adj SC	40.0

Rank	CE	BW	WW	YW	ADG	MCE	Milk	STAY	DOC	CW	Marb	BF	REA	API	TI
12.7	1.1	79.2	109.8	0.19	9.8	25.1	20.5	14.2	29.3	0.28	-0.024	0.92	136.3	78.6	
40	75	45	75	95	15	40	10	30	75	30	65	65	15	50	65

Just an April 1st calf, his dam is one that kind of goes unnoticed but every fall her calves end up in the keeper pen probably explained by her 104 nursing ratio.

## LRS 378N

88

BD: 2/26/25 • ASA#: 4522367 • Tattoo: 378N  
1/2 SM 1/2 AN • Homozygous Polled • Homozygous Black

TEHAMA PATRIARCH F028

sire: CCR BEDROCK 5171J

CCR MS 2073 COWBOY 5171C

CCR POUNDER 2045F

dam: LRS MS POUNDER 378L

LRS MS NEW FRONT 9103G



Act. BW	84
BW Ratio	103
Adj WW	706
WW Ratio	99
Adj YW	1277
YW Ratio	103
WDA	3.34
ADG	3.62
Adj SC	40.2

Rank	CE	BW	WW	YW	ADG	MCE	Milk	STAY	DOC	CW	Marb	BF	REA	API	TI
11.4	0.6	94.5	155.9	0.38	8.9	19.3	23.7	18.1	50.3	0.74	0.031	0.47	176.3	99.2	
55	65	10	5	5	25	90	1	4	20	15	99	85	5	10	

Big nutted bedrock son out of a first calf heifer who broke the 700 lb barrier at weaning. Top 1% of the breed for stayability.

## LRS CBL 18N

89

BD: 3/14/25 • ASA#: 4581246 • Tattoo: 18N  
3/4 SM 1/4 AN • Homozygous Polled • Homozygous Black

LBRMS GENESIS G69

sire: KBHR KOTA L175

BAR CK MS X38 106Z

WS LIGHT SPEED E230

dam: CBL MS LIGHT SPEED G719

CBL MS IN SURE 22B D426



Act. BW	74
BW Ratio	98
Adj WW	584
WW Ratio	84
Adj YW	1119
YW Ratio	92
WDA	3.10
ADG	3.37
Adj SC	35.1

Rank	CE	BW	WW	YW	ADG	MCE	Milk	STAY	DOC	CW	Marb	BF	REA	API	TI
9.4	-0.3	73.7	113.1	0.25	6.8	25.3	17.2	15.5	54.4	0.82	-0.032	0.97	157.8	90.6	
75	50	65	65	70	55	40	30	20	15	10	50	15	20	25	

Larger framed really attractive Kota son that ranks well in all the carcass traits.

## LRS 3148N

90

BD: 2/18/25 • ASA#: 4522397 • Tattoo: 3148N  
5/8 SM 3/8 AN • Homozygous Polled • Homozygous Black

TEHAMA PATRIARCH F028

sire: CCR BEDROCK 5171J

CCR MS 2073 COWBOY 5171C

CCR VARSITY 4112H

dam: LRS MS VARSITY 3148L

LRS MS EAGLE 046H



Act. BW	74
BW Ratio	93
Adj WW	657
WW Ratio	92
Adj YW	1220
YW Ratio	99
WDA	3.13
ADG	3.57
Adj SC	40.3

Rank	CE	BW	WW	YW	ADG	MCE	Milk	STAY	DOC	CW	Marb	BF	REA	API	TI
13.4	-2.6	80.6	122.7	0.26	9.0	20.1	17.2	15.5	47.7	0.79	-0.020	0.51	167.0	95.9	
35	15	40	50	60	20	85	30	20	25	10	75	80	10	15	

Long sided, big testicles, attractive, smooth made bull sired by bedrock and out of a first calf heifer.

## LRS 6016N

92

BD: 3/8/25 • ASA#: 4522069 • Tattoo: 6016N  
3/4 SM 1/4 AN • Homozygous Polled • Homozygous Black

HOOK'S GALILEO 210G

sire: HA COVENANT 30K

HOOK'S CERES 11C

PA FULL POWER 1208

dam: LRS MS FULL POWER 6016D

LRS MS TOPGRADE 3015A



Act. BW	88
BW Ratio	102
Adj WW	649
WW Ratio	92
Adj YW	1207
YW Ratio	97
WDA	3.38
ADG	3.50
Adj SC	36.7

Rank	CE	BW	WW	YW	ADG	MCE	Milk	STAY	DOC	CW	Marb	BF	REA	API	TI
10.7	0.5	78.5	122.6	0.28	3.8	25.9	23.1	15.1	38.3	0.73	-0.027	0.47	166.2	90.0	
60	65	50	50	50	95	35	1	20	50	15	65	85	10	30	

His dam is a coming 10 year old. Top 1% stayability. We mention that a lot, but it is highly important. We want heifers that can turn into cows and last a long time.

93

## LRS 379N

BD: 3/8/25 • ASA#: 4522368 • Tattoo: 379N  
5/8 SM 3/8 AN • Homozygous Polled • Homozygous Black

TEHAMA PATRIARCH F028

sire: CCR ANTHEM 3355J

CCR MS 5161 COWBOY 8636F

CCR WACO 4142G

dam: LRS MS WACO 379L

LRS MS CAPITALIST 316 007H



Act. BW	76
BW Ratio	94
Adj WW	713
WW Ratio	100
Adj YW	1109
YW Ratio	90
WDA	3.00
ADG	2.52
Adj SC	34.2

Rank	CE	BW	WW	YW	ADG	MCE	Milk	STAY	DOC	CW	Marb	BF	REA	API	TI
20	15.2	-3.9	74.4	111.2	0.23	9.6	22.0	16.3	9.7	36.0	0.51	0.023	0.53	151.0	86.7

Heifer bull. Excellent heifer bull option who still weaned right at 700 lbs.

95

## LRS CBL 2N

BD: 2/28/25 • ASA#: 4581230 • Tattoo: 2N  
PB SM • Homozygous Polled • Homozygous Black

HOOK'S BEACON 56B

sire: KBHR HONOR H060

WS MISS SUGAR C4

LRS FALCON 442G

dam: CBL MS L13

CBL MS J131



Act. BW	74
BW Ratio	106
Adj WW	704
WW Ratio	101
Adj YW	1261
YW Ratio	104
WDA	3.28
ADG	3.53
Adj SC	34.8

Rank	CE	BW	WW	YW	ADG	MCE	Milk	STAY	DOC	CW	Marb	BF	REA	API	TI
85	6.1	-0.5	96.0	143.4	0.30	6.5	22.7	15.8	9.4	71.0	0.21	-0.059	1.40	139.9	93.5

KBHR Honor son out of a first calf heifer who hit the pens this fall just over 700 lbs. Top 1% REA and top 20% for both WW and YW.

96

## LRS 042N

BD: 3/5/25 • ASA#: 4522188 • Tattoo: 042N  
5/8 SM 3/8 AN • Heterozygous Polled • Homozygous Black

TEHAMA PATRIARCH F028

sire: CCR BEDROCK 5171J

CCR MS 2073 COWBOY 5171C

HOOK'S EAGLE 6E

dam: LRS MS EAGLE 042H

LRS MS EASY ANSWER 811F



Act. BW	80
BW Ratio	93
Adj WW	722
WW Ratio	102
Adj YW	1211
YW Ratio	97
WDA	3.43
ADG	3.08
Adj SC	42.6

Rank	CE	BW	WW	YW	ADG	MCE	Milk	STAY	DOC	CW	Marb	BF	REA	API	TI
20	15.4	-3.3	86.6	136.1	0.31	8.8	26.8	18.2	15.9	32.4	0.87	0.019	0.48	180.1	103.4

Heterozygous polled and scurred. We knocked the scurs off. His dam is parading around a 110 nursing ratio. Over 700 lbs when he crossed the scales this fall and top 3% of the breed for API.

98

## LRS CBL 19N

BD: 3/15/25 • ASA#: 4581249 • Tattoo: 19N  
1/2 SM 1/2 AN • Homozygous Polled • Homozygous Black

EGL FIRESTEEL 103F

sire: CCR FIRE POWER 8081J

CCR MS COMMAND 8081F

HOOK'S BALTIC 17B

dam: CBL MS BALTIC G459

CLASSIC PRIMROSE 537



Act. BW	74
BW Ratio	98
Adj WW	708
WW Ratio	102
Adj YW	1226
YW Ratio	101
WDA	3.48
ADG	3.26
Adj SC	34.6

Rank	CE	BW	WW	YW	ADG	MCE	Milk	STAY	DOC	CW	Marb	BF	REA	API	TI
65	10.1	2.0	85.9	142.1	0.35	5.4	21.0	19.5	16.1	47.3	0.57	-0.058	0.91	152.7	89.7

Dam has had 5 calves, and this is her first bull calf while maintaining a 364 day calving interval. Brought this one home over 700 lbs.

94

## LRS CBL 30N

BD: 3/16/25 • ASA#: 4581244 • Tattoo: 30N  
1/2 SM 1/2 AN • Homozygous Polled • Homozygous Black

EGL FIRESTEEL 103F

sire: CCR FIRE POWER 8081J

CCR MS COMMAND 8081F

WS PROCLAMATION E202

dam: CBL MS PROCLAMATION H50

CBL MS ARSENAL F408



Act. BW	74
BW Ratio	98
Adj WW	723
WW Ratio	104
Adj YW	1123
YW Ratio	92
WDA	3.29
ADG	2.53
Adj SC	38.2

Rank	CE	BW	WW	YW	ADG	MCE	Milk	STAY	DOC	CW	Marb	BF	REA	API	TI
85	7.5	2.3	88.4	136.4	0.30	3.6	24.7	14.8	14.6	44.2	0.64	-0.024	0.62	141.4	91.1

Firepower son who ratioed 104 off the cow. Dam's only other bull calf went through the sale and her 2 heifers have both been retained. Great cow family.



97

## LRS CBL 3N

BD: 3/4/25 • ASA#: 4581231 • Tattoo: 3N  
1/2 SM 1/2 AN • Homozygous Polled • Homozygous Black

TEHAMA PATRIARCH F028

sire: CCR BEDROCK 5171J

CCR MS 2073 COWBOY 5171C

LRS TYCOON 120H

dam: CBL MS L523

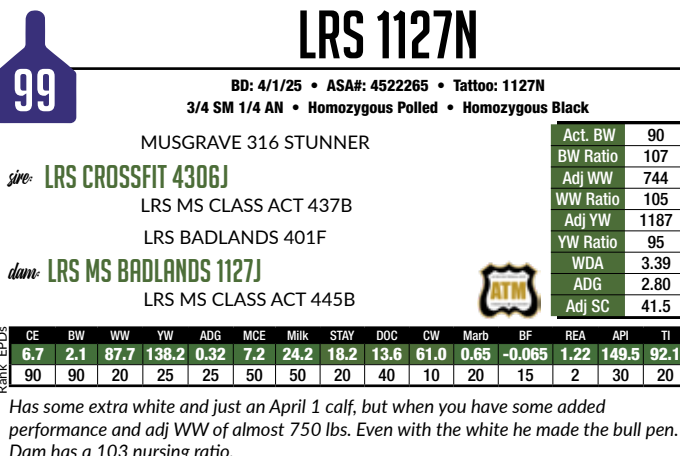
CBL MS RESOURCE G559



Act. BW	70
BW Ratio	101
Adj WW	732
WW Ratio	106
Adj YW	1237
YW Ratio	102
WDA	3.27
ADG	3.21
Adj SC	38.0

Rank	CE	BW	WW	YW	ADG	MCE	Milk	STAY	DOC	CW	Marb	BF	REA	API	TI
60	10.8	0.8	96.7	160.9	0.40	7.9	24.8	17.4	14.9	73.9	0.52	0.004	1.09	152.1	95.9

Out of a first calf heifer who did a great job the first time out the gate. Ratioed 106 for WW and carries the G+ and ATM Stamps.



## LRS 1127N

BD: 4/1/25 • ASA#: 4522265 • Tattoo: 1127N  
3/4 SM 1/4 AN • Homozygous Polled • Homozygous Black

MUSGRAVE 316 STUNNER

sire: LRS CROSSFIT 4306J

LRS MS CLASS ACT 437B

LRS BADLANDS 401F

dam: LRS MS BADLANDS 1127J

LRS MS CLASS ACT 445B



Act. BW	90
BW Ratio	107
Adj WW	744
WW Ratio	105
Adj YW	1187
YW Ratio	95
WDA	3.39
ADG	2.80
Adj SC	41.5

Rank	CE	BW	WW	YW	ADG	MCE	Milk	STAY	DOC	CW	Marb	BF	REA	API	TI
90	6.7	2.1	87.7	138.2	0.32	7.2	24.2	18.2	13.6	61.0	0.65	-0.065	1.22	149.5	92.1

Has some extra white and just an April 1 calf, but when you have some added performance and adj WW of almost 750 lbs. Even with the white he made the bull pen. Dam has a 103 nursing ratio.

# LASSLE RANCH SIMMENTALS

## LRS CBL 4N

100

BD: 3/5/25 • ASA#: 4581232 • Tattoo: 4N  
1/2 SM 1/2 AN • Homozygous Polled • Homozygous Black

TEHAMA PATRIARCH F028

sire: CCR BEDROCK 5171J

CCR MS 2073 COWBOY 5171C

BCLR MANIFESTO G352

dam: CBL MS L303

CBA MS FULL POWER D336



Act. BW	70
BW Ratio	101
Adj WW	638
WW Ratio	92
Adj YW	1135
YW Ratio	93
WDA	2.97
ADG	3.16
Adj SC	38.1

Rank	CE	BW	WW	YW	ADG	MCE	Milk	STAY	DOC	CW	Marb	BF	REA	API	TI
40	13.0	-2.2	80.2	122.6	0.27	8.7	22.9	17.2	17.7	42.4	0.91	0.023	0.71	172.0	98.4
10	40	20	45	50	55	25	60	30	5	40	4	99	50	10	10

Out of a first calf heifer he brings some top marbling genetics ranking in the top 5% of the breed and also the top 10% for both API and TI.

## LRS 286N

102

BD: 3/28/25 • ASA#: 4522306 • Tattoo: 286N  
1/2 SM 1/2 AN • Homozygous Polled • Homozygous Black

DB ICONIC G95

sire: LRS GLENDIVE 8021L

LRS MS EAGLE 983G

MCCONNELL ALTITUDE 3114

dam: LRS MS ALTITUDE 286K

LRS MS TOPGRADE 3021A



Act. BW	88
BW Ratio	106
Adj WW	710
WW Ratio	100
Adj YW	1260
YW Ratio	100
WDA	3.50
ADG	3.47
Adj SC	37.3

Rank	CE	BW	WW	YW	ADG	MCE	Milk	STAY	DOC	CW	Marb	BF	REA	API	TI
65	10.3	-1.2	79.4	131.4	0.33	3.2	23.8	15.9	17.3	52.2	0.69	0.002	0.62	154.0	91.6
25	65	35	45	35	20	95	50	45	10	20	15	90	65	25	25

LRS Glendive is a full brother to the 711L bull mentioned earlier. He sold to Cow Camp Ranch in Kansas, and we have leased him back for spring breeding the last couple summers. His young dam had her first calf go through the sale last year as well.

## LRS CBL 58N

104

BD: 4/4/25 • ASA#: 4581258 • Tattoo: 58N  
1/2 SM 1/2 AN • Homozygous Polled • Homozygous Black

HF SAFE & SOUND 019

sire: LRS BINGO 1186L

LRS MS BADLANDS 1186J

TSN VISIONARY G626

dam: CBL MS J11

CBL MS LIGHT SPEED G379



Act. BW	75
BW Ratio	101
Adj WW	677
WW Ratio	98
Adj YW	1169
YW Ratio	96
WDA	3.30
ADG	3.11
Adj SC	40.2

Rank	CE	BW	WW	YW	ADG	MCE	Milk	STAY	DOC	CW	Marb	BF	REA	API	TI
20	15.2	-1.8	73.8	113.9	0.25	7.8	23.7	13.9	13.8	49.4	0.58	0.006	0.95	147.6	86.6
40	20	25	65	65	70	40	55	65	35	25	25	90	15	30	40

Stout, thick and full of meat and muscle in the more moderate son of Absolute. Young calf that was born on the last day of March.

## LRS CBL 14N

106

BD: 3/12/25 • ASA#: 4581228 • Tattoo: 14N  
1/2 SM 1/2 AN • Homozygous Polled • Homozygous Black

TEHAMA PATRIARCH F028

sire: CCR ANTHEM 3355J

CCR MS 5161 COWBOY 8636F

BCLR MANIFESTO G352

dam: CBL MS L163

CBL MS CONSENSUS D546



Act. BW	68
BW Ratio	98
Adj WW	651
WW Ratio	94
Adj YW	1274
YW Ratio	105
WDA	3.28
ADG	3.95
Adj SC	34.5

Rank	CE	BW	WW	YW	ADG	MCE	Milk	STAY	DOC	CW	Marb	BF	REA	API	TI
15	16.0	-3.2	74.1	112.9	0.24	10.9	23.0	20.0	8.5	34.5	0.74	0.027	0.78	171.8	92.3
40	15	10	65	70	75	4	60	10	95	60	15	99	35	10	20

Attractive Anthem son out of a first calf heifer who would be a great option for a set of young cows, and maybe even a group of heifers.



Lot 100

## LRS CBL 15N

101

BD: 3/15/25 • ASA#: 4581229 • Tattoo: 15N  
1/2 SM 1/2 AN • Homozygous Polled • Homozygous Black

TEHAMA PATRIARCH F028

sire: CCR ANTHEM 3355J

CCR MS 5161 COWBOY 8636F

LRS TYCOON 120H

dam: CBL MS L63

CBL MS PAYDAY F588



Rank	CE	BW	WW	YW	ADG	MCE	Milk	STAY	DOC	CW	Marb	BF	REA	API	TI
75	9.3	0.9	91.5	142.5	0.32	8.4	25.7	18.7	12.4	62.3	0.34	-0.023	1.02	139.5	87.9
15	75	70	15	15	25	30	35	15	55	5	60	65	10	45	35

His dam is sired by Tycoon, who was a son of the 437B cow. Top 15% of the breed for WW and YW and top 10% for REA, he earns his ATM badge.

## LRS CBL 54N

103

BD: 3/31/25 • ASA#: 4581256 • Tattoo: 54N  
3/4 SM 1/4 AN • Homozygous Polled • Homozygous Black

KBHR GLOBAL J138

sire: KS ABSOLUTE L145

KS BRINLEY B33

TSN AQUILA G732

dam: CBL MS J611

CBL MS FULL TIME F668

Act. BW	76
BW Ratio	103
Adj WW	688
WW Ratio	99
Adj YW	1071
YW Ratio	88
WDA	3.09
ADG	2.42
Adj SC	39.0

Rank	CE	BW	WW	YW	ADG	MCE	Milk	STAY	DOC	CW	Marb	BF	REA	API	TI
25	14.4	-2.7	67.2	101.3	0.21	10.4	26.7	17.3	11.6	31.5	0.19	-0.041	0.90	131.4	74.9
15	25	15	85	85	90	10	25	30	65	70	85	35	20	55	75

Just an April 4th baby. Larger framed long sided, big footed Bingo son. Bingo's dam is 1186J, who is the dam of lot 24.

## LRS 040N

105

BD: 3/25/25 • ASA#: 4522187 • Tattoo: 040N  
1/2 SM 1/2 AN • Homozygous Polled • Homozygous Black

TEHAMA PATRIARCH F028

sire: CCR ANTHEM 3355J

CCR MS 5161 COWBOY 8636F

LRS ICONIC 303C

dam: LRS MS ICONIC 040H

LRS MS BISMARCK 125Y

Act. BW	82
BW Ratio	95
Adj WW	700
WW Ratio	99
Adj YW	1301
YW Ratio	104
WDA	3.66
ADG	3.79
Adj SC	37.2

Rank	CE	BW	WW	YW	ADG	MCE	Milk	STAY	DOC	CW	Marb	BF	REA	API	TI
45	12.3	-1.2	81.1	117.1	0.23	9.9	23.2	14.4	13.1	55.1	0.39	0.005	0.98	134.6	84.5
45	45	35	40	60	80	10	60	60	45	15	55	90	10	50	45

Dam is a super productive cow. Her only other bull sold through the sale and her 2 heifer calves are both part of the herd.

107

## LRS 778N

BD: 3/12/25 • ASA#: 4522097 • Tattoo: 778N  
PB SM • Homozygous Polled • Homozygous Black

LBRS GENESIS G69

sire: KBHR DISCIPLINE L046

BAR CK MS X38 106Z

LRS ICONIC 303C

dam: LRS MS ICONIC 997G

LRS MS ELEVATE 6021D



Act. BW	86
BW Ratio	ET
Adj WW	688
WW Ratio	ET
Adj YW	1150
YW Ratio	ET
WDA	3.26
ADG	2.92
Adj SC	36.5

Rank	CE	BW	WW	YW	ADG	MCE	Milk	STAY	DOC	CW	Marb	BF	REA	API	TI
EPDs	16.6	-1.5	85.0	129.5	0.28	8.0	25.8	22.2	15.8	39.7	0.76	-0.017	0.56	193.1	102.7
5	15	30	30	35	20	30	2	10	30	2	99	99	1	4	

997G x Discipline flush. Like I said in Lot 20, these bulls might not blow you away in muscle and shear power - but they come from a proven pedigree on the top and bottom side, some could possibly be used on helpers, and they are gonna leave a great set of replacements. Full brother to lots 20, 33, 34, 35, and 72.

109

## LRS CBL 32N

BD: 3/16/25 • ASA#: 4581235 • Tattoo: 32N  
PB SM • Homozygous Polled • Homozygous Black

HOOK'S BEACON 56B

sire: KBHR HONOR H060

WS MISS SUGAR C4

LRS FALCON 442G

dam: CBL MS FALCON K482

CBL MS INNOVATION E477



Act. BW	74
BW Ratio	103
Adj WW	688
WW Ratio	99
Adj YW	1154
YW Ratio	95
WDA	3.17
ADG	2.95
Adj SC	39.2

Rank	CE	BW	WW	YW	ADG	MCE	Milk	STAY	DOC	CW	Marb	BF	REA	API	TI
EPDs	15.4	-2.2	79.0	123.9	0.28	8.8	23.6	21.9	10.3	28.7	0.42	-0.052	1.09	173.7	92.9
10	10	55	40	35	10	45	3	70	65	20	75	15	10	20	

Heifer Bull. Deep sided soft made heifer bull option with great stayability. Big set of testicles common in all the Honor bulls.

111

## LRS 139N

BD: 2/27/25 • ASA#: 4522234 • Tattoo: 139N  
1/2 SM 1/2 AN • Homozygous Polled • Homozygous Black

GIBBS 9121G KENWORTH

sire: GIBBS KINGPIN 1140J

GIBBS 8028F FANCY 6138D

TEHAMA TAHOE B767

dam: LRS MS TAHOE 139J

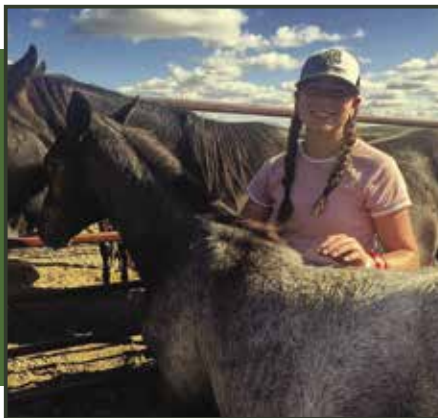
LRS MS CLUB KING 129Y



Act. BW	90
BW Ratio	106
Adj WW	647
WW Ratio	91
Adj YW	1255
YW Ratio	101
WDA	3.43
ADG	3.83
Adj SC	38.2

Rank	CE	BW	WW	YW	ADG	MCE	Milk	STAY	DOC	CW	Marb	BF	REA	API	TI
EPDs	12.2	-0.4	86.8	139.6	0.33	5.9	27.4	20.1	9.0	62.0	0.73	-0.024	0.61	168.0	96.7
45	45	25	20	20	70	25	10	90	10	15	65	65	10	15	

Ranks in the top 20% for WW and YW EPDs with great stayability and API.



HARPER AND DAKOTA, HER NEW HORSE  
FROM FROELICH LEGACY QUARTER HORSES



108

## LRS CBL 9N

BD: 3/11/25 • ASA#: 4581237 • Tattoo: 9N  
1/2 SM 1/2 AN • Homozygous Polled • Homozygous Black

TEHAMA PATRIARCH F028

sire: CCR BEDROCK 5171J

CCR MS 2073 COWBOY 5171C

LRS TOPSHELF 902F

dam: KS MISS TOPSHELF K638

KS GRACELYN G1971



Act. BW	74
BW Ratio	102
Adj WW	711
WW Ratio	102
Adj YW	1269
YW Ratio	104
WDA	3.43
ADG	3.53
Adj SC	39.9

Rank	CE	BW	WW	YW	ADG	MCE	Milk	STAY	DOC	CW	Marb	BF	REA	API	TI
EPDs	14.0	-2.8	84.0	128.4	0.28	9.8	24.7	15.0	12.0	44.2	0.53	-0.012	0.48	160.7	92.2
30	15	30	40	50	15	45	50	60	35	35	75	85	30	20	

Smooth shouldered, deep sided, square hipped bull that weaned over 700 lbs.

110

## LRS 1112N

BD: 3/10/25 • ASA#: 4522261 • Tattoo: 1112N  
1/2 SM 1/2 AN • Homozygous Polled • Homozygous Black

TEHAMA PATRIARCH F028

sire: CCR ANTHEM 3355J

CCR MS 5161 Cowboy 8636F

TEHAMA TAHOE B767

dam: LRS MS TAHOE 1112J

LRS Ms New Front 9111G



Act. BW	86
BW Ratio	101
Adj WW	729
WW Ratio	103
Adj YW	1180
YW Ratio	95
WDA	3.36
ADG	2.85
Adj SC	37.8

Rank	CE	BW	WW	YW	ADG	MCE	Milk	STAY	DOC	CW	Marb	BF	REA	API	TI
EPDs	16.5	-1.9	79.6	119.8	0.25	8.9	25.5	19.1	13.5	34.5	0.74	0.025	0.51	169.7	93.8
15	25	45	55	70	25	35	15	40	60	15	99	80	10	20	

Heifer bull. Another heifer bull with over a 700 lb weaning weight. Dam is rating 108 for both WW and YW on her first 3 calves.



KELLY FROELICH - GONE TO SOON,  
FOREVER IN OUR HEARTS

# LASSLE RANCH SIMMENTALS



Lot 112

## LRS CBL 31N

112

BD: 3/17/25 • ASA#: 4581243 • Tattoo: 31N  
1/2 SM 1/2 AN • Homozygous Polled • Homozygous Black

EGL FIRESTEEL 103F

sire: CCR FIRE POWER 8081J

CCR MS COMMAND 8081F

LRS TOPSHELF 902F

dam: CBL MS J191

CBL MS ELEVATE E447



Act. BW	80
BW Ratio	107
Adj WW	751
WW Ratio	108
Adj YW	1285
YW Ratio	106
WDA	3.59
ADG	3.37
Adj SC	39.7

Rank	CE	BW	WW	YW	ADG	MCE	Milk	STAY	DOC	CW	Marb	BF	REA	API	TI
7.3	2.2	91.3	150.1	0.37	5.0	24.7	15.5	15.8	68.8	0.41	-0.029	1.13	133.7	88.2	
90	90	15	10	10	85	45	45	15	2	50	65	3	55	35	

The Firepowers will add growth and REA. 751 lbs at weaning and backed up by the ATM stamp.

## LRS CBL 21N

114

BD: 3/14/25 • ASA#: 4581234 • Tattoo: 21N  
PB SM • Homozygous Polled • Homozygous Black

KBHR GLOBAL J138

sire: KS ABSOLUTE L145

KS BRINLEY B33

LRS FALCON 442G

dam: CBL MS FALCON K212

CBL MS 1018 C575



Act. BW	68
BW Ratio	95
Adj WW	710
WW Ratio	102
Adj YW	1219
YW Ratio	100
WDA	3.32
ADG	3.21
Adj SC	35.6

Rank	CE	BW	WW	YW	ADG	MCE	Milk	STAY	DOC	CW	Marb	BF	REA	API	TI
13.9	2.8	89.3	137.8	0.30	6.2	26.5	18.3	16.6	51.9	0.17	-0.078	1.35	145.7	87.1	
15	80	20	20	25	45	30	25	10	10	50	45	2	30	35	

Super long sided, larger framed Absolute son. Ratioed 102 at weaning and is in the top 20% for WW and YW EPDs.

## LRS 0140N

113

BD: 3/9/25 • ASA#: 4522171 • Tattoo: 0140N  
3/4 SM 1/4 AN • Homozygous Polled • Homozygous Black

LBR5 GENESIS G69

sire: KBHR DISCIPLINE L046

BAR CK MS X38 106Z

LD CAPITALIST 316

dam: LRS MS CAPITALIST 0140H

LRS MS CLASS ACT 437B



Act. BW	82
BW Ratio	95
Adj WW	716
WW Ratio	101
Adj YW	1123
YW Ratio	90
WDA	3.26
ADG	2.57
Adj SC	37.8

Rank	CE	BW	WW	YW	ADG	MCE	Milk	STAY	DOC	CW	Marb	BF	REA	API	TI
16.4	-2.3	76.7	117.2	0.25	9.1	27.4	24.3	15.7	51.3	0.56	-0.010	0.95	170.8	89.1	
15	20	55	60	70	20	25	1	15	20	30	85	15	10	30	

Heifer bull. Out of a very productive cow who records a 109 nursing ratio on her first 4 calves. Her only other bull went through the sale and her 2 heifer calves are both part of the herd. Sister sells as lot 122 in the bred heifer division.

## LRS 855N

115

BD: 3/6/25 • ASA#: 4522113 • Tattoo: 855N  
1/2 SM 1/2 AN • Homozygous Polled • Homozygous Black

TEHAMA PATRIARCH F028

sire: CCR BEDROCK 5171J

CCR MS 2073 COWBOY 5171C

LRS TENX EXCELLANCE 352C

dam: LRS MS EXCELLENCE 855F

LRS MS FINAL ANSWER 904W



Act. BW	90
BW Ratio	105
Adj WW	701
WW Ratio	99
Adj YW	1370
YW Ratio	110
WDA	3.79
ADG	4.21
Adj SC	44.1

Rank	CE	BW	WW	YW	ADG	MCE	Milk	STAY	DOC	CW	Marb	BF	REA	API	TI
7.7	0.4	83.6	129.6	0.29	6.3	22.9	14.7	14.2	40.2	0.69	-0.019	0.68	146.0	91.7	
85	60	35	35	45	65	60	55	30	45	15	75	55	35	25	

Big Stretchy bull with a 700 lb weaning weight. Dam breeds up on time every year and is maintaining a 367 day calving interval on her 6 calves.

## LRS CBL 38N

116

BD: 3/18/25 • ASA#: 4581253 • Tattoo: 38N  
3/4 SM 1/4 AN • Homozygous Polled • Homozygous Black

ASR AMERICAN PROUD H0301

sire: LRS DUTTON G11K

LRS MS EAGLE 983G

LRS ELEVATE 213B

dam: CBL MS ELEVATE E447

CBA MS TEN X A313



Act. BW	78
BW Ratio	103
Adj WW	730
WW Ratio	105
Adj YW	1273
YW Ratio	105
WDA	3.62
ADG	3.42
Adj SC	39.3

Rank	CE	BW	WW	YW	ADG	MCE	Milk	STAY	DOC	CW	Marb	BF	REA	API	TI
8.3	0.6	90.8	140.0	0.31	5.9	25.8	18.2	10.5	51.2	0.42	-0.024	0.94	141.5	89.7	
80	65	15	20	30	70	35	20	80	20	50	65	15	40	30	

This Dutton son was 730 lbs when we rounded him up this fall from a really productive coming 9 year old cow with a 104 WW ratio.



117

## LRS 9154N

BD: 3/7/25 • ASA#: 4522129 • Tattoo: 9154N  
PB SM • Homozygous Polled • Homozygous Black

GIBBS 7382E BROAD RANGE

sire: LRS RANGER 445K

LRS MS EAGLE 983G

HOOK'S EAGLE 6E

dam: LRS MS EAGLE 9154G

LRS MS DUAL FOCUS 213Z



Act. BW	82
BW Ratio	95
Adj WW	700
WW Ratio	99
Adj YW	1130
YW Ratio	91
WDA	3.24
ADG	2.71
Adj SC	36.2

Rank	CE	BW	WW	YW	ADG	MCE	Milk	STAY	DOC	CW	Marb	BF	REA	API	TI
12.6	-0.5	90.9	144.3	0.33	6.9	22.4	16.9	12.8	38.2	0.44	-0.061	1.13	163.5	98.3	
25	25	15	15	15	30	55	35	40	35	15	60	15	15	10	

Last chance for a Ranger calf today. Larger framed, long sided bull whose dam is a direct daughter of the old 213Z cow, best known as the dam of Elevate.

119

## LRS 1130N

BD: 3/14/25 • ASA#: 4522266 • Tattoo: 1130N  
3/4 SM 1/4 AN • Homozygous Polled • Homozygous Black

HOOK'S GALILEO 210G

sire: HA COVENANT 30K

HOOK'S CERES 11C

LRS TOPSHELF 902F

dam: LRS MS TOP SHELF 1130J

LRS MS PAYDAY 894F



Act. BW	88
BW Ratio	104
Adj WW	712
WW Ratio	100
Adj YW	1262
YW Ratio	99
WDA	3.52
ADG	3.47
Adj SC	37.6

Rank	CE	BW	WW	YW	ADG	MCE	Milk	STAY	DOC	CW	Marb	BF	REA	API	TI
11.9	0.4	88.6	136.8	0.30	7.4	24.4	17.2	15.3	50.9	0.63	-0.027	0.73	154.8	93.9	
50	60	20	25	35	45	45	30	20	20	20	65	45	20	20	

Dam is sired by Top Shelf and he covers all the bases important to us. Adequate growth and good for stayability, docility, marbling, and ends up top 20% for API.

121

## LRS 066N

BD: 3/19/25 • ASA#: 4522204 • Tattoo: 066N  
1/2 SM 1/2 AN • Homozygous Polled • Homozygous Black

DB ICONIC G95

sire: LRS GLENDIVE 8021L

LRS MS EAGLE 983G

MCCONNELL ALTITUDE 3114

dam: LRS MS ALTITUDE 066H

LRS MS TOPGRADE 303A



Act. BW	90
BW Ratio	105
Adj WW	707
WW Ratio	100
Adj YW	1353
YW Ratio	109
WDA	3.79
ADG	4.07
Adj SC	40.3

Rank	CE	BW	WW	YW	ADG	MCE	Milk	STAY	DOC	CW	Marb	BF	REA	API	TI
11.4	-1.6	77.9	131.4	0.33	4.3	21.6	18.5	15.8	54.5	0.77	-0.009	0.49	165.1	93.0	
55	25	50	35	20	90	70	15	15	15	10	85	85	15	20	

I always save a bull that could be higher to be the last lot in the sale. 80% of our lot #'s are random anyways. Natural born calf out of the 066H donor cow and sired by LRS Glendive. He will get the job done and is a combination of our 2 most prolific cow families.

# Thank You!

We need to thank our family and friends

that help throughout the year whenever we call and ask...

Lyle Armstrong, Gary Miller, Jim Trangmoe, Dave Barnick, Alan Mcrae, Doug Goroski, and Gary Arneson. Arvid Corneliusen and Melvin Gaub for helping take care of fences and keeping an eye on the cows and calves all summer. Thanks to Vic's Vittles and Jacob Lundstrum for the great meals. The crew at Bravera Bank.

118

## LRS CBL 36N

BD: 3/18/25 • ASA#: 4581245 • Tattoo: 36N  
1/2 SM 1/2 AN • Homozygous Polled • Homozygous Black

EGL FIRESTEEL 103F

sire: CCR FIRE POWER 8081J

CCR MS COMMAND 8081F

HOOK'S BALTIC 17B

dam: CBL MS BALTIC H380

CBA QUEEN GAME ON Z222



Act. BW	73
BW Ratio	97
Adj WW	686
WW Ratio	99
Adj YW	1356
YW Ratio	112
WDA	3.71
ADG	4.21
Adj SC	39.8

Rank	CE	BW	WW	YW	ADG	MCE	Milk	STAY	DOC	CW	Marb	BF	REA	API	TI
10.5	2.2	82.0	132.8	0.32	7.1	20.8	25.3	14.7	51.4	0.43	-0.047	0.94	154.4	83.3	
65	90	40	30	25	50	80	1	25	20	45	35	15	25	50	

Firepower son who is one of the larger framed bulls in the offering. Great stayability and REA and carries the G+ stamp.

120

## LRS CBL 29N

BD: 3/16/25 • ASA#: 4581242 • Tattoo: 29N  
1/2 SM 1/2 AN • Homozygous Polled • Homozygous Black

EGL FIRESTEEL 103F

sire: CCR FIRE POWER 8081J

CCR MS COMMAND 8081F

LRS FALCON 442G

dam: CBL MS J81

CBL MS INNOVATION E277

Act. BW	82
BW Ratio	110
Adj WW	742
WW Ratio	107
Adj YW	1217
YW Ratio	100
WDA	3.46
ADG	3.00
Adj SC	39.2

Rank	CE	BW	WW	YW	ADG	MCE	Milk	STAY	DOC	CW	Marb	BF	REA	API	TI
5.7	0.1	82.2	132.1	0.31	5.2	28.5	17.5	14.6	53.4	0.67	-0.028	0.94	148.9	91.3	
95	55	35	30	30	80	15	25	25	15	20	65	15	30	25	

Dam has a 112 nursing ratio on her first 3 calves so it is no surprise he weaned at almost 750 lbs. Her first 2 daughters were retained as well.



HARPER WAS THE GRAND CHAMPION OVERALL  
JUNIOR SHOWMAN AT FAIR

Kristin Aus, Marta Asche and Devyn Kilburn for helping clerk on sale day. Janet Rippe of Rippe Solutions. Will Malcolm and Sleeping Giant Genetics for the embryo work. Bobby Wellner Cattle Services for clipping bulls. Rod and Marta Asche (Cracker Box Livestock) for being a great partner on some of the bulls in the sale. CHS Farmers Elevator for sponsoring the sale day meal. And last but not least, Emily Brinkman at Generation 6 Marketing for not only the catalog but assisting with all our ads and marketing efforts.

# LASSLE RANCH SIMMENTALS

## Bred Heifers

### Lot 122

As mentioned in the welcome letter we once again are selling some bred heifers. We kept and bred more replacement heifers than we would truly need, with the full intention that if breed up was good across the board, we would again offer a group for sale. We synchronize all the heifers and time breed them AI. We know that by time breeding them, we do give up some first service conception rate, and so to make the sort on these bred heifers simple, we again are selling the bred heifers that did not settle on the first service AI. We bred 83 heifers, had 4 opens, and are letting these 14 go. No other sort was done beside due date. These heifers have not been treated any differently than the rest of our heifers that we are retaining. They were all kept at home until August and then were hauled to Wibaux and spent the fall on grass before returning home in November and have been on the same feed as the others. The Heifers calving date and sex of calf is listed to the best of our knowledge. We would ask that these heifers get taken home on sale day or picked up as soon as possible after the sale. **All heifers are bred to either Bridle Bit All Terrain L3110 (ASA # 4211473) or LRS 9117L (ASA # 4199821). Both bulls were turned out together with the heifers following AI. DNA can determine the sire of the calf if necessary.**

### Lot 123

## 122 LRS MS POUNDER 438M

BD: 3/4/24 • ASA#: 4359421 • Tattoo: 438M  
1/2 SM 1/2 AN • Homozygous Polled • Homozygous Black

CCR PAY DIRT 2340C

sire: CCR POUNDER 2045F

CCR MS 707 COWBOY 4123B

LD CAPITALIST 316

dam: LRS MS CAPITALIST 0140H

LRS MS CLASS ACT 437B



Act. BW	86
BW Ratio	105
Adj WW	551
WW Ratio	107
Adj YW	838
YW Ratio	100
WDA	
ADG	
Adj SC	

Rank	CE	BW	WW	YW	ADG	MCE	Milk	STAY	DOC	CW	Marb	BF	REA	API	TI
75	9.0	0.6	91.7	151.3	0.37	6.7	24.1	18.2	13.8	62.8	0.34	-0.011	0.79	139.7	88.2

This pounder bred heifer is a daughter of the 437B cow, who is the dam of 983G. Cow family royalty on right here. Moderate and super broody female who ranks in the top 15% of the breed for both WW and YW and also has a great stayability EPD. Wide body female who just looks like she will be a real momma cow. Dam is a really productive Capitalist 316 daughter who is also the dam of the heifer bull selling as lot 113. Sells with a Heifer calf and due approximately March 20th, 2026.

## 123 LRS MS AMERICAN PROUD 470M

BD: 3/10/24 • ASA#: 4359451 • Tattoo: 470M  
3/4 SM 1/4 AN • Homozygous Polled • Homozygous Black

ASR AMERICAN PATRIOT F843

sire: ASR AMERICAN PROUD H0301

ASR LITTLE DESI D6273

LRS TOPSHELF 902F

dam: LRS MS TOP SHELF 136J

LRS MS CAPITALIST 712E



Act. BW	92
BW Ratio	114
Adj WW	666
WW Ratio	116
Adj YW	979
YW Ratio	115
WDA	
ADG	
Adj SC	

Rank	CE	BW	WW	YW	ADG	MCE	Milk	STAY	DOC	CW	Marb	BF	REA	API	TI
85	8.1	0.6	95.2	149.0	0.34	4.6	27.1	18.0	13.4	44.8	0.13	-0.033	0.85	127.4	85.5

Big time growth and power bred heifer. She is larger framed and really attractive. She herself had a 116 WW ratio and 115 YW ratio, no surprise as her Top Shelf sired dam has a 112 nursing ratio on her first 2 calves. Due March 19th 2026 with a called bull calf.



Lot 124



LRS 9117L  
SERVICE SIRE OF LOTS 122-135



BRIDLE BIT ALL TERRAIN L3110  
SERVICE SIRE OF LOTS 122-135



Lot 125

124

## LRS MS VARSITY 463M

BD: 3/9/24 • ASA#: 4359445 • Tattoo: 463M  
3/4 SM 1/4 AN • Homozygous Polled • Homozygous Black

CCR POUNDER 2045F

sire: CCR VARSITY 4112H

CCR MS FRONTIER 4112B

ASR AMERICAN PROUD H0301

dam: LRS MS AMERICAN PROUD 2106K

LRS MS ICONIC 997G



Act. BW	74
BW Ratio	93
Adj WW	546
WW Ratio	95
Adj YW	820
YW Ratio	98
WDA	
ADG	
Adj SC	

Rank	CE	BW	WW	YW	ADG	MCE	Milk	STAY	DOC	CW	Marb	BF	REA	API	TI
20	15.0	-3.4	77.3	117.8	0.25	8.0	21.2	24.7	15.9	39.6	0.42	-0.020	0.34	164.1	86.1
20	10	55	60	70	35	75	1	15	45	50	75	95	15	40	

When we said the sort was simple, we meant it. 463M is a direct daughter of the 997G donor cow who has the big flush of Discipline bulls in the sale. Sired by CCR Varsity, who was our pick of heifer bulls years back at the cow camp sale. She is a calving ease bred heifer and could be mated to make calving ease bulls, or turn some power bulls on her. top 1% stayability and top 15% API. She is one who can be mated in a lot of different ways and from a proven cow family. Due April 3rd, 2026 with no sex called on the calf.

125

## LRS MS COVENANT 449M

BD: 3/5/24 • ASA#: 4359432 • Tattoo: 449M  
PB SM • Heterozygous Polled • Homozygous Black

HOOK'S GALILEO 210G

sire: HA COVENANT 30K

HOOK'S CERES 11C

RBS BOISE B63

dam: LRS MS BOISE 834F

LRS MS SUREBET 104Y



Act. BW	80
BW Ratio	96
Adj WW	534
WW Ratio	103
Adj YW	797
YW Ratio	95
WDA	
ADG	
Adj SC	

Rank	CE	BW	WW	YW	ADG	MCE	Milk	STAY	DOC	CW	Marb	BF	REA	API	TI
50	9.8	-0.6	87.7	131.7	0.28	6.1	25.6	18.5	15.0	40.2	0.53	-0.129	1.24	166.3	98.9
50	20	25	30	35	35	45	35	20	15	30	10	2	4	10	10

larger framed HA Covenant daughter whose dam is a daughter of 104Y, who was the dam of LRS Top Ten. She had a weaning weight ratio of 103. Check out her Carcass trait EPDs and she combines that with good stayability and docility to be in the top 10% for API and TI. She is due March 24th, 2026 with a called bull calf.

# LASSLE RANCH SIMMENTALS



Lot 126



Lot 127



Lot 128

## LRS MS DUTTON 457M

126

BD: 3/7/24 • ASA#: 4359439 • Tattoo: 457M  
PB SM • Homozygous Polled • Homozygous Black

ASR AMERICAN PROUD H0301

sire: LRS DUTTON 611K

LRS MS EAGLE 983G

HOOK'S BALTIC 17B

dam: LRS MS BALTIC 802F

LRS MS RANGE BOSS 621D



Act. BW	82
BW Ratio	98
Adj WW	520
WW Ratio	91
Adj YW	812
YW Ratio	96
WDA	
ADG	
Adj SC	

Rank	CE	BW	WW	YW	ADG	MCE	Milk	STAY	DOC	CW	Marb	BF	REA	API	TI
55	9.4	0.9	94.2	150.5	0.35	2.1	14.1	17.8	11.6	50.9	0.52	-0.041	0.99	163.4	98.4

LRS Dutton purebred out of an 8 year old Baltic daughter. Larger framed, good footed heifer who is really balanced. Top 10% for WW, YW, and marbling and puts that together to rank in the top 15% for API. Due March 18th, 2026 with a called heifer calf.

## LRS MS POINT TAKEN 4133M

127

BD: 4/7/24 • ASA#: 4359631 • Tattoo: 4133M  
3/4 SM 1/4 AN • Homozygous Polled • Heterozygous Black

S POWERPOINT 843

sire: KS POINT TAKEN H579

KS FANNIE F74

NLC GEN TEN 82E

dam: LRS MS NOODLES 067H

LRS MS JOY 661D

Act. BW	88
BW Ratio	105
Adj WW	604
WW Ratio	102
Adj YW	850
YW Ratio	103
WDA	
ADG	
Adj SC	

Rank	CE	BW	WW	YW	ADG	MCE	Milk	STAY	DOC	CW	Marb	BF	REA	API	TI
90	7.4	3.1	85.0	123.2	0.24	4.4	28.3	12.4	13.6	28.1	0.28	-0.041	0.65	112.9	79.3

Harper's heifer out of her cow Noodles. She is heterozygous Black and offers an outcross pedigree to both red and black cattle. She ratioed 102 for WW and 103 for YW and her cow family is performance oriented. Would be from the same cow family as the lot 51 in the bull sale who is out of a maternal sister. Her sire originated from Kenner Simmentals. Due April 5th, 2026 with no called sex on the calf.

## LRS MS POINT TAKEN 482M

128

BD: 3/14/24 • ASA#: 4359462 • Tattoo: 482M  
5/8 SM 3/8 AN • Homozygous Polled • Homozygous Black

S POWERPOINT 843

sire: KS POINT TAKEN H579

KS FANNIE F74

HOOK'S EAGLE 6E

dam: LRS MS EAGLE 902G

LRS MS GAME PLAN 768E

Act. BW	74
BW Ratio	89
Adj WW	571
WW Ratio	100
Adj YW	800
YW Ratio	95
WDA	
ADG	
Adj SC	

Rank	CE	BW	WW	YW	ADG	MCE	Milk	STAY	DOC	CW	Marb	BF	REA	API	TI
15	16.2	-2.9	73.2	111.2	0.24	8.3	26.6	12.4	14.0	17.4	0.36	0.015	0.44	135.0	82.2

Point taken daughter out of a really good Hooks Eagle dam. Another one with calving ease EPDs that will allow you to mate her and make heifer bulls or can go any direction you want to. Really pretty fronted heifer with a splash of white underneath her. She is due March 13th, 2026 with a called heifer calf.

129

## LRS MS ANTHEM 435M

BD: 3/4/24 • ASA#: 4359419 • Tattoo: 435M  
3/4 SM 1/4 AN • Homozygous Polled • Homozygous Black

TEHAMA PATRIARCH F028

sire: CCR ANTHEM 3355J

CCR MS 5161 COWBOY 8636F

HOOK'S BALTIC 17B

dam: LRS MS BALTIC 048H

LRS MS ELEVATE 605D



Act. BW	80
BW Ratio	98
Adj WW	505
WW Ratio	98
Adj YW	857
YW Ratio	103
WDA	
ADG	
Adj SC	

Rank	CE	BW	WW	YW	ADG	MCE	Milk	STAY	DOC	CW	Marb	BF	REA	API	TI
EPDs	12.8	-0.6	78.3	130.6	0.33	9.5	20.9	22.8	15.0	49.4	0.30	-0.040	0.90	148.9	81.4
	40	45	50	35	20	15	80	2	20	25	65	50	20	30	55

We think the Anthems are going to make great cows and would expect 435M to last for many years with her top 1% stayability ranking. She herself ratioed 103 for yearling weight and is quiet, easy to look at heifer in the pen. She is due April 8th, 2026 with no sex called on the calf.



Lot 129

130

## LRS MS ANTHEM 467M

BD: 3/10/24 • ASA#: 4359449 • Tattoo: 467M  
1/2 SM 1/2 AN • Homozygous Polled • Homozygous Black

TEHAMA PATRIARCH F028

sire: CCR ANTHEM 3355J

CCR MS 5161 COWBOY 8636F

TJ FLAT IRON 259G

dam: LRS MS FLATIRON 259K

LRS MS TEN X 401B



Act. BW	74
BW Ratio	93
Adj WW	531
WW Ratio	92
Adj YW	761
YW Ratio	91
WDA	
ADG	
Adj SC	

Rank	CE	BW	WW	YW	ADG	MCE	Milk	STAY	DOC	CW	Marb	BF	REA	API	TI
EPDs	16.9	-4.0	65.9	105.2	0.25	9.6	26.8	20.2	7.8	40.3	0.61	0.017	0.41	164.5	85.2
	15	10	90	80	70	15	25	10	95	45	25	95	90	15	45

Anthem sired bred heifer whose Flat Iron dam is a direct daughter of the 401B cow, who is also the dam of LRS Badlands. Top 10% CE and BW EPDs, she is a calving ease bred heifer and carries the ACE Stamp to go with it. Top 10% stayability and top 15% API. She is due March 16th, 2026 with a called heifer calf.



Lot 130

131

## LRS MS 030K 4101M

BD: 3/18/24 • ASA#: 4359547 • Tattoo: 4101M  
5/8 SM 3/8 AN • Homozygous Polled • Homozygous Black

GIBBS 7382E BROAD RANGE

sire: LRS 030K

LRS MS FRANCHISE 030H

LRS BADLANDS 401F

dam: LRS MS BADLANDS 080H

LRS MS EFFECTIVE 7109E

Act. BW	78
BW Ratio	96
Adj WW	584
WW Ratio	102
Adj YW	854
YW Ratio	101
WDA	
ADG	
Adj SC	

Rank	CE	BW	WW	YW	ADG	MCE	Milk	STAY	DOC	CW	Marb	BF	REA	API	TI
EPDs	14.9	-1.5	74.7	123.0	0.30	6.8	23.4	13.6	11.9	35.4	0.23	-0.051	1.05	130.2	79.8
	25	30	65	50	35	55	55	65	60	80	25	80	10	60	60

4101M ratioed 102 for WW and 101 for YW. Her sire 030K was a Gibbs road Range son we turned out for pasture duty a couple years and was a breeding machine. Her dam is a hard working cow who herself has a nursing ratio of 106 on her first 4 calves. She is due March 19th, 2026 with a called heifer calf.



Lot 131

# LASSLE RANCH SIMMENTALS



## LRS MS ANTHEM 475M

132

BD: 3/11/24 • ASA#: 4359634 • Tattoo: 475M  
3/4 SM 1/4 AN • Homozygous Polled • Homozygous Black

TEHAMA PATRIARCH F028

sire: CCR ANTHEM 3355J

CCR MS 5161 COWBOY 8636F

RBS BOIXE B63

dam: LRS MS HERSHEY 991G

LRS MS NIGHTRIDE 6008D

Act. BW	82
BW Ratio	98
Adj WW	557
WW Ratio	
Adj YW	788
YW Ratio	
WDA	
ADG	
Adj SC	

Rank	CE	BW	WW	YW	ADG	MCE	Milk	STAY	DOC	CW	Marb	BF	REA	API	TI
EPDs	15.7	0.2	78.7	108.5	0.19	10.9	20.6	15.7	15.5	41.7	0.42	-0.032	0.84	139.4	82.5
	20	60	50	75	95	4	80	45	20	40	50	50	25	45	55

3/4 blood heifer with a touch of white on her sired by our herd sire Anthem. She is a more moderate heifer, really attractive and soft made. If you check the new feed intake EPD published by the ASA, she ranks in the top 5% of the breed for DMI. She is due April 3rd, 2026 with no sex called on the calf.

## LRS MS WACO 417M

133

BD: 2/24/24 • ASA#: 4359402 • Tattoo: 417M  
5/8 SM 3/8 AN • Homozygous Polled • Homozygous Black

CCR ABILENE 6018C

sire: CCR WACO 4142G

CCR MS CATALYST 4142B

LRS TOPSHELF 902F

dam: LRS MS TOP SHELF 295K

LRS MS 3324-793E

Act. BW	82
BW Ratio	103
Adj WW	623
WW Ratio	
Adj YW	847
YW Ratio	
WDA	
ADG	
Adj SC	

Rank	CE	BW	WW	YW	ADG	MCE	Milk	STAY	DOC	CW	Marb	BF	REA	API	TI
EPDs	10.3	0.0	74.6	112.2	0.23	5.8	21.3	14.2	17.8	50.7	0.49	-0.061	0.78	134.4	82.3
	65	55	65	70	80	70	75	60	4	20	40	15	35	55	55

Nice bred heifer sired by the calving ease specialist Waco. Outcross pedigree gives a lot of different mating options for this easy fleshing super quiet Top Shelf granddaughter. She is due March 19th, 2026 with a called bull calf.



## LRS MS PRIME TIME 4120M

134

BD: 3/31/24 • ASA#: 4359564 • Tattoo: 4120M  
5/8 SM 3/8 AN • Heterozygous Polled • Homozygous Black

CCR POUNDER 2045F

sire: CCR PRIME TIME 6477H

CCR MS 3370 BOLDR 6477D

LRS ADJUSTER 793Y

dam: LRS MS ADJUSTER 425B

LRS MS FINAL ANSWER 902W



Act. BW	92
BW Ratio	111
Adj WW	584
WW Ratio	102
Adj YW	877
YW Ratio	104
WDA	
ADG	
Adj SC	

Rank	CE	BW	WW	YW	ADG	MCE	Milk	STAY	DOC	CW	Marb	BF	REA	API	TI
EPDs	6.0	3.2	88.9	144.9	0.35	6.8	25.0	11.6	16.9	48.4	0.06	-0.035	0.70	101.7	76.3
	95	95	20	15	15	55	40	80	10	25	95	50	50	95	75

Her dam made it to 11 years old here and we did sell her this past fall. She was sired by LRS Adjuster whose daughters did a great job for us over the years. She is heterozygous polled and ratioed 102 for WW and 104 at a year. Great growth EPDs and gets the ATM stamp to go with them. She is due March 19th, 2026 with a called bull calf.

## LRS MS BEDROCK 440M

135

BD: 3/5/24 • ASA#: 4359423 • Tattoo: 440M  
1/4 SM 1/2 AN 1/4 CS • Homozygous Polled • Homozygous Black

TEHAMA PATRIARCH F028

sire: CCR BEDROCK 5171J

CCR MS 2073 COWBOY 5171C

HOOK'S BALTIC 17B

dam: LRS MS BALTIC 0135H

Act. BW	78
BW Ratio	96
Adj WW	579
WW Ratio	101
Adj YW	810
YW Ratio	96
WDA	
ADG	
Adj SC	

Rank	CE	BW	WW	YW	ADG	MCE	Milk	STAY	DOC	CW	Marb	BF	REA	API	TI
EPDs	10.8	-1.1	74.6	116.9	0.26	7.6	21.8	13.8	15.4	42.7	0.58	0.026	0.32	136.1	82.5
	60	35	65	60	60	40	70	65	20	40	25	99	95	50	55

Long sided, pretty made CCR Bedrock daughter. She is low percentage heifer as we did have a DNA issue with her dam, who we do know was sired by Baltic. She still made the replacement pen as a calf as she carries all the right traits we look for in a cow, and can be bred to the right bulls to make higher percentage cattle. She is due April 5th, 2026 with no sex called on the calf.

LRS *Lawman*

PB SM • ASA# 4359513 • HOMO BLACK • HOMO POLLED  
LRS RANGER 445K X NLC GEN TEN 82E

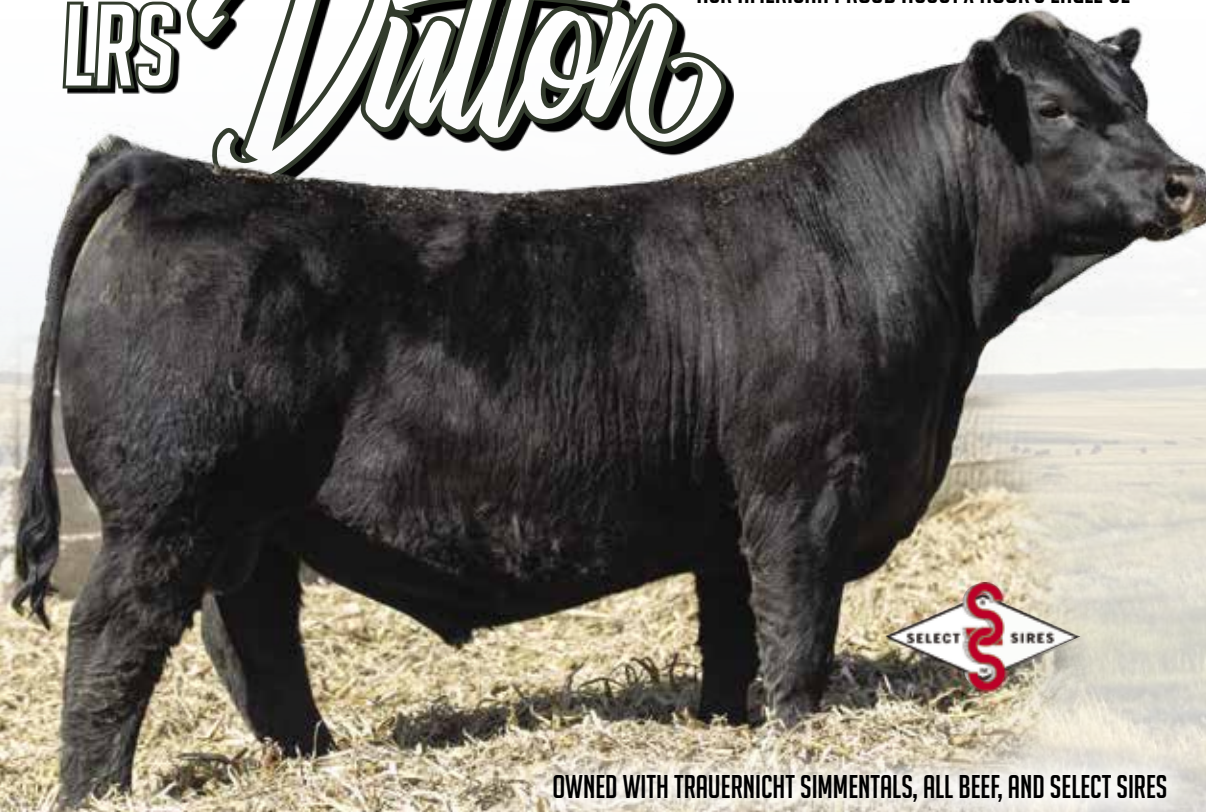


STgenetics®

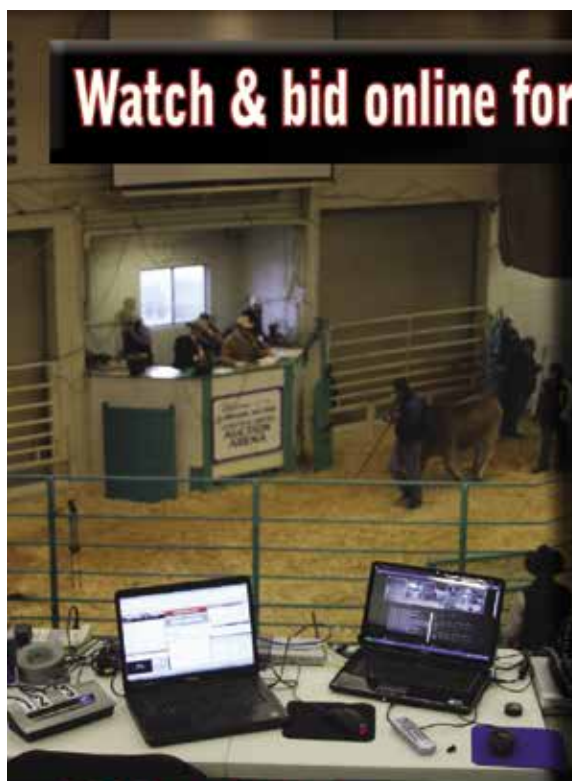
OWNED WITH CK CATTLE AND ST GENETICS

LRS *Dutton*

PB SM • ASA# 4046516 • HOMO BLACK • HOMO POLLED  
ASR AMERICAN PROUD H0301 X HOOK'S EAGLE 6E



OWNED WITH TRAUERNICHT SIMMENTALS, ALL BEEF, AND SELECT SIRES



Watch & bid online for **FREE** at

**DVAuction**  
Broadcasting Real-Time Auctions

**Can't make the sale? Bid from home with DV Auction's "real-time" internet bidding service!**

Buying online is as easy as 1, 2, 3...

1. Create an account at [www.dvauction.com](http://www.dvauction.com) under the "register" tab
2. Apply for bidding approval by clicking on the "details" tab at least 24 hours prior to the auction-a DV representative will notify you once you have been approved
3. Tune in for the sale and make you purchases!

After the sale, contact the sale manager or owner to arrange transportation and payment. **High speed internet** is required for successful bidding-be sure to check the lag-time monitor in the top left corner to ensure real-time broadcasts.

**Proxy Bidding**-if you can't make time to watch the sale, register a proxy bid and let our system represent your bid while you're away. Look for the "proxy bid" tab on the auction listing, and fill in your maximum bids. We'll handle the rest!

**Having troubles?** During the auction, you can type a message to the operator at any time for assistance. Our full-time support team can also always be reached at (402) 474-5557.



**DVAuction**  
Broadcasting Real-Time Auctions

Full Service Livestock Marketing

Video - Photography - The Stock Exchange - Ring Service - Banner Ads - Onsite Viewing Service

## HOW DOES A GENOMIC TEST BENEFIT OUR CUSTOMERS?

We have been doing Genomic testing here at LRS for years and taking advantage of all the programs available through the American Simmental Association. Our entire cowherd and every calf born here gets a genomic test – even the culls. **Every bull that sells has genomically enhanced EPD's.** This does not replace phenotypic data, it enhances it. We still collect all the phenotypic traits that we can: Birthweight, Calving ease, weaning weights, yearling weights, Mature Cow weights every fall, Body condition scores, individual carcass data. The phenotypic data is irreplaceable and essential to work hand in hand with the DNA samples to enhance their EPD's.

**How does it benefit you:** It creates a more accurate prediction with a higher accuracy EPD because it combines not only the animals phenotypic data (BW, CE, WW, YW etc..) and pedigree, but also takes into account what gene markers the animal has that science has proven to affect certain traits. It also provides parentage verification so you can be assured the parentage is right. It is like getting an entire calf crop worth of information for bulls, before they even breed a cow.

TRAIT	PROGENY	TRAIT	PROGENY
Calving ease	25+	Stayability	15
Maternal calving ease	4	Carcass weight	6
Birth weight	22	Marbling	10
Weaning weight	25+	Ribeye area	8
Yearling weight	25+	Back fat	11
		Docility	25+

## IMPROVED BUYING CONFIDENCE WITH GREATER GENOMIC ASSURANCE

The 3 Accreditation Logos below are designed to simplify bull selection and improve buyer confidence by more accurately describing the genetics offered and by reducing risk. What this means to you as a customer is a much greater assurance that you are getting both what you want and need from the genetics you purchase. What it means to your seedstock provider is access to RightMate technology that simply sets them apart from the rest of the industry.

**ACCREDITED CALVING EASE** – Simply find bulls with the ACE logo for third party Accredited, secure Calving Ease bulls. Though we have had tools in the past to assist in choosing heifer bulls, we've never had one nearly this effective. The reduced risk that comes with this genomic certification will simply make your decisions easier and your heifer calving season more successful. Purchase special purpose ACE bulls with confidence. They will deliver consistent and predictable calving ease.



**ACCREDITED TERMINAL MATE** – Just like an ATM machine makes it simpler to access your cash, the ATM Logo highlights bulls accredited to generate extra cash income as soon as your next calf crop! These bulls are meant specifically to use only on mature cows and for the purpose of adding performance, pay weight and end product value to market.



**ACCREDITED GENOMIC PLUS** – For the majority of producers who simply need consistent and balanced genetic improvement, without genomic setbacks, G+ Accredited bulls should be on your list for premium purchase. These sires will absolutely move you forward for both cost reduction and income producing traits and substantially reduce risk when compared to all other evaluation programs. It's simple, the right genes are in these bulls to help secure a profitable future and the they have great EPDs to match!



**RightMate**  
powered by TOP GENOMICS

# Terms & Conditions

## TERMS AND CONDITIONS

1. Terms of the sale are cash or check at the time of the sale unless other arrangements are made prior to sale.
2. Each animal becomes the property of and therefore is also the risk of the purchaser as soon as it is sold; except it shall be the obligation of the seller to see that animals are fed and cared for free of charge to purchaser, until loaded for shipment or until the expiration of twenty-four hours after the sale, whichever occurs first. We guarantee the cattle to be healthy sale day.
3. We will abide by the rules set forth by the American Simmental Association.
4. As we have no control over the acts of God, we cannot guarantee these cattle against death loss, injury or sickness. We guarantee cattle to be healthy sale day.
5. Every animal selling is guaranteed be free of all known genetic defects at the time of the sale either by know genetic defect free pedigree or by negative DNA test. Lassle Ranch Simmentals is not liable for any genetic defects not recognized by the ASA or such defect that has no available commercial DNA test at the time of the sale.

We will keep the website updated with any information we get between the time the catalog goes to print and sale day.  
[www.lassleranchsimmentals.com](http://www.lassleranchsimmentals.com)

Cattle are available for your inspection any time. Feel free to come ahead of sale day.

## BUYER VOLUME DISCOUNTS

We will be offering Discounts for volume bull buyers:

- 3 head – 3%
- 4 head – 4%
- 5 or more head 5%

## ANNOUNCEMENTS

All announcements and changes made by the auctioneer will take precedence over printed material. Anyone attending the sale attends at their own risk. Lassle Simmentals or any of the sale force will not be responsible for any personal injury or loss for attending the sale.

## SIGHT UNSEEN PURCHASES

We guarantee all sight unseen purchases. Call ahead of time and we will go over the offering. You can leave a bid with us or a representative. You will be treated as if you are here. A video of sale cattle is available on [www.lassleranchsimmentals.com](http://www.lassleranchsimmentals.com)

## DELIVERY

We will offer free delivery within 400 mile radius of Glendive, MT. Other delivery arrangements will be made as economically as possible, based upon the volume of the purchase.

## AFTER SALE CARE

\$100.00 off cattle that are taken sale day. Free feed on any bull until the first of April. On the bulls that we winter, we will have them fertility tested and fertility certificates issued. Insurance will be available sale day – we encourage you to insure bulls that we winter.

## SEMEN INTEREST

Lassle Ranch Simmentals is selling all bulls in their entirety. Full possession, and 100% semen interest in all bulls will be sold. Lassle Ranch Simmentals does reserve the right to in herd use semen on any bull in the sale, at the cost of collection. Should the need arise for us to collect semen on a bull in your possession, it would be done at our expense and your convenience

## FULL PURCHASE VALUE EXTENDED WARRANTY ON SALE BULLS

Every bull selling carries a 100% guarantee extended warranty for one breeding season provided the bull is managed properly and acceptable nutritional physical health. In the event a customer has any problem in with a bull (health, injury or death) prior to or during the bulls first breeding season the customer should immediately contact Lassle Ranch Simmentals to report a claim. A veterinarian's statement of the problem will be required and Lassle Ranch reserves the right to have the bull returned if deemed necessary. A replacement bull of mutually agreed upon quality will be provided if Lassle Ranch has one available. In the event a satisfactory replacement is not available, the customer will be given a full credit (minus salvage value) to be used in a future Lassle Ranch Sale. LRS will not be held responsible under any circumstances for any settlement amount exceeding the purchase price of bull. No one can guarantee that every animal will perform perfectly, but at Lassle Ranch Simmentals we can guarantee that we will make things right if they do not.

## TESTICLE MEASUREMENTS

The scrotal circumference of each bull was tape-measured the week before Christmas while clipping the bulls. The scrotal measurement were adjusted to yearling and sometimes will vary one way or another as actual yearlings. We guarantee our bulls 100% for fertility – unless damage is induced at your ranch – and then it's out of our control.

## RECOMMENDATIONS FOR SCROTAL CIRCUMFERENCE

MONTHS OF AGE	12-14	15-20	21-30	30+
SCROTAL CM	35	37	39	40 - EXCELLENT
	30-35	31-37	32-39	33-40 - GOOD
	30	31	32	33 - POOR

## SUGGESTED GUIDELINES FOR USING YEARLING BULLS

We are firm believers in the use of yearling bulls and feel it is one of the best years of their lives. It is a time when they are easy to manage and their only concern is breeding cows. We have found that yearling bulls that are managed carefully during the second year of their lives, not only do well, but they will perform better over time. Below are some suggested guidelines for the care of yearling bulls.

- Upon deliver to your ranch, keep yearling bulls separate from older bulls and feed them a maintenance ration of 5-8 lbs per head of grain and free choice hay. Reduce the amount of grain fed gradually, so that bulls are on straight hay or grass 2-4 weeks prior to the breeding season.
- Where possible try to limit the bulls and put them in separate pastures with plenty of good quality grass. It is best to achieve the growth and strength to compete with older bulls for feed and space.
- You will see the benefit of a little added cost and care of feeding a yearling bull by probably two or three more years of service from a well managed and healthy bull.

## UNDERSTANDING LOT NUMBER COLOR CODES

Green Ear Tags – Purebred Simmental  
Blue Ear Tags – 3/4 Simmental  
Yellow Ear Tags – 5/8 or 1/2 Simmental

Catalog designed by



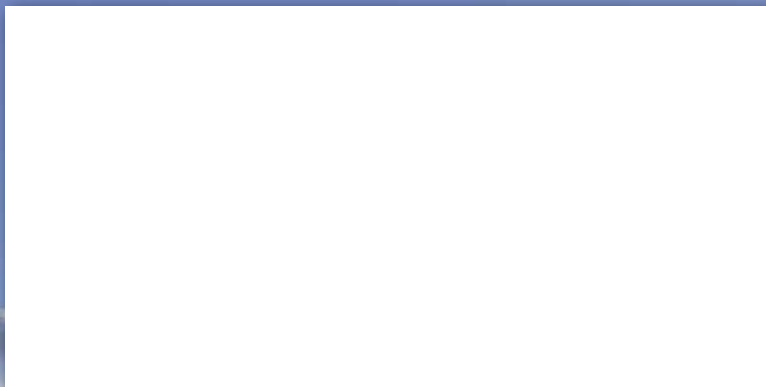
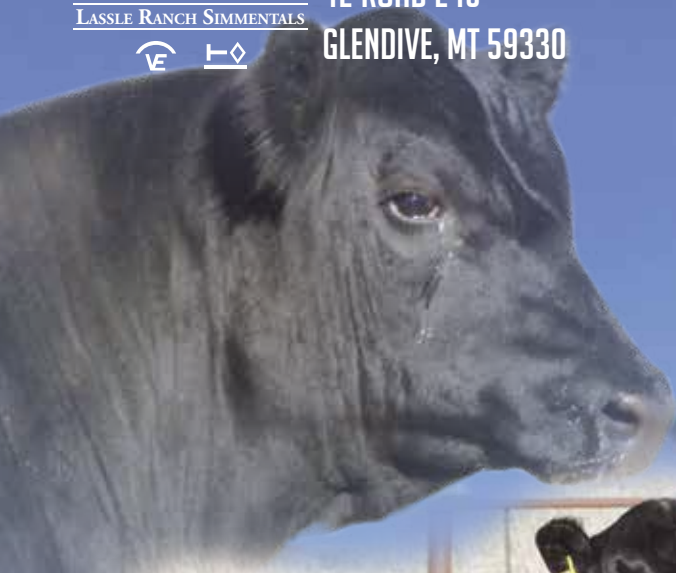
[www.generation6.co](http://www.generation6.co)

# LRS

LASSLE RANCH SIMMENTALS



LASSLE RANCH SIMMENTALS  
42 ROAD 245  
GLEN DIVE, MT 59330



*Lot 40*

*Lot 28*



*Lot 1*

*Lot 18*

**JOIN US FOR OUR 33<sup>RD</sup> ANNUAL BULL SALE!**  
**FEBRUARY 12, 2026 AT THE RANCH**

**Selling 120 Simmental & SimAngus Bulls**  
**14 Bred Heifers from the Heart of the Herd**

**FREE DELIVERY • BULLS AVAILABLE TO VIEW ANYTIME**  
**SIGHT UNSEEN & FIRST YEAR BREEDING SEASON GUARANTEES**



PRINTED BY  
**LIVESTOCK  
DIRECT**  
[www.livestockdirect.com](http://www.livestockdirect.com)