

LRS

LASSLE RANCH SIMMENTALS



Bulls backed by
REAL WORLD COWS!



ANNUAL BULL SALE

FEBRUARY 9, 2023 // 1:00 PM MST // AT THE RANCH // GLENDIVE, MT

LASSLE RANCH SIMMENTALS

Welcome!

Welcome to our 30th annual bull sale. It seems like just yesterday we were preparing for our 25th sale and now we are at 30 years of providing Simmental genetics to the commercial cattleman. The cattle sure look different than they did when Clay and his dad got started in this business, but what hasn't changed is our belief in the mother cow and eagerness to provide genetics that keep commercial cattleman in business and profitable for years to come.

Our bulls are backed by real world cows, and that has been a constant around here since we started in this industry. We are proud of our cowherd and what they have been able to accomplish not only for us, but for our customers. We expect them to work for us with good feet, good udders, good dispositions, breed on time and bring a big calf home in the fall. Longevity and fertility are two of the biggest drivers in commercial cowherd profitability and it doesn't matter what their pedigree is or how good their EPDs are, they need to earn their place in our cowherd. They need to work for us, so their genetics work for you.

We continue to pursue different avenues to enhance the bulls that we offer to ensure that you are buying more than a bull, but a bull that you can be confident will provide genetics to keep you in the game for years to come. All bulls have genomically enhanced EPDs to provide a more accurate makeup of his genetic potential. This not only verifies his parentage but adds accuracy to his EPDs. We finished a load of heifers this past summer which provided valuable carcass data on our cowherd and a real-world test to what our genetics are doing at the next level.

Coming off the drought of 2021, we battled through a cold and wintery calving season, as did most of you, and were blessed with spring moisture to get the grass going again before it became hot and dry the second half of summer. We weaned the bull calves as late as we have in years, the first full week of October. Winter set in early in November and we have had what felt like 90 days of winter in November and December alone with the cold and snow. The bulls in the offering have done well considering this has been as hard of a feeding period as we have had in years. We have again sorted them hard and culled through them multiple times to bring only the best for your appraisal. They are a sound, uniform group, and ready to go to work for you.

We hope you can be with us on February 9th but know that sometimes that is not possible. We will again be utilizing DVAuction.com as our platform for online bidding. All the bull videos will be posted there for viewing ahead of the sale. We will also have phones available sale day and a great sales staff on-site.

In closing, thank you again for your interest. The ranch is always open to view the bulls or the cowherd behind them. We do offer a \$250 sale credit for viewing the bulls ahead of the sale. If you have any questions, please do not hesitate to give us a call. We look forward to seeing you on the 9th!

Clay and Marianne Lassle
Ryan, Sarah, Grace, and Harper Thorson



Clay and Marianne Lassle and Grandkids



Ryan, Sarah, Grace, and Harper Thorson

LRS

LASSLE RANCH SIMMENTALS



FEBRUARY 9, 2023 // 1:00 PM MST AT THE RANCH // GLENDDIVE, MT

CONTACT INFORMATION

Clay & Marianne Lassle
42 Road 245 | Glendive, MT 59330
Home 406-486-5584 | lrsbeef@midrivers.com
Sarah & Ryan Thorson 406-694-3722

SALE SCHEDULE & LOCATION

Thursday, February 9, 2023 | 1:00 PM MST
At the Ranch - Glendive, MT
Sale barn address: 42 Road 245 Glendive, MT 59330
Lunch Served 11:30 a.m. MST
Sale Time.....1:00 p.m. MST

SALE DAY PHONE NUMBERS

Clay Lassle, cell406-939-1348
Ryan Thorson, cell406-694-3722
Sarah Thorson, cell406-694-3760
Lassle Sale Barn406-486-5585

SALE REPRESENTATIVES

Jeff Thomas, *The Prairie Star/Farm and Ranch Guide*406-581-8859
Rocky Forseth, *Allied Genetic Resources*406-590-7984
John Goggins, *Western Ag Reporter*406-698-4159
Devin Murnin, *Western Livestock Journal*406-696-1502
Andy Roberts, *ASA SimSpecialist*406-852-4387

AUCTIONEER

Roger Jacobs, Billings, MT406-698-7686

AREA MOTELS

LaQuinta Inn & Suites406-377-7300
Astoria Inn of Glendive406-377-6000
Yellowstone River Inn406-377-4433
Holiday Inn Express406-377-3300

EPD DATA

EPDs are current as of January 7, 2023. View the current EPDs online at herdbook.org

SALE DIRECTIONS

Going west on I-94 out of Glendive – 18 miles

- Take Exit 198 – Crackerbox Exit – Turn left off interstate go 1/4 mile
- Take a right onto CR 261 go 2 1/2 miles there will be 5 mailboxes and a Lassle sign
- Turn left onto Road 245 go 1/4 mile you will see another Lassle sign as you enter the yard.

Going east on I-94 from Miles City

- Take exit 192 – Bad Route Rest Area – turn right off interstate go 1/2 - 3/4 mile
- Turn left onto CR 261
- Go approximately 3 miles to group of mailboxes with Lassle sign
- Turn right onto road 245 go 1/4 mile you will see another Lassle sign as you enter the yard

ABSENTEE BIDDING OPTIONS

SIGHT UNSEEN PURCHASE GUARANTEE!

Be on the Phone

If you would like to be on the phone with one someone during the sale, call one of the sale day phone numbers and we will make arrangements.

Leave us your Order

Call and visit with Ryan, Clay or one of our Sale Representatives ahead of the sale and leave your order with them. Your order will be handled with respect and confidentiality.

ONLINE BIDDING WITH DVAUCTION

Sale Broadcasted Live on DVAuction
www.dvauction.com // 402-316-5460

*Find more details on how to view & bid with DVAuction on page

DVAuction
Broadcasting Real-Time Auctions



To view bull videos scan QR code
or visit dvauction.com

ALLIED
GENETIC RESOURCES

LASSLE RANCH SIMMENTALS

Lots 1-4. Maybe the most intriguing set of full brothers we have sold in years. Their dam, 983G, burst onto the scene last year when her first calf LRS Rarity 983J topped the sale for \$20,000 to Gibbs Farms in Alabama and Baxley Farms in South Carolina, but she has been on our radar since she was a week old and was IVF flushed as a bred heifer - something we had never done until this cow. Sired by ASR American Proud, who topped Willie Altenburg's sale 2 years ago, we chose him to combine with 983G's outcross maternal pedigree and it worked. Whatever cliché you want to use: checks all the boxes, hits all the marks, slam dunk, home run - this group of brothers get the job done. EPDs that lead the industry, phenotype and more phenotype, and from a proven cow family that has the LRS prefix on the maternal side for 25 years, Lots of mating options, with no Sugar C4, Hooks Beacon, or Premium Beef in the pedigree. Check them out - decide what one you like best and breed every cow you own to him they are flat good with cutting edge genetics.

Lot 1

Lot 2

Lot 3

Full Brothers Lots 1-4

1

LRS 123K

BD: 3/14/22 • ASA#: 4046524 • Tattoo: 123K
PB SM • Homo Polled • Homo Black

ASR AMERICAN PATRIOT F843

sire: ASR AMERICAN PROUD H0301

ASR LITTLE DESI D6273

HOOK'S EAGLE 6E

dam: LRS MS EAGLE 983G

LRS MS CLASS ACT 437B



Act. BW	82
BW Ratio	ET
Adj WW	800
WW Ratio	ET
Adj YW	1171
YW Ratio	ET
WDA	3.45
ADG	2.36
Adj SC	38.5

Rank	CE	BW	WW	YW	ADG	MCE	Milk	STAY	DOC	CW	Marb	BF	REA	API	TI
16.4	-0.1	92.9	144.4	0.32	7.8	26.6	19.8	14.0	42.6	0.47	-0.059	1.15	173.2	98.8	
4	25	10	10	10	20	30	15	20	15	10	95	10	3	3	

Heifer bull.

3

LRS 704K

BD: 3/6/22 • ASA#: 4046519 • Tattoo: 704K
PB SM • Homo Polled • Homo Black

ASR AMERICAN PATRIOT F843

sire: ASR AMERICAN PROUD H0301

ASR LITTLE DESI D6273

HOOK'S EAGLE 6E

dam: LRS MS EAGLE 983G

LRS MS CLASS ACT 437B



Act. BW	84
BW Ratio	ET
Adj WW	673
WW Ratio	ET
Adj YW	1203
YW Ratio	ET
WDA	3.30
ADG	3.35
Adj SC	37.6

Rank	CE	BW	WW	YW	ADG	MCE	Milk	STAY	DOC	CW	Marb	BF	REA	API	TI
12.5	-0.1	91.7	140.7	0.31	5.5	26.6	17.6	16.3	45.7	0.44	-0.077	1.28	161.9	97.1	
30	25	15	10	15	55	30	35	10	10	10	70	2	10	4	

2

LRS 611K

BD: 3/11/22 • ASA#: 4046516 • Tattoo: 611K
PB SM • Homo Polled • Homo Black

ASR AMERICAN PATRIOT F843

sire: ASR AMERICAN PROUD H0301

ASR LITTLE DESI D6273

HOOK'S EAGLE 6E

dam: LRS MS EAGLE 983G

LRS MS CLASS ACT 437B



Act. BW	92
BW Ratio	ET
Adj WW	683
WW Ratio	ET
Adj YW	1297
YW Ratio	ET
WDA	3.50
ADG	3.87
Adj SC	36.9

Rank	CE	BW	WW	YW	ADG	MCE	Milk	STAY	DOC	CW	Marb	BF	REA	API	TI
12.3	-0.1	94.0	149.6	0.35	5.4	26.6	19.1	15.4	52.7	0.49	-0.063	1.19	168.7	99.5	
35	25	10	5	4	60	30	20	10	2	10	85	10	4	3	

4

LRS 637K

BD: 3/11/22 • ASA#: 4046518 • Tattoo: 637K
PB SM • Homo Polled • Homo Black

ASR AMERICAN PATRIOT F843

sire: ASR AMERICAN PROUD H0301

ASR LITTLE DESI D6273

HOOK'S EAGLE 6E

dam: LRS MS EAGLE 983G

LRS MS CLASS ACT 437B



Act. BW	90
BW Ratio	ET
Adj WW	723
WW Ratio	ET
Adj YW	1232
YW Ratio	ET
WDA	3.44
ADG	3.22
Adj SC	36.4

Rank	CE	BW	WW	YW	ADG	MCE	Milk	STAY	DOC	CW	Marb	BF	REA	API	TI
13.3	0.7	100.2	148.6	0.30	6.4	26.6	15.6	16.3	44.8	0.36	-0.083	0.91	155.0	98.5	
25	35	3	5	20	40	30	60	10	10	15	50	45	15	3	

Lots 5-8. We flushed the 884F cow after her first son who is a full brother to these flushmates was a top selling bull in our 2021 sale to the Froehlich's in North Dakota. These four full brothers are just like him and the heifer mates to these bulls rise to the top of the replacement pen as well. She is a model cow when it comes to her phenotype. Deep bodied, good footed, nice uddered, and a true performance cow that can transmit growth. One intriguing thing about her is that for a 1/2 blood cow she ranks high for stayability which is not always easy to come by. She is ratioing 112 at weaning and 111 at yearling and both her natural heifer calves have been retained. She will be flushed again this spring as she is a cow that flat gets the job done to raise profitable cattle in this industry.

5

LRS 5002K

BD: 3/3/22 • ASA#: 4046512 • Tattoo: 5002K
5/8 SM 3/8 AN • Homo Polled • Homo Black

HOOK'S BLACK HAWK 50B

sire: HOOK'S EAGLE 6E

HOOK'S CRYSTAL 1C

CONNEALY CAPITALIST 028

dam: LRS MS CAPITALIST 884F

LRS MS TURNINGPOINT 576C



Act. BW	94
BW Ratio	ET
Adj WW	760
WW Ratio	ET
Adj YW	1402
YW Ratio	ET
WDA	3.82
ADG	4.05
Adj SC	37.9

Rank	CE	BW	WW	YW	ADG	MCE	Milk	STAY	DOC	CW	Marb	BF	REA	API	TI
85	9.6	1.5	100.2	158.9	0.37	2.2	20.3	18.8	12.3	55.0	0.33	-0.050	1.23	144.5	91.8
	85	75	2	2	4	99	80	15	50	4	50	50	1	30	10

6

LRS 760K

BD: 3/3/22 • ASA#: 4046510 • Tattoo: 760K
5/8 SM 3/8 AN • Homo Polled • Homo Black

HOOK'S BLACK HAWK 50B

sire: HOOK'S EAGLE 6E

HOOK'S CRYSTAL 1C

CONNEALY CAPITALIST 028

dam: LRS MS CAPITALIST 884F

LRS MS TURNINGPOINT 576C



Act. BW	90
BW Ratio	ET
Adj WW	722
WW Ratio	ET
Adj YW	1175
YW Ratio	ET
WDA	3.35
ADG	2.86
Adj SC	35.9

Rank	CE	BW	WW	YW	ADG	MCE	Milk	STAY	DOC	CW	Marb	BF	REA	API	TI
30	14.2	-0.4	96.7	155.3	0.37	5.4	20.3	17.6	15.7	44.9	0.34	-0.073	0.99	150.7	93.0
	30	40	4	3	4	75	80	25	15	15	50	15	10	20	10

7

LRS 339K

BD: 3/5/22 • ASA#: 4046507 • Tattoo: 339K
5/8 SM 3/8 AN • Homo Polled • Homo Black

HOOK'S BLACK HAWK 50B

sire: HOOK'S EAGLE 6E

HOOK'S CRYSTAL 1C

CONNEALY CAPITALIST 028

dam: LRS MS CAPITALIST 884F

LRS MS TURNINGPOINT 576C



Act. BW	82
BW Ratio	ET
Adj WW	684
WW Ratio	ET
Adj YW	1207
YW Ratio	ET
WDA	3.35
ADG	3.30
Adj SC	34.5

Rank	CE	BW	WW	YW	ADG	MCE	Milk	STAY	DOC	CW	Marb	BF	REA	API	TI
20	15.3	-1.7	85.5	132.9	0.30	5.7	20.3	20.0	14.7	25.1	0.52	-0.034	0.83	163.4	91.8
	20	20	25	25	30	70	80	10	20	75	25	65	25	10	10

Heifer bull.

9

LRS 520K

BD: 3/8/22 • ASA#: 4046219 • Tattoo: 520K
3/4 SM 1/4 AN • Homo Polled • Homo Black

HOOK'S EAGLE 6E

sire: LRS FALCON 442G

LRS MS CLASS ACT 437B

PA FULL POWER 1208

dam: LRS MS FULL POWER 520C

LRS MS TOPGRADE 331A



Act. BW	86
BW Ratio	98
Adj WW	625
WW Ratio	94
Adj YW	1254
YW Ratio	106
WDA	3.40
ADG	3.95
Adj SC	35.7

Rank	CE	BW	WW	YW	ADG	MCE	Milk	STAY	DOC	CW	Marb	BF	REA	API	TI
60	11.7	-1.1	83.9	136.9	0.33	4.4	22.6	23.2	13.7	34.2	0.36	-0.039	1.02	155.9	86.4
	60	30	25	20	15	90	55	1	30	45	45	65	10	15	25

Really balanced 3/4 blood whose dam has maintained a 364 day calving interval on her 6 calves while maintaining a great udder. Check out his top 1% stayability prediction and you can expect his daughters to follow in the footsteps of this bull's dam.



Lot 5



Lot 6

8

LRS 237K

BD: 3/8/22 • ASA#: 4046506 • Tattoo: 237K
5/8 SM 3/8 AN • Homo Polled • Homo Black

HOOK'S BLACK HAWK 50B

sire: HOOK'S EAGLE 6E

HOOK'S CRYSTAL 1C

CONNEALY CAPITALIST 028

dam: LRS MS CAPITALIST 884F

LRS MS TURNINGPOINT 576C



Act. BW	90
BW Ratio	ET
Adj WW	708
WW Ratio	ET
Adj YW	1284
YW Ratio	ET
WDA	3.54
ADG	3.63
Adj SC	38.7

Rank	CE	BW	WW	YW	ADG	MCE	Milk	STAY	DOC	CW	Marb	BF	REA	API	TI
60	11.8	-1.5	98.7	162.7	0.40	3.5	20.3	20.6	15.8	46.2	0.35	-0.039	1.26	158.0	95.7
	60	25	3	2	2	95	80	5	15	15	50	65	1	15	5

10

LRS 085K

BD: 2/18/22 • ASA#: 4046419 • Tattoo: 085K
1/2 SM 1/2 AN • Homo Polled • Homo Black

TEHAMA UPWARD Y238

sire: TEHAMA TAHOE B767

TEHAMA MARY BLACKBIRD Y684

NLC GEN TEN 82E

dam: LRS MS GEN TEN 085H

LRS MS ELEVATE 726E



Act. BW	90
BW Ratio	110
Adj WW	685
WW Ratio	-
Adj YW	1295
YW Ratio	-
WDA	3.27
ADG	3.87
Adj SC	41.2

Rank	CE	BW	WW	YW	ADG	MCE	Milk	STAY	DOC	CW	Marb	BF	REA	API	TI
70	11.1	1.3	92.1	149.8	0.36	4.8	23.9	14.2	14.3	55.4	0.79	0.005	0.48	152.6	95.3
	70	75	10	5	5	85	45	60	25	4	4	99	85	20	5

Heavy muscled Tahoe son who you will really appreciate when you get in the pens. He is a little short on one ear, but that can just be a friendly reminder of the 2022 calving season.

LASSLE RANCH SIMMENTALS

LRS 661K

11

BD: 4/14/22 • ASA#: 4046238 • Tattoo: 661K
3/4 SM 1/4 AN • Homo Polled • Hetero Black

LRS ADJUSTER 793Y

sire: ELLIOTT F524

LRS MS FULL POWER 5129C

CCR GRAVITY 9064A

dam: LRS MS JOY 661D

LRS MS PLATINUM 415B



Act. BW	98
BW Ratio	112
Adj WW	719
WW Ratio	107
Adj YW	-
YW Ratio	-
WDA	3.56
ADG	3.25
Adj SC	35.7

Rank	CE	BW	WW	YW	ADG	MCE	Milk	STAY	DOC	CW	Marb	BF	REA	API	TI
95	8.0	4.5	96.4	150.8	0.34	4.4	25.2	12.9	13.2	30.2	0.09	-0.095	0.78	110.5	80.3

Harper's bull who she named "Snowball." One thing about Harper, she can come up with some fun names. He might be Heterozygous Black, but you will certainly like him for his excellent phenotype, and 107 WW Ratio with great growth. Look at his age - the youngest bull in the sale. Too young to get a YW ratio.

LRS 9160K

12

BD: 3/15/22 • ASA#: 4046371 • Tattoo: 9160K
1/2 SM 1/2 AN • Homo Polled • Homo Black

BASIN RAINMAKER 2704

sire: BASIN RAINMAKER 4404

BASIN JOY 1036

LRS ELEVATE 213B

dam: LRS MS ELEVATE 9160G

LRS MS OLIE 078X



Act. BW	96
BW Ratio	113
Adj WW	764
WW Ratio	115
Adj YW	1303
YW Ratio	110
WDA	3.59
ADG	3.43
Adj SC	37.6

Rank	CE	BW	WW	YW	ADG	MCE	Milk	STAY	DOC	CW	Marb	BF	REA	API	TI
65	11.6	-0.1	76.4	121.6	0.28	7.1	28.6	15.4	9.9	34.1	0.50	-0.026	0.57	136.0	81.3

Rainmaker son who traces back to one of the most influential cows ever bred here, the 078X cow, who is the grandam of this bull, but also the same cow family as the 983G cow. Maternal Genetics on both the top and the bottom here and we sure like our Rainmaker females in the herd.

LRS 585K

13

BD: 3/12/22 • ASA#: 4046492 • Tattoo: 585K
PB SM • Homo Polled • Homo Black

CCR WIDE RANGE 9005A

sire: GIBBS 7382E BROAD RANGE

SSF BLK LOUISE Y534

HOOK'S EAGLE 6E

dam: LRS MS EAGLE 983G

LRS MS CLASS ACT 437B



Act. BW	86
BW Ratio	ET
Adj WW	717
WW Ratio	ET
Adj YW	1299
YW Ratio	ET
WDA	3.56
ADG	3.67
Adj SC	36.9

Rank	CE	BW	WW	YW	ADG	MCE	Milk	STAY	DOC	CW	Marb	BF	REA	API	TI
15	14.5	-1.1	92.3	146.0	0.34	8.1	23.4	14.5	15.7	46.4	0.20	-0.020	1.33	147.1	92.2

Gibbs Broad Range x 983G cow. This is the first of the two full brothers to sell. Great phenotype, Great genetics from a time tested cow family in our operation and the dam of Gibbs Broad Range has had a large influence in the Gibbs program as well. 983G is young, but the predictability she is putting into her calves over multiple sire groups is crazy good. 2 different purebred mating options from the 983G cow, find the ones you like and let them work for you. Full brother sells as lot 47. Maternal brothers sell as lots 1-4

LRS 034K

14

BD: 1/28/22 • ASA#: 4046457 • Tattoo: 034K
PB SM • Homo Polled • Homo Black

CCR WIDE RANGE 9005A

sire: GIBBS 7382E BROAD RANGE

SSF BLK LOUISE Y534

LRS BADLANDS 401F

dam: LRS MS BLEU 034H

LRS MS MIDNIGHT 659D



Act. BW	80
BW Ratio	99
Adj WW	739
WW Ratio	100
Adj YW	1210
YW Ratio	100
WDA	3.19
ADG	3.01
Adj SC	37.6

Rank	CE	BW	WW	YW	ADG	MCE	Milk	STAY	DOC	CW	Marb	BF	REA	API	TI
10	15.3	-1.0	91.7	145.1	0.33	10.8	24.9	14.0	15.5	60.5	0.38	-0.024	1.46	145.6	91.9

Grace's bull out of her 1st calf heifer who did a nice job her first year out the gate. His Badlands sired momma is fun to look at with her great udder, big foot, and lots of capacity in a really good frame size. 739 lb adjusted WW out of a first calf heifer with added carcass value.



Lot 11

\$250 SALE CREDIT

STOP BY THE RANCH AND VIEW THE BULLS
BEFORE SALE DAY TO RECEIVE A \$250
SALE CREDIT AT OUR 2023 BULL SALE.



Lot 13



LOT 14 WITH HIS DAM, LATE FALL

15

LRS 507K

BD: 3/10/22 • ASA#: 4046213 • Tattoo: 507K
1/2 SM 1/2 AN • Hetero Polled • Homo Black

MAR INNOVATION 251

sire: LRS TOPSHELF 902F

LRS MS TOPGRADE 303A

LRS RANGE BOSS 901Z

dam: LRS MS RANGE BOSS 507C

LRS MS SHRPR IMAGE 222Z



Act. BW	88
BW Ratio	100
Adj WW	725
WW Ratio	108
Adj YW	1271
YW Ratio	107
WDA	3.58
ADG	3.45
Adj SC	38.3

Rank	CE	BW	WW	YW	ADG	MCE	Milk	STAY	DOC	CW	Marb	BF	REA	API	TI
EPDs	12.0	0.1	91.5	138.5	0.29	7.3	17.1	10.5	12.8	52.1	0.46	-0.033	0.79	134.6	90.2
60	50	10	15	35	40	95	90	45	10	30	65	30	45	15	

High octave son of Top Shelf who ratioed 108 for WW and 107 for YW. Easy to spot as you walk around the pens.

16

LRS 9161K

BD: 3/12/22 • ASA#: 4046372 • Tattoo: 9161K
1/2 SM 1/2 AN • Homo Polled • Homo Black

MAR INNOVATION 251

sire: LRS TOPSHELF 902F

LRS MS TOPGRADE 303A

S A V RAINDANCE 6848

dam: LRS MS RAINDANCE 9161G

LRS MS OLIE 078X



Act. BW	84
BW Ratio	99
Adj WW	685
WW Ratio	103
Adj YW	1325
YW Ratio	112
WDA	3.51
ADG	4.02
Adj SC	36.4

Rank	CE	BW	WW	YW	ADG	MCE	Milk	STAY	DOC	CW	Marb	BF	REA	API	TI
EPDs	11.6	0.8	91.9	148.7	0.35	5.6	19.5	17.3	7.7	45.8	0.26	-0.052	0.79	138.0	85.8
65	65	10	10	10	75	85	30	95	15	65	35	30	40	25	

Sired by LRS Top Shelf who was purchased by Beggers Diamond V Ranch a few years back. With over 300 progeny recorded in the ASA database he has proven himself to be a breed leader for growth ranking in the top 2% of the population for the breed. You can see it in sons like this who came in off the cow ratioing 103 and a whopping 112 at a year.

18

LRS 621K

BD: 3/6/22 • ASA#: 4046233 • Tattoo: 621K
1/2 SM 1/2 AN • Homo Polled • Homo Black

MAR INNOVATION 251

sire: LRS TOPSHELF 902F

LRS MS TOPGRADE 303A

LRS RANGE BOSS 901Z

dam: LRS MS RANGE BOSS 621D

LRS MS PIONEER 127Y



Act. BW	92
BW Ratio	105
Adj WW	624
WW Ratio	94
Adj YW	1186
YW Ratio	101
WDA	3.24
ADG	3.53
Adj SC	36.1

Rank	CE	BW	WW	YW	ADG	MCE	Milk	STAY	DOC	CW	Marb	BF	REA	API	TI
EPDs	12.8	1.8	86.4	129.9	0.27	5.0	12.5	17.5	11.2	36.6	0.17	-0.015	0.67	128.5	77.3
45	80	20	30	50	80	99	25	70	35	80	85	55	55	60	

Might have only weaned off at 624 lbs but has been gaining good on test to ratio 101 at a year. If you were to study back 3 generations on his pedigree, there are some maternal greats in his pedigree like 303A, 901W, and 5517R. Great option if you are keeping replacement heifers.

19

LRS 815K

BD: 3/7/22 • ASA#: 4046323 • Tattoo: 815K
3/4 SM 1/4 AN • Homo Polled • Homo Black

HOOK'S EAGLE 6E

sire: LRS FALCON 442G

LRS MS CLASS ACT 437B

LRS TOP TEN 104A

dam: LRS MS TOP TEN 815F

LRS MS ELEVATE 634D



Act. BW	90
BW Ratio	104
Adj WW	725
WW Ratio	108
Adj YW	1219
YW Ratio	101
WDA	3.41
ADG	3.13
Adj SC	38.1

Rank	CE	BW	WW	YW	ADG	MCE	Milk	STAY	DOC	CW	Marb	BF	REA	API	TI
EPDs	10.3	0.3	92.4	146.4	0.34	3.6	23.0	13.2	8.7	58.5	0.07	-0.071	1.29	119.1	82.6
80	55	10	10	10	95	55	70	90	3	95	15	1	75	40	

Sired by LRS falcon who was our top selling bull just 3 years ago to the Hansen's in North Dakota. This is her 3rd bull calf and all have made the sale. Model type cow who is just 5 years old and does her job every year.



Lot 15

17

LRS 730K

BD: 3/31/22 • ASA#: 4046262 • Tattoo: 730K
5/8 SM 3/8 AN • Homo Polled • Homo Black

LRS ADJUSTER 793Y

sire: ELLIOTT F524

LRS MS FULL POWER 5129C

LRS TOP TEN 104A

dam: LRS MS TOP TEN 730E

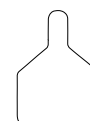
LRS MS ROBUST 498B

Act. BW	90
BW Ratio	104
Adj WW	759
WW Ratio	113
Adj YW	1280
YW Ratio	106
WDA	3.66
ADG	3.30
Adj SC	38.4

Rank	CE	BW	WW	YW	ADG	MCE	Milk	STAY	DOC	CW	Marb	BF	REA	API	TI
EPDs	11.4	-0.3	80.0	130.0	0.31	4.8	21.7	11.1	12.7	31.8	0.29	-0.096	0.75	125.1	81.6
65	40	40	30	25	85	65	85	45	55	60	4	40	60	40	

759 lbs off the cow to ratio 113. We have a small group of bulls sire by the Elliot F524 bull we call "Midtown" and most are younger calves like this dude who is only a March 31st baby.

LOT COLOR CODES



UNDERSTANDING LOT NUMBER COLOR CODES

Green Ear Tags

Purebred Simmental Bulls

Blue Ear Tags

3/4 Simmental

Yellow Ear Tags

5/8 or 1/2 Simmentals

White Ear Tags

1/4 to 3/8 Simmentals



Lot 19

LASSLE RANCH SIMMENTALS

20

LRS 720K

BD: 3/2/22 • ASA#: 4046257 • Tattoo: 720K
1/2 SM 1/2 AN • Homo Polled • Homo Black

TEHAMA UPWARD Y238

sire: **TEHAMA TAHOE B767**

TEHAMA MARY BLACKBIRD Y684

LRS ELEVATE 213B

dam: **LRS MS ELEVATE 720E**

LRS MS CLASS ACT 5118C



Act. BW	86
BW Ratio	98
Adj WW	644
WW Ratio	96
Adj YW	1239
YW Ratio	102
WDA	3.35
ADG	3.78
Adj SC	39.4

Rank	CE	BW	WW	YW	ADG	MCE	Milk	STAY	DOC	CW	Marb	BF	REA	API	TI
EPDs	14.0	-0.6	87.0	138.8	0.32	6.0	20.3	19.8	10.3	45.4	0.63	-0.050	0.85	160.8	91.6
	30	35	20	15	20	65	80	10	80	15	15	50	25	10	15

Tehama Tahoe sons were very well received last year and you will like them again with their curvebender genetic predictions of good calving ease and added growth. His dam traces back to a full sister the 437B cow



HARPER AND "JOEY" • RESERVE CHAMPION STEER DAWSON COUNTY FAIR
AND CHAMPION CARCASS STEER CHAMPIONS OF CHAMPIONS



Lot 23



Lot 24

21

LRS 725K

BD: 3/14/22 • ASA#: 4046258 • Tattoo: 725K
5/8 SM 3/8 AN • Homo Polled • Homo Black

MAR INNOVATION 251

sire: **LRS TOPSHELF 902F**

LRS MS TOPGRADE 303A

LRS ELEVATE 213B

dam: **LRS MS ELEVATE 725E**

LRS MS TURNINGPOINT 544C



Act. BW	94
BW Ratio	107
Adj WW	657
WW Ratio	98
Adj YW	1250
YW Ratio	103
WDA	3.42
ADG	3.74
Adj SC	35.0

Rank	CE	BW	WW	YW	ADG	MCE	Milk	STAY	DOC	CW	Marb	BF	REA	API	TI
EPDs	9.6	3.4	93.5	142.1	0.30	6.4	18.7	12.2	8.9	60.2	0.00	-0.079	1.20	105.8	76.7
	85	99	10	15	30	60	90	80	90	2	99	15	2	90	60

This high ribeye bull is gaining over 4 lbs a day.

22

LRS 6026K

BD: 3/6/22 • ASA#: 4046246 • Tattoo: 6026K
PB SM • Homo Polled • Homo Black

CCR WIDE RANGE 9005A

sire: **GIBBS 7382E BROAD RANGE**

SSF BLK LOUISE Y534

LRS ELEVATE 213B

dam: **LRS MS ELEVATE 6026D**

LRS MS SHRPR IMAGE 3012A



Act. BW	88
BW Ratio	100
Adj WW	691
WW Ratio	103
Adj YW	1277
YW Ratio	106
WDA	3.49
ADG	3.71
Adj SC	33.6

Rank	CE	BW	WW	YW	ADG	MCE	Milk	STAY	DOC	CW	Marb	BF	REA	API	TI
EPDs	12.2	0.8	91.1	140.5	0.31	8.0	22.5	15.9	14.3	49.4	0.07	-0.048	1.19	124.1	80.7
	35	40	15	15	15	15	60	55	20	4	70	99	10	65	45

Ratioed 103 at weaning time and has kept it going to ratio 106 at a year. Dam is a member of the great flush of elevate daughters out of the 3012A cow which also includes the 6025D cow who is the dam of lot 28.

23

LRS 066K

BD: 1/16/22 • ASA#: 4046456 • Tattoo: 066K
3/4 SM 1/4 AN • Homo Polled • Homo Black

CCR WIDE RANGE 9005A

sire: **GIBBS 7382E BROAD RANGE**

SSF BLK LOUISE Y534

MCCONNELL ALTITUDE 3114

dam: **LRS MS ALTITUDE 066H**

LRS MS TOPGRADE 303A



Act. BW	86
BW Ratio	105
Adj WW	749
WW Ratio	102
Adj YW	1241
YW Ratio	103
WDA	3.30
ADG	3.13
Adj SC	34.9

Rank	CE	BW	WW	YW	ADG	MCE	Milk	STAY	DOC	CW	Marb	BF	REA	API	TI
EPDs	15.9	-0.7	94.2	156.4	0.39	10.0	20.8	17.7	12.1	34.1	0.39	0.017	0.66	155.1	92.4
	15	35	10	3	2	10	75	25	55	45	40	99	55	15	10

749 lbs WW on this great growth bull out of just a first calf heifer from the 303A cow who is also the dam of LRS Top Shelf. He is an early born calf, so he had a small contemporary group, but one of the top WW weights in the whole sale. These Gibbs broad range calves really have curve bending EPDs

24

LRS 0142K

BD: 1/22/22 • ASA#: 4046460 • Tattoo: 0142K
PB SM • Homo Polled • Homo Black

CCR WIDE RANGE 9005A

sire: **GIBBS 7382E BROAD RANGE**

SSF BLK LOUISE Y534

NLC GEN TEN 82E

dam: **LRS MS CLEO 0142H**

LRS MS TOPGRADE 303A



Act. BW	86
BW Ratio	106
Adj WW	722
WW Ratio	98
Adj YW	1218
YW Ratio	101
WDA	3.20
ADG	3.16
Adj SC	33.2

Rank	CE	BW	WW	YW	ADG	MCE	Milk	STAY	DOC	CW	Marb	BF	REA	API	TI
EPDs	11.4	2.3	90.6	149.5	0.37	6.5	22.8	15.3	14.1	50.3	0.23	-0.053	1.12	140.8	87.8
	45	70	15	5	2	40	60	60	20	4	35	95	10	35	20

Grace's other bull in the sale she calls Zeus. Would be a 3/4 brother to the lot 23 bull just above as his sire is also a Broad Range out of a different daughter of the 303A cow. We flushed this bull's dam this last spring as a 2 year old. Power cow with great phenotype and a great udder.

25

LRS 989K

BD: 3/13/22 • ASA#: 4046365 • Tattoo: 989K
1/2 SM 1/2 AN • Homo Polled • Homo Black

MAR INNOVATION 251

sire: LRS TOPSHELF 902F

LRS MS TOPGRADE 303A

BASIN RAINMAKER 4404

dam: LRS MS RAINMAKER 989G

LRS MS ELEVATE 6024D



Act. BW	82
BW Ratio	97
Adj WW	768
WW Ratio	115
Adj YW	1352
YW Ratio	115
WDA	3.68
ADG	3.67
Adj SC	35.5

Rank	CE	BW	WW	YW	ADG	MCE	Milk	STAY	DOC	CW	Marb	BF	REA	API	TI
EPDs	10.8	2.0	99.8	155.8	0.35	8.4	23.6	12.2	10.7	55.2	0.26	-0.051	0.81	121.1	86.5
	75	85	2	3	10	25	45	80	75	4	65	35	30	70	25

His Dam is our oldest Rainmaker daughter, and her 2nd calf is another zinger. This is why we are excited to get more of these Rainmakers in production. Check out his WW and YW ratios and excellent phenotypy.

GRACE AND "STORM" • CHAMPION STEER DAWSON COUNTY FAIR
AND 3RD OVERALL CHAMPION OF CHAMPIONS

26

LRS 6025K

BD: 3/9/22 • ASA#: 4046245 • Tattoo: 6025K
1/2 SM 1/2 AN • Homo Polled • Homo Black

BASIN RAINMAKER 2704

sire: BASIN RAINMAKER 4404

BASIN JOY 1036

LRS ELEVATE 213B

dam: LRS MS ELEVATE 6025D

LRS MS SHRRP IMAGE 3012A



Act. BW	90
BW Ratio	101
Adj WW	760
WW Ratio	113
Adj YW	1395
YW Ratio	115
WDA	3.87
ADG	4.01
Adj SC	41.7

Rank	CE	BW	WW	YW	ADG	MCE	Milk	STAY	DOC	CW	Marb	BF	REA	API	TI
EPDs	12.1	1.4	95.3	152.9	0.36	9.0	29.0	9.7	15.7	61.3	0.44	-0.004	0.63	126.7	89.2
	55	75	5	4	5	20	10	95	15	2	35	95	60	60	20

A full brother to one of our top selling bulls 2 years ago. A full sister is in the bred heifer pen as well. Big testicles on this larger framed powerhouse who has flat pushed the scales down.



Lot 26

27

LRS CBL 27K

BD: 3/15/22 • ASA#: 4106681 • Tattoo: 27K
1/2 SM 1/2 AN • Homo Polled • Homo Black

HOOK'S EAGLE 6E

sire: LRS FALCON 442G

LRS MS CLASS ACT 437B

OPP ARSENAL 550

dam: CBA MS ARSENAL E577

CBA LADY M 158

Act. BW	84
BW Ratio	101
Adj WW	766
WW Ratio	113
Adj YW	1374
YW Ratio	121
WDA	3.81
ADG	3.82
Adj SC	40.1

Rank	CE	BW	WW	YW	ADG	MCE	Milk	STAY	DOC	CW	Marb	BF	REA	API	TI
EPDs	13.6	-0.3	94.4	154.5	0.38	6.1	28.6	16.2	15.0	52.0	0.45	-0.025	0.87	146.4	92.0
	35	40	10	3	3	65	10	40	20	10	30	75	20	25	10

True F1 1/2 blood sired by LRS Falcon out of a purebred Angus cow. Great indexes as he combined moderate birth and great growth with a 113 WW ratio and a 121 YW ratio! RightChoice Score pending.

28

LRS 754K

BD: 3/17/22 • ASA#: 4046271 • Tattoo: 754K
PB SM • Homo Polled • Homo Black

HOOK'S EAGLE 6E

sire: LRS FALCON 442G

LRS MS CLASS ACT 437B

3C PASQUE 4331B B

dam: LRS MS PASQUE 754E

LRS MS TRAVELER21 449B



Act. BW	92
BW Ratio	106
Adj WW	736
WW Ratio	110
Adj YW	1312
YW Ratio	108
WDA	3.65
ADG	3.63
Adj SC	43.7

Rank	CE	BW	WW	YW	ADG	MCE	Milk	STAY	DOC	CW	Marb	BF	REA	API	TI
EPDs	7.8	0.3	89.9	151.0	0.38	3.5	22.8	17.3	16.2	48.6	0.26	-0.061	0.95	134.7	85.5
	90	30	15	4	1	90	60	40	10	5	30	85	35	45	25

Big Testicles on this stout rascal with a outcross pedigree on the bottom side of his pedigree who ratioed 113 for yearling weight

29

LRS 7107K

BD: 3/9/22 • ASA#: 4046250 • Tattoo: 7107K
3/4 SM 1/4 AN • Homo Polled • Homo Black

HOOK'S EAGLE 6E

sire: LRS FALCON 442G

LRS MS CLASS ACT 437B

MAR INNOVATION 251

dam: LRS MS INNOVATION 7107E

LRS MS OLIE 078X



Act. BW	92
BW Ratio	105
Adj WW	667
WW Ratio	99
Adj YW	1235
YW Ratio	102
WDA	3.42
ADG	3.56
Adj SC	36.7

Rank	CE	BW	WW	YW	ADG	MCE	Milk	STAY	DOC	CW	Marb	BF	REA	API	TI
EPDs	9.3	-2.2	86.8	141.2	0.34	2.9	22.6	16.5	14.0	48.9	0.39	-0.056	1.07	144.4	89.9
	90	15	20	15	10	99	55	35	30	10	40	35	4	30	15

Great pedigree behind this bull and we have flushed his dam a couple years ago. Been gaining well on test.

30

LRS CBL 44K

BD: 3/18/22 • ASA#: 4106691 • Tattoo: 44K
3/4 SM 1/4 AN • Homo Polled • Homo Black

CCR WIDE RANGE 9005A

sire: GIBBS 7382E BROAD RANGE

SSF BLK LOUISE Y534

HOOK'S BALTIC 17B

dam: CBL MS BALTIC G369

CBA MS IN SURE B24

Act. BW	82
BW Ratio	104
Adj WW	733
WW Ratio	108
Adj YW	1306
YW Ratio	115
WDA	3.56
ADG	3.61
Adj SC	37.2

Rank	CE	BW	WW	YW	ADG	MCE	Milk	STAY	DOC	CW	Marb	BF	REA	API	TI
EPDs	13.2	0.5	93.4	153.7	0.38	8.2	19.4	13.5	13.2	51.9	0.26	-0.004	0.95	133.4	86.9
	40	55	10	4	3	30	85	70	40	10	65	95	15	50	25

Over a 1300 lb yearling weight out of a good young Hooks Baltic daughter. RightChoice Score pending.

LASSLE RANCH SIMMENTALS

LRs 8010K

31

BD: 3/6/22 • ASA#: 4046301 • Tattoo: 8010K
5/8 SM 3/8 AN • Homo Polled • Homo Black

MAR INNOVATION 251

sire: **LRs TOPSHELF 902F**

LRs MS TOPGRADE 303A

TRAXS PREMIUM D01

dam: **LRs MS PREMIUM 8010F**

LRs MS INDEWTIME 414B



Act. BW	94
BW Ratio	110
Adj WW	709
WW Ratio	106
Adj YW	1278
YW Ratio	106
WDA	3.49
ADG	3.60
Adj SC	34.6

Rank	CE	BW	WW	YW	ADG	MCE	Milk	STAY	DOC	CW	Marb	BF	REA	API	TI
65	11.6	0.6	91.2	144.9	0.34	8.6	19.7	17.9	13.1	51.4	0.32	-0.035	0.77	141.8	86.6

Another Top Shelf son with great growth who sports a 106 ratio off the cow and has kept it up in the pens.



Lot 33



Lot 34



Lot 35

LRs 0129K

32

BD: 3/1/22 • ASA#: 4046415 • Tattoo: 0129K
3/4 SM 1/4 AN • Homo Polled • Homo Black

CCR WIDE RANGE 9005A

sire: **GIBBS 7382E BROAD RANGE**

SSF BLK LOUISE Y534

THR HIGH POINT 8533F

dam: **LRs MS HIGH POINT 0129H**

LRs MS FULL POWER 655D



Act. BW	90
BW Ratio	110
Adj WW	759
WW Ratio	113
Adj YW	1377
YW Ratio	116
WDA	3.56
ADG	3.92
Adj SC	33.3

Rank	CE	BW	WW	YW	ADG	MCE	Milk	STAY	DOC	CW	Marb	BF	REA	API	TI
95	7.6	3.4	106.8	168.6	0.39	-0.1	21.7	14.6	14.1	45.2	0.16	-0.045	0.75	122.7	88.4

There is some bw in this guy, but lots of growth. Put him on a set of mature cows and reap the rewards every fall at the scale.

LRs 634K

33

BD: 3/14/22 • ASA#: 4046234 • Tattoo: 634K
1/2 SM 1/2 AN • Homo Polled • Homo Black

MAR INNOVATION 251

sire: **LRs TOPSHELF 902F**

LRs MS TOPGRADE 303A

LRs ELEVATE 213B

dam: **LRs MS ELEVATE 634D**

LRs MS BISMARCK 106Y



Act. BW	86
BW Ratio	98
Adj WW	744
WW Ratio	111
Adj YW	1143
YW Ratio	94
WDA	3.38
ADG	2.51
Adj SC	35.5

Rank	CE	BW	WW	YW	ADG	MCE	Milk	STAY	DOC	CW	Marb	BF	REA	API	TI
60	12.0	1.0	92.6	152.0	0.37	7.6	20.7	16.7	12.6	53.9	0.13	-0.038	0.93	130.3	82.9

This bull had a full brother last year who was just as good but got hurt and never made it to the sale. This mating has clicked two years in a row. Almost 750lbs off the cow.

LRs 620K

34

BD: 3/17/22 • ASA#: 4046232 • Tattoo: 620K
1/2 SM 1/2 AN • Homo Polled • Homo Black

MAR INNOVATION 251

sire: **LRs TOPSHELF 902F**

LRs MS TOPGRADE 303A

S A V RESOURCE 1441

dam: **LRs MS RESOURCE 620D**

LRs MS SUREBET 104Y



Act. BW	94
BW Ratio	107
Adj WW	667
WW Ratio	99
Adj YW	1304
YW Ratio	108
WDA	3.58
ADG	3.98
Adj SC	38.7

Rank	CE	BW	WW	YW	ADG	MCE	Milk	STAY	DOC	CW	Marb	BF	REA	API	TI
70	11.2	0.7	90.1	139.7	0.31	4.2	17.0	15.5	10.8	43.9	0.22	-0.046	0.59	124.0	80.4

His SAV Resource sired momma is a direct daughter of the 104Y cow, best known as the dam of LRs Top Ten. Ratioed 108 at a year and gaining like crazy.

LRs 848K

35

BD: 3/11/22 • ASA#: 4046300 • Tattoo: 848K
PB SM • Homo Polled • Homo Black

HOOK'S EAGLE 6E

sire: **LRs FALCON 442G**

LRs MS CLASS ACT 437B

RBS BOISE B63

dam: **LRs MS BOISE 848F**

LRs MS BANKSHOT 440B



Act. BW	90
BW Ratio	105
Adj WW	683
WW Ratio	102
Adj YW	1266
YW Ratio	105
WDA	3.40
ADG	3.70
Adj SC	36.9

Rank	CE	BW	WW	YW	ADG	MCE	Milk	STAY	DOC	CW	Marb	BF	REA	API	TI
65	10.1	1.8	90.4	136.8	0.29	6.4	20.6	17.1	12.5	44.5	0.15	-0.079	1.47	137.5	85.8

Soggy made PB bull with some added performance.

36

LRS 732K

BD: 3/3/22 • ASA#: 4046263 • Tattoo: 732K
1/2 SM 1/2 AN • Homo Polled • Homo Black

TEHAMA UPWARD Y238

sire: TEHAMA TAHOE B767

TEHAMA MARY BLACKBIRD Y684

3C PASQUE 4331B B

dam: LRS MS PASQUE 732E

LRS MS 8002Z 439B



Act. BW	86
BW Ratio	98
Adj WW	607
WW Ratio	90
Adj YW	1228
YW Ratio	101
WDA	3.27
ADG	3.94
Adj SC	40.9

Rank	CE	BW	WW	YW	ADG	MCE	Milk	STAY	DOC	CW	Marb	BF	REA	API	TI
EPDs	13.3	-1.1	81.6	125.8	0.28	7.1	20.4	22.9	14.9	38.5	0.36	-0.014	0.56	153.9	83.5
	40	30	35	35	40	45	75	1	20	30	45	85	75	20	35

Tahoe son with a top ranking stayability epd and a big set of testicles underneath him. Full sister is in the bred heifer pen. Keep every daughter!

38

LRS CBL 43K

BD: 3/19/22 • ASA#: 4106690 • Tattoo: 43K
PB SM • Polled • Black

CLRS FINANCIAL 619F

sire: LRS BITCOIN 437H

LRS MS CLASS ACT 437B

KS FARVE D73

dam: CBL MS FARVE F728

CBL MS FULL POWER C105

Act. BW	89
BW Ratio	111
Adj WW	665
WW Ratio	98
Adj YW	1289
YW Ratio	113
WDA	3.46
ADG	3.94
Adj SC	37.3

Rank	CE	BW	WW	YW	ADG	MCE	Milk	STAY	DOC	CW	Marb	BF	REA	API	TI
EPDs	9.3	2.3	81.9	131.6	0.31	3.3	22.0	16.8	13.1	39.7	0.34	-0.073	0.98	132.1	80.3
	75	70	40	25	15	90	65	45	30	20	20	70	30	50	45

Outstanding calf out of Bitcoin who is a son of the famed 437B cow known for transmitting growth and power and that can be seen in this guy with his YW ratio and ADG. Homo black test pending. RightChoice Score pending.

39

LRS CBL 30K

BD: 3/16/22 • ASA#: 4106683 • Tattoo: 30K
3/4 SM 1/4 AN • Homo Polled • Homo Black

ASR AMERICAN PATRIOT F843

sire: ASR AMERICAN PROUD H0301

ASR LITTLE DESI D6273

CCR PAYDAY 0320C

dam: CBL MS PAYDAY F358

CBL MISS BCT Y101

Act. BW	81
BW Ratio	100
Adj WW	665
WW Ratio	98
Adj YW	1141
YW Ratio	100
WDA	3.19
ADG	3.01
Adj SC	36.1

Rank	CE	BW	WW	YW	ADG	MCE	Milk	STAY	DOC	CW	Marb	BF	REA	API	TI
EPDs	11.7	1.3	85.2	129.0	0.27	5.9	25.6	19.1	13.0	36.3	0.37	-0.036	0.69	141.9	83.6
	60	75	25	30	50	70	30	15	40	40	45	65	50	35	35

Really balanced set of EPDs across the board. This is our first calf crop from American Proud and we sure are excited to get some more calves this spring. The heifers in the replacement pen look great. RightChoice Score pending.

41

LRS 9154K

BD: 3/14/22 • ASA#: 4046377 • Tattoo: 9154K
3/4 SM 1/4 AN • Homo Polled • Homo Black

RBS BOISE B63

sire: LRS BADLANDS 401F

LRS MS TEN X 401B

HOOK'S EAGLE 6E

dam: LRS MS EAGLE 9154G

LRS MS DUAL FOCUS 213Z



Act. BW	88
BW Ratio	105
Adj WW	691
WW Ratio	104
Adj YW	1235
YW Ratio	105
WDA	3.32
ADG	3.45
Adj SC	36.0

Rank	CE	BW	WW	YW	ADG	MCE	Milk	STAY	DOC	CW	Marb	BF	REA	API	TI
EPDs	8.9	2.7	96.4	135.6	0.25	5.6	25.4	12.1	18.5	54.0	0.72	-0.096	1.20	144.6	97.3
	90	95	4	20	65	75	30	80	3	5	10	4	2	30	4

His young Eagle sired dam is off to a rockin start. 112 nursing ratio on her first two calves. Her bull last year sold in the sale as well.

37

LRS 810K

BD: 3/4/22 • ASA#: 4046454 • Tattoo: 810K
5/8 SM 3/8 AN • Homo Polled • Homo Black

RBS BOISE B63

sire: LRS BADLANDS 401F

LRS MS TEN X 401B

LRS TOP TEN 104A

dam: LRS MS TOP TEN 810F

LRS MS INNOVATION 658D



Act. BW	90
BW Ratio	104
Adj WW	639
WW Ratio	95
Adj YW	1265
YW Ratio	105
WDA	3.35
ADG	3.94
Adj SC	34.0

Rank	CE	BW	WW	YW	ADG	MCE	Milk	STAY	DOC	CW	Marb	BF	REA	API	TI
EPDs	12.2	1.5	92.7	141.7	0.31	8.0	23.5	10.2	14.5	55.9	0.53	-0.044	0.81	136.3	91.7
	55	75	10	15	25	30	50	90	25	4	20	50	30	45	10

Probably our last group of Badlands progeny to sell as we are out of semen. Since using this bull back in our program, he has exceeded all the expectations we had for him. This rascal is really gaining.



40

LRS 010K

BD: 2/20/22 • ASA#: 4046432 • Tattoo: 010K
3/4 sm 3/16 an 1/16 mx • Homo Polled • Homo Black

CCR WIDE RANGE 9005A

sire: GIBBS 7382E BROAD RANGE

SSF BLK LOUISE Y534

HOOK'S EAGLE 6E

dam: LRS MS EAGLE 010H

LRS MS ALTITUDE 827F



Act. BW	80
BW Ratio	98
Adj WW	711
WW Ratio	107
Adj YW	1216
YW Ratio	103
WDA	3.19
ADG	3.21
Adj SC	33.8

Rank	CE	BW	WW	YW	ADG	MCE	Milk	STAY	DOC	CW	Marb	BF	REA	API	TI
EPDs	13.5	-2.8	79.0	124.5	0.28	6.9	22.2	19.3	16.8	38.6	0.28	-0.029	0.95	146.1	83.1
	40	10	45	40	40	50	60	15	10	30	60	75	15	30	35

This first calf heifer did a great job bringing this one home with an actual 721 lb weaning weight.

42

LRS CBL 22K

BD: 3/13/22 • ASA#: 4106678 • Tattoo: 22K
1/2 SM 1/2 AN • Homo Polled • Homo Black

MAR INNOVATION 251

sire: LRS TOPSHELF 902F

LRS MS TOPGRADE 303A

LRS TOP TEN 104A

dam: CBL MS TOP TEN D266

CBL MS AXIS Z242

Act. BW	78
BW Ratio	95
Adj WW	710
WW Ratio	105
Adj YW	1269
YW Ratio	111
WDA	3.54
ADG	3.52
Adj SC	36.5

Rank	CE	BW	WW	YW	ADG	MCE	Milk	STAY	DOC	CW	Marb	BF	REA	API	TI
EPDs	12.4	0.5	93.5	144.8	0.32	7.8	18.5	13.5	12.4	44.8	0.30	-0.034	0.64	132.9	87.2
	55	55	10	10	20	35	90	70	50	15	55	65	60	50	25

Another growthy Top Shelf bull whose 7 year old dam gets the job done with her 105 nursing ratio on 5 calves. RightChoice Score pending.

LASSLE RANCH SIMMENTALS

VOLUME DISCOUNTS

BUYER VOLUME DISCOUNTS

We will be offering discounts for volume bull buyers:
3 head - 3% | 4 head - 4% | 5 or more head 5%



LRS 0140K

45

BD: 3/26/22 • ASA#: 4046439 • Tattoo: 0140K
5/8 SM 3/8 AN • Homo Polled • Homo Black

NLC COW BOSS 160C

sire: **BSUM EINSTEIN 929G**

TUEL MS EFFECTIVE 369A

LD CAPITALIST 316

dam: **LRS MS CAPITALIST 0140H**

LRS MS CLASS ACT 437B



Act. BW	82
BW Ratio	99
Adj WW	763
WW Ratio	119
Adj YW	1268
YW Ratio	110
WDA	3.46
ADG	3.18
Adj SC	36.7

Rank	CE	BW	WW	YW	ADG	MCE	Milk	STAY	DOC	CW	Marb	BF	REA	API	TI
15.9	-1.0	89.6	128.5	0.24	8.5	26.3	16.2	15.3	42.4	0.42	-0.030	0.77	148.7	90.4	
15	30	15	30	70	25	25	40	15	20	35	75	35	25	15	

Dam is a daughter of Capitalist 316 and the 437B cow. We have a large group of the 316 daughters in production and they are working for us. Check out his WW and YW ratios.



Lot 47

LRS 711K

43

BD: 3/8/22 • ASA#: 4046254 • Tattoo: 711K
1/2 SM 1/2 AN • Homo Polled • Homo Black

CCR WIDE RANGE 9005A

sire: **GIBBS 7382E BROAD RANGE**

SSF BLK LOUISE Y534

PA FULL POWER 1208

dam: **LRS MS FULL POWER 711E**

LRS MS KICKSTART 597C



Act. BW	78
BW Ratio	89
Adj WW	696
WW Ratio	104
Adj YW	1139
YW Ratio	94
WDA	3.27
ADG	2.79
Adj SC	40.7

Rank	CE	BW	WW	YW	ADG	MCE	Milk	STAY	DOC	CW	Marb	BF	REA	API	TI
16.6	-1.9	82.6	134.2	0.32	9.5	21.9	13.5	11.2	35.8	0.46	0.035	0.70	147.4	88.1	
10	20	30	20	20	15	65	70	70	40	30	99	50	25	20	

Heifer bull with some added performance hitting the scales this fall at over 725 lbs of actual weight and ratioed 104 in his contemporary group

LRS 774K

44

BD: 3/14/22 • ASA#: 4046278 • Tattoo: 774K
5/8 SM 3/8 AN • Homo Polled • Homo Black

RBS BOISE B63

sire: **LRS BADLANDS 401F**

LRS MS TEN X 401B

LRS ICONIC 303C

dam: **LRS MS ICONIC 774E**

LRS MS SHARPERIMAGE 234Z



Act. BW	84
BW Ratio	96
Adj WW	643
WW Ratio	96
Adj YW	1181
YW Ratio	98
WDA	3.26
ADG	3.39
Adj SC	34.0

Rank	CE	BW	WW	YW	ADG	MCE	Milk	STAY	DOC	CW	Marb	BF	REA	API	TI
13.5	-0.7	78.0	115.2	0.23	9.6	22.5	19.0	14.2	41.7	0.49	-0.024	0.62	150.5	84.1	
40	35	45	60	75	15	60	15	25	25	25	75	65	20	35	

You will find this bull in the pen with his big hip and being square made. Excellent docility and stayability is built into him.

LRS 064K

46

BD: 2/25/22 • ASA#: 4046393 • Tattoo: 064K
5/8 SM 3/8 AN • Homo Polled • Homo Black

WS PROCLAMATION E202

sire: **307 BACKROADS 736G**

PANNELL MISS 736

LRS BADLANDS 401F

dam: **LRS MS BADLANDS 064H**

LRS MS FINALE 330A



Act. BW	86
BW Ratio	105
Adj WW	685
WW Ratio	106
Adj YW	1252
YW Ratio	109
WDA	3.21
ADG	3.60
Adj SC	33.1

Rank	CE	BW	WW	YW	ADG	MCE	Milk	STAY	DOC	CW	Marb	BF	REA	API	TI
13.0	-0.1	82.3	124.2	0.26	8.9	28.5	17.5	15.5	32.6	0.65	-0.002	0.36	155.9	90.0	
45	45	30	40	55	20	15	25	15	50	10	95	95	15	15	

Plenty of the convenience traits here with his Stayability, Docility, and maternal calving ease scores, but still came in off his first calf heifer at almost 700 lbs and has kept it going.

LRS 445K

47

BD: 3/10/22 • ASA#: 4046207 • Tattoo: 445K
PB SM • Homo Polled • Homo Black

CCR WIDE RANGE 9005A

sire: **GIBBS 7382E BROAD RANGE**

SSF BLK LOUISE Y534

HOOK'S EAGLE 6E

dam: **LRS MS EAGLE 983G**

LRS MS CLASS ACT 437B



Act. BW	92
BW Ratio	ET
Adj WW	618
WW Ratio	ET
Adj YW	1053
YW Ratio	ET
WDA	2.95
ADG	2.76
Adj SC	35.8

Rank	CE	BW	WW	YW	ADG	MCE	Milk	STAY	DOC	CW	Marb	BF	REA	API	TI
14.1	-2.2	91.9	151.1	0.37	7.6	23.4	17.9	17.3	54.2	0.44	-0.034	1.27	169.6	99.6	
15	5	10	4	2	20	55	35	3	2	10	99	3	4	3	

This is an interesting bull. A son of the 983G cow who is the dam of lots 1-4 and also his full brother who sells as lot 13. If you ever wonder the importance of a good recip cow, this is a prime example. He was basically orphaned this summer as his mom quit milking and has been doing nothing but trying to play catch up on his own since we got them on feed. Study this bulls phenotype and he is golden. Study his EPDs and he is lock the gates to keep the jealous neighbors away. Actual weights might not blow you away, but everything else will, and again, we feel that it's not his own fault. On a good recip he could top the sale. Could possibly be a heifer bull.

48

LRS 822K

BD: 3/14/22 • ASA#: 4046294 • Tattoo: 822K
1/2 SM 1/2 AN • Homo Polled • Homo Black

MAR INNOVATION 251

sire: LRS TOPSHELF 902F

LRS MS TOP GRADE 303A

CCR PAYDAY 0320C

dam: LRS MS PAYDAY 822F

LRS MS TIME ZONE 237Z



Act. BW	96
BW Ratio	111
Adj WW	702
WW Ratio	105
Adj YW	1240
YW Ratio	102
WDA	3.44
ADG	3.40
Adj SC	38.5

Rank	CE	BW	WW	YW	ADG	MCE	Milk	STAY	DOC	CW	Marb	BF	REA	API	TI
EPDs	12.9	-0.3	73.8	118.6	0.28	9.9	22.6	15.9	13.4	26.1	0.51	-0.009	0.28	138.1	79.4
45	40	60	50	40	10	55	45	35	75	25	95	99	40	50	

A standout calf all summer as we would go through the pastures with his excellent phenotype and still is easy to spot in the pens. Hit the scales this fall over 700 lbs and has kept on gaining.



Lot 48

49

LRS 515K

BD: 3/26/22 • ASA#: 4046478 • Tattoo: 515K
5/8 SM 3/8 AN • Homo Polled • Homo Black

LRS ADJUSTER 793Y

sire: ELLIOTT F524

LRS MS FULL POWER 5129C

BDV DATELINE 150Y

dam: LRS MS DATELINE 515C

LRS MS OLD SCHOOL 157Y

Act. BW	82
BW Ratio	TW
Adj WW	684
WW Ratio	TW
Adj YW	1161
YW Ratio	TW
WDA	3.36
ADG	3.00
Adj SC	38.7

Rank	CE	BW	WW	YW	ADG	MCE	Milk	STAY	DOC	CW	Marb	BF	REA	API	TI
EPDs	7.7	2.2	82.4	126.3	0.27	3.8	26.6	18.1	16.1	25.6	0.06	-0.054	0.37	115.3	72.5
95	90	30	35	50	95	25	20	10	75	95	35	95	80	75	

Born a twin. His dam is a calf raiser with her 108 nursing ratio and 109 yearling ratio.

51

LRS 6030K

BD: 3/14/22 • ASA#: 4046247 • Tattoo: 6030K
PB SM • Homo Polled • Homo Black

HOOK'S EAGLE 6E

sire: LRS FALCON 442G

LRS MS CLASS ACT 437B

LRS ELEVATE 213B

dam: LRS MS ELEVATE 6030D

LRS MS SHRPR IMAGE 3012A



Act. BW	82
BW Ratio	93
Adj WW	636
WW Ratio	95
Adj YW	1124
YW Ratio	95
WDA	3.14
ADG	3.10
Adj SC	40.5

Rank	CE	BW	WW	YW	ADG	MCE	Milk	STAY	DOC	CW	Marb	BF	REA	API	TI
EPDs	14.0	-1.2	84.4	136.3	0.32	7.2	25.1	17.8	17.0	38.0	0.26	-0.061	0.99	142.9	84.9
15	10	30	15	10	25	40	35	4	25	30	85	30	30	30	

Heifer bull. We actually tried to picture this bull. He is gentle gentle. It did not work very well. Sarah said in the picture pen, if someone says to me they need a really gentle bull, he will top my list. His docility EPD matches his personality but check out all his EPDs and he does a lot of things right for being a heifer bull.

53

LRS 071K

BD: 2/24/22 • ASA#: 4046388 • Tattoo: 071K
1/2 SM 1/2 AN • Homo Polled • Homo Black

TEHAMA UPWARD Y238

sire: TEHAMA TAHOE B767

TEHAMA MARY BLACKBIRD Y684

NLC GEN TEN 82E

dam: LRS MS GEN TEN 071H

LRS MS CLASS ACT 437B



Act. BW	82
BW Ratio	100
Adj WW	683
WW Ratio	106
Adj YW	1251
YW Ratio	109
WDA	3.20
ADG	3.61
Adj SC	36.5

Rank	CE	BW	WW	YW	ADG	MCE	Milk	STAY	DOC	CW	Marb	BF	REA	API	TI
EPDs	11.3	0.0	84.7	142.4	0.36	2.4	26.4	17.1	15.0	45.9	0.46	-0.037	0.82	142.0	85.8
70	45	25	15	5	99	25	30	20	15	30	65	25	35	25	

Tahoe son who ratioed 109 at a year. Dam traces back to the 437B cow so it is no surprise the performance is real and ranks well for both Marbling and REA as well.

50

LRS 9159K

BD: 3/15/22 • ASA#: 4046376 • Tattoo: 9159K
3/4 SM 1/4 AN • Homo Polled • Homo Black

RBS BOISE B63

sire: LRS BADLANDS 401F

LRS MS TEN X 401B

LRS ICONIC 303C

dam: LRS MS ICONIC 9159G

LRS MS OLIE 078X



Act. BW	82
BW Ratio	98
Adj WW	666
WW Ratio	100
Adj YW	1175
YW Ratio	100
WDA	3.18
ADG	3.22
Adj SC	37.1

Rank	CE	BW	WW	YW	ADG	MCE	Milk	STAY	DOC	CW	Marb	BF	REA	API	TI
EPDs	14.3	-0.3	77.1	107.3	0.19	6.3	25.6	18.1	17.4	34.5	0.54	-0.092	0.77	151.6	85.5
30	40	50	75	95	60	30	20	5	45	20	4	35	20	30	

Carcass trait improver which is no surprise after his sire Badlands has been proven out with 33 actual carcass scores submitted to the database. Does that while also maintaining great maternal qualities and traces right back to the 078X cow

52

LRS 811K

BD: 3/11/22 • ASA#: 4046317 • Tattoo: 811K
1/2 SM 1/2 AN • Hetero Polled • Homo Black

MAR INNOVATION 251

sire: LRS TOPSHELF 902F

LRS MS TOPGRADE 303A

GCCR EASY ANSWER Y108

dam: LRS MS EASY ANSWER 811F

BDV MS IMPACT D145



Act. BW	88
BW Ratio	101
Adj WW	650
WW Ratio	98
Adj YW	1230
YW Ratio	104
WDA	3.32
ADG	3.65
Adj SC	33.4

Rank	CE	BW	WW	YW	ADG	MCE	Milk	STAY	DOC	CW	Marb	BF	REA	API	TI
EPDs	14.1	0.2	86.8	135.6	0.30	8.5	21.8	13.1	12.2	58.1	0.41	-0.025	0.63	132.9	84.3
30	50	20	20	30	25	65	70	55	3	40	75	60	50	30	

Dam is maintaining a 368 day caving interval and has a nursing and yearling ratio of over 100 for both traits. Her other bull calf made the bull sale last year and daughter is in the herd as well.

54

LRS 065K

BD: 3/1/22 • ASA#: 4046406 • Tattoo: 065K
1/2 SM 1/2 AN • Homo Polled • Homo Black

WS PROCLAMATION E202

sire: 307 BACKROADS 736G

PANNELL MISS 736

BASIN RAINMAKER 4404

dam: LRS MS RAINMAKER 065H

LRS MS CLASS ACT 5118C



Act. BW	102
BW Ratio	123
Adj WW	690
WW Ratio	107
Adj YW	1171
YW Ratio	102
WDA	3.11
ADG	3.05
Adj SC	38.3

Rank	CE	BW	WW	YW	ADG	MCE	Milk	STAY	DOC	CW	Marb	BF	REA	API	TI
EPDs	7.1	1.0	82.8	129.5	0.29	2.1	25.8	14.8	13.9	44.5	0.33	-0.038	0.61	125.3	80.8
99	70	30	30	35	99	30	55	30	15	50	65	65	60	45	

Out of a first calf Rainmaker daughter who is off to a great start with this calf who weighed almost 700 lbs to ratio 107 this past fall. It was an extremely hot and dry 2nd part of the summer, and we were happy with how the cows held up weaning as late as we did.

LASSLE RANCH SIMMENTALS

LRs 116K

55

BD: 3/11/22 • ASA#: 4046495 • Tattoo: 116K
1/2 SM 1/2 AN • Homo Polled • Homo Black

CONNEALY COMRADE 1385

sire: MCCONNELL ALTITUDE 3114

MA BEAUTY 0156

MCM TOP GRADE 018X

dam: LRS MS TOPGRADE 3021A

LRS MS DAKOTA 559R

Act. BW	86
BW Ratio	ET
Adj WW	669
WW Ratio	ET
Adj YW	1098
YW Ratio	ET
WDA	3.16
ADG	2.72
Adj SC	36.9

Rank	CE	BW	WW	YW	ADG	MCE	Milk	STAY	DOC	CW	Marb	BF	REA	API	TI
70	11.3	-0.4	80.4	123.8	0.27	6.1	23.1	12.3	16.0	43.2	0.60	0.009	0.50	135.6	85.1
70	40	40	40	40	50	65	50	80	10	20	15	99	85	45	30

ET calf out of the old 3021 Top Grade donor cow. Sired by the outcross Angus bull Altitude bull who is a good pap test bull. We never used a lot of Altitude semen but have ended up with some nice daughters - one is the dam of the lot 23 bull.



Lot 58

LRs 080K

59

BD: 2/20/22 • ASA#: 4046417 • Tattoo: 080K
5/8 SM 3/8 AN • Homo Polled • Homo Black

WERNER FLAT TOP 4136

sire: TJ FLAT IRON 259G

TJ 33Y

LRS BADLANDS 401F

dam: LRS MS BADLANDS 080H

LRS MS EFFECTIVE 7109E



Act. BW	80
BW Ratio	98
Adj WW	675
WW Ratio	105
Adj YW	1112
YW Ratio	97
WDA	2.93
ADG	2.78
Adj SC	34.3

Rank	CE	BW	WW	YW	ADG	MCE	Milk	STAY	DOC	CW	Marb	BF	REA	API	TI
25	14.9	-1.1	79.7	122.1	0.27	8.7	31.7	17.5	0.9	36.3	0.62	-0.033	0.62	159.2	90.5
25	30	40	45	50	20	3	25	99	40	15	65	65	15	15	15

This bull and lot 60 are the only 2 Flat Iron calves in the offering. The calves were very well received last year at our sale and continue to be very popular around the country and it is easy to see why.



Lot 61

LRs 936K

56

BD: 3/13/22 • ASA#: 4046351 • Tattoo: 936K
5/8 SM 3/8 AN • Homo Polled • Homo Black

RBS BOISE B63

sire: LRS BADLANDS 401F

LRS MS TEN X 401B

LD CAPITALIST 316

dam: LRS MS CAPITALIST 316 936G

LRS MS CLASS ACT 407B



Act. BW	84
BW Ratio	99
Adj WW	692
WW Ratio	104
Adj YW	1167
YW Ratio	99
WDA	3.24
ADG	3.00
Adj SC	35.0

Rank	CE	BW	WW	YW	ADG	MCE	Milk	STAY	DOC	CW	Marb	BF	REA	API	TI
55	12.2	-2.2	88.8	129.8	0.26	8.4	22.3	15.7	14.2	35.6	0.59	-0.026	0.66	154.4	94.7
55	15	15	15	30	55	25	60	45	25	40	15	75	55	15	10

Moderate Birth, good growth, and scores well in the indexes. Froehlich's in North Dakota bought the Badlands bull and have been very pleased with him and what he is doing in their program. Still sound and great footed as a coming 5 year old and maintains great flesh throughout the year.

LRs 947K

58

BD: 3/16/22 • ASA#: 4046354 • Tattoo: 947K
1/2 SM 1/2 AN • Homo Polled • Homo Black

MAR INNOVATION 251

sire: LRS TOPSHELF 902F

LRS MS TOPGRADE 303A

LD CAPITALIST 316

dam: LRS MS CAPITALIST 316 947G

LRS MS GRAVITY 758E



Act. BW	84
BW Ratio	99
Adj WW	649
WW Ratio	98
Adj YW	1328
YW Ratio	113
WDA	3.47
ADG	4.27
Adj SC	34.1

Rank	CE	BW	WW	YW	ADG	MCE	Milk	STAY	DOC	CW	Marb	BF	REA	API	TI
35	13.9	0.6	87.9	138.1	0.31	10.1	15.5	13.7	12.3	54.7	0.12	-0.034	0.86	118.2	77.1
35	60	15	15	15	25	10	99	65	50	4	90	65	20	75	60

When this bull entered the clipping chute, our clipper said he will nickname him Frank the Tank. He is not the largest framed bull in the offering, but he is the same height and width no matter what way you drop him - but with his 113 YW ratio, he will be hard to pick up.

LRs 081K

60

BD: 3/1/22 • ASA#: 4046413 • Tattoo: 081K
1/2 SM 1/2 AN • Homo Polled • Homo Black

WERNER FLAT TOP 4136

sire: TJ FLAT IRON 259G

TJ 33Y

LRS FAKE NEWS 437E

dam: LRS MS FAKE NEWS 081H

LRS MS TOP TEN 640D



Act. BW	92
BW Ratio	112
Adj WW	659
WW Ratio	102
Adj YW	1215
YW Ratio	106
WDA	3.10
ADG	3.53
Adj SC	35.8

Rank	CE	BW	WW	YW	ADG	MCE	Milk	STAY	DOC	CW	Marb	BF	REA	API	TI
99	7.1	1.9	96.2	150.4	0.34	1.8	28.3	17.6	8.0	51.8	0.45	-0.013	0.43	140.4	90.2
99	85	4	5	10	99	15	25	95	10	30	85	90	35	15	15

Another cow who did a great job with her first calf. Take these 2 half brothers home and they will sire a great set of uniform calves. They are 2 peas in a pod.

LRs 737K

61

BD: 3/11/22 • ASA#: 4046264 • Tattoo: 737K
5/8 SM 3/8 AN • Homo Polled • Homo Black

RBS BOISE B63

sire: LRS BADLANDS 401F

LRS MS TEN X 401B

J BAR J NIGHTRIDE 225Z

dam: LRS MS NIGHTRIDE 737E

LRS MS TURNINGPOINT 561C

Act. BW	90
BW Ratio	103
Adj WW	647
WW Ratio	96
Adj YW	1075
YW Ratio	89
WDA	3.07
ADG	2.70
Adj SC	35.4

Rank	CE	BW	WW	YW	ADG	MCE	Milk	STAY	DOC	CW	Marb	BF	REA	API	TI
75	10.8	0.9	73.6	103.3	0.19	7.2	22.2	13.4	15.4	27.2	0.65	-0.033	0.58	139.4	83.1
75	65	65	65	80	95	45	60	70	15	70	10	65	70	40	35

Square made deep sided bull showing good masculinity which is no surprise being sired by Badlands. Out of a productive cow family tracing back to the dam of LRS Range Boss.

62

LRS 964K

BD: 3/14/22 • ASA#: 4046331 • Tattoo: 964K
3/4 SM 1/4 AN • Homo Polled • Homo Black

CCR WIDE RANGE 9005A

sire: GIBBS 7382E BROAD RANGE

SSF BLK LOUISE Y534

LD CAPITALIST 316

dam: LRS MS CAPITALIST 964G

LRS MS TOPGRADE 3015A



Act. BW	78
BW Ratio	92
Adj WW	654
WW Ratio	98
Adj YW	1127
YW Ratio	96
WDA	3.10
ADG	2.99
Adj SC	37.0

Rank	CE	BW	WW	YW	ADG	MCE	Milk	STAY	DOC	CW	Marb	BF	REA	API	TI
	13.9	-3.9	69.4	114.9	0.28	10.0	22.4	14.6	12.2	37.9	0.49	0.008	0.71	146.6	83.3
	35	4	80	60	40	10	60	60	55	35	25	99	45	25	35

Dam is a daughter of the old 3015A donor cow. Her sons and daughters are not performance machines, but more maternally focused with a nice phenotype, combining moderate birthweights with sensible growth for environments that can't handle the extreme growth traits.

64

LRS 381K

BD: 3/15/22 • ASA#: 4046476 • Tattoo: 381K
1/4 SM 3/4 AN • Polled • Homo Black

HA COWBOY UP 5405

sire: OPP DESPERADO 807

OPP PRIDE LADY Z18

TNT FINALE W241

dam: LRS MS FINALE 381A

LRS MS BISMARCK 117Y

Act. BW	74
BW Ratio	TW
Adj WW	685
WW Ratio	TW
Adj YW	1254
YW Ratio	TW
WDA	3.47
ADG	3.56
Adj SC	39.6

Rank	CE	BW	WW	YW	ADG	MCE	Milk	STAY	DOC	CW	Marb	BF	REA	API	TI
	14.7	0.0	92.3	147.3	0.34	7.9	20.3	13.0	11.2	53.8	0.31	0.016	0.46	129.9	84.7
	25	45	10	10	10	30	80	75	70	5	55	99	85	55	30

Low percentage bull. We typically don't sell many of these, and initially kept him to be a spare bull only because of him being a 1/4 blood - but here he is with awesome phenotype, big testicles and gaining great. Stout made and super deep sided out of a 9 year old cow that has put many bulls through the sales over the years.

66

LRS CBL 48K

BD: 3/20/22 • ASA#: 4106692 • Tattoo: 48K
PB SM • Homo Polled • Homo Black

HOOK'S ENCORE 65E

sire: NLC ZUGABE 11H

NLC F29 FOKKA

LRS 1018A

dam: CBL MS 1018 C595

LRS MS ROMEO 097X

Act. BW	94
BW Ratio	115
Adj WW	624
WW Ratio	92
Adj YW	1085
YW Ratio	95
WDA	3.06
ADG	2.92
Adj SC	33.8

Rank	CE	BW	WW	YW	ADG	MCE	Milk	STAY	DOC	CW	Marb	BF	REA	API	TI
	9.7	2.8	82.3	119.7	0.23	5.6	19.5	18.2	13.5	24.2	0.22	-0.056	0.90	125.4	75.7
	70	80	35	45	65	55	85	30	25	70	35	95	50	65	65

Out of an 8 year old cow who who has sold multiple bulls through the sales over the years. Sire would be an outcross pedigree to many of our genetics we have used over the years. RightChoice Score pending.

67

LRS CBL 28K

BD: 3/15/22 • ASA#: 4106682 • Tattoo: 28K
1/2 SM 1/2 AN • Homo Polled • Homo Black

HOOK'S EAGLE 6E

sire: LRS FALCON 442G

LRS MS CLASS ACT 437B

PA FULL POWER 1208

dam: CBA MS FULL POWER D336

CBA QUEEN DENALI Z22

Act. BW	84
BW Ratio	101
Adj WW	601
WW Ratio	89
Adj YW	1058
YW Ratio	93
WDA	2.98
ADG	2.88
Adj SC	36.1

Rank	CE	BW	WW	YW	ADG	MCE	Milk	STAY	DOC	CW	Marb	BF	REA	API	TI
	13.5	-1.5	80.3	132.1	0.32	5.1	21.5	17.6	15.0	37.7	0.59	-0.013	0.74	153.1	87.6
	40	25	40	25	20	80	70	25	20	35	15	85	40	20	20

Another true F1 half blood out of a purebred Angus cow who does not stand out in one single area but does a lot of things right. RightChoice Score pending.

63

LRS CBL 71K

BD: 3/23/22 • ASA#: 4106698 • Tattoo: 71K
3/4 SM 1/4 AN • Homo Polled • Homo Black

HOOK'S EAGLE 6E

sire: LRS FALCON 442G

LRS MS CLASS ACT 437B

GW ROBUST 605Z

dam: CBL MS ROBUST C415

ASCHE MS MSTR DESGN 22

Act. BW	89
BW Ratio	109
Adj WW	674
WW Ratio	99
Adj YW	1059
YW Ratio	93
WDA	3.12
ADG	2.44
Adj SC	37.0

Rank	CE	BW	WW	YW	ADG	MCE	Milk	STAY	DOC	CW	Marb	BF	REA	API	TI
	9.9	1.1	89.6	142.3	0.33	2.9	25.2	18.1	15.0	47.5	0.41	-0.069	1.09	144.5	88.5
	85	70	15	15	15	99	35	20	20	15	40	25	4	30	20

Looking to add some carcass traits, check this guy out with his great rankings for ribeye and Marbling. Dam is coming 8 years old and has a nursing ratio of 108. RightChoice Score pending.

65

LRS 004K

BD: 2/26/22 • ASA#: 4046423 • Tattoo: 004K
5/8 SM 3/8 AN • Homo Polled • Homo Black

WS PROCLAMATION E202

sire: 307 BACKROADS 736G

PANNELL MISS 736

HOOK'S EAGLE 6E

dam: LRS MS EAGLE 004H

LRS MS SUBSTANCE 866F



Act. BW	82
BW Ratio	100
Adj WW	624
WW Ratio	94
Adj YW	1203
YW Ratio	102
WDA	3.01
ADG	3.69
Adj SC	36.6

Rank	CE	BW	WW	YW	ADG	MCE	Milk	STAY	DOC	CW	Marb	BF	REA	API	TI
	14.9	-1.3	79.2	119.6	0.25	8.9	23.3	17.8	13.3	18.5	0.31	-0.032	0.56	142.5	81.9
	25	25	40	50	65	20	50	25	40	90	55	65	75	35	40

Heifer bull. All the makings of a great heifer bull with his CE and BW EPDs as well as his MCE and stayability ranking.



LOT 59 WITH HIS DAM, LATE FALL

68

LRS CBL 20K

BD: 3/13/22 • ASA#: 4106677 • Tattoo: 20K
5/8 SM 3/8 AN • Homo Polled • Homo Black

RBS BOISE B63

sire: LRS BADLANDS 401F

LRS MS TEN X 401B

LRS TOP TEN 104A

dam: CBL MS TOP TEN F268

CBL MS. FINALE A223

Act. BW	79
BW Ratio	97
Adj WW	652
WW Ratio	96
Adj YW	1053
YW Ratio	92
WDA	3.00
ADG	2.54
Adj SC	35.0

Rank	CE	BW	WW	YW	ADG	MCE	Milk	STAY	DOC	CW	Marb	BF	REA	API	TI
	11.9	0.4	81.4	116.9	0.22	7.2	21.8	10.8	13.9	35.3	0.53	-0.053	0.67	133.7	85.9
	60	55	35	55	80	45	65	90	30	40	20	35	55	45	25

Long sided structurally sound Badlands calf who gets out and covers his tracks. Badlands progeny are not always the highest performance cattle, but he sires the right kind of cattle and the environment in eastern Montana can't always support the extreme growth. RightChoice Score pending.

LASSLE RANCH SIMMENTALS

LRS 9165K

69

BD: 3/11/22 • ASA#: 4046380 • Tattoo: 9165K
PB SM • Homo Polled • Homo Black

CCR WIDE RANGE 9005A

sire: GIBBS 7382E BROAD RANGE

SSF BLK LOUISE Y534

HOOK'S EAGLE 6E

dam: LRS MS EAGLE 9165G

LRS MS DUAL FOCUS 213Z



Act. BW	74
BW Ratio	89
Adj WW	664
WW Ratio	99
Adj YW	1111
YW Ratio	92
WDA	3.04
ADG	2.85
Adj SC	34.4

Rank	CE	BW	WW	YW	ADG	MCE	Milk	STAY	DOC	CW	Marb	BF	REA	API	TI
EPDs	15.2	-3.3	77.3	125.2	0.30	9.4	21.2	17.1	13.2	29.3	0.32	-0.014	0.95	146.7	83.9
10	2	55	35	20	5	70	40	30	50	20	99	35	25	30	30

Heifer bull. We have a group of these 3 year old embryo cows that are doing a great job this one being an Eagle back to the dam of Elevate. Excellent heifer bull prospect with added carcass merit.



LRS MS ICONIC 040H - DAM OF LOT 71



Lot 72



Lot 73

LRS 9162K

70

BD: 3/11/22 • ASA#: 4046373 • Tattoo: 9162K
1/2 SM 1/2 AN • Homo Polled • Homo Black

TEHAMA UPWARD Y238

sire: TEHAMA TAHOE B767

TEHAMA MARY BLACKBIRD Y684

LRS ELEVATE 213B

dam: LRS MS ELEVATE 9162G

LRS MS OLIE 078X



Act. BW	84
BW Ratio	99
Adj WW	638
WW Ratio	96
Adj YW	1192
YW Ratio	101
WDA	3.17
ADG	3.53
Adj SC	34.9

Rank	CE	BW	WW	YW	ADG	MCE	Milk	STAY	DOC	CW	Marb	BF	REA	API	TI
EPDs	13.3	-1.5	74.1	122.9	0.30	4.4	24.6	19.5	12.6	33.6	0.51	-0.028	0.49	149.6	82.1
40	25	60	40	30	90	40	10	45	45	25	75	85	25	40	40

Tahoe son who goes back to 078X. She is mentioned numerous times again this year as she was a true maternal matriarch for us with lots of daughters and granddaughters in the herd now. Go ahead and keep every daughter this bull sires.

LRS 040K

71

BD: 3/15/22 • ASA#: 4046386 • Tattoo: 040K
5/8 SM 3/8 AN • Homo Polled • Homo Black

NLC COW BOSS 160C

sire: BSUM EINSTEIN 929G

TUEL MS EFFECTIVE 369A

LRS ICONIC 303C

dam: LRS MS ICONIC 040H

LRS MS BISMARCK 125Y



Act. BW	86
BW Ratio	105
Adj WW	655
WW Ratio	102
Adj YW	1185
YW Ratio	103
WDA	3.08
ADG	3.36
Adj SC	34.1

Rank	CE	BW	WW	YW	ADG	MCE	Milk	STAY	DOC	CW	Marb	BF	REA	API	TI
EPDs	18.2	0.2	88.1	131.0	0.27	10.2	18.0	15.7	15.8	35.1	0.40	-0.011	0.72	147.8	87.1
4	50	15	25	50	10	90	45	15	40	40	85	45	25	25	25

Heifer bull. Einstein was a bull we bought from Black Summit a few years back to use on heifers. Harper showed an Einstein sired steer calf this past summer and was Reserve Champion Steer at the county fair and Grand Champion Carcass steer at the Miles City Champion of Champions show.

LRS CBL 11K

72

BD: 3/13/22 • ASA#: 4106671 • Tattoo: 11K
1/2 SM 1/2 AN • Homo Polled • Homo Black

HOOK'S EAGLE 6E

sire: LRS FALCON 442G

LRS MS CLASS ACT 437B

MAR INNOVATION 251

dam: CBL MS INNOVATION F388

CBA QUEEN SHANNON 169

Act. BW	81
BW Ratio	99
Adj WW	746
WW Ratio	110
Adj YW	1316
YW Ratio	116
WDA	3.63
ADG	3.59
Adj SC	38.5

Rank	CE	BW	WW	YW	ADG	MCE	Milk	STAY	DOC	CW	Marb	BF	REA	API	TI
EPDs	12.6	-0.7	92.2	148.5	0.35	6.6	25.6	16.5	15.3	49.1	0.54	-0.012	0.88	150.1	92.8
50	35	10	10	10	55	30	35	15	10	20	85	20	20	10	10

You will easily find this Falcon sired bull and his brother lot 73 when you get into this pen. Really sound, Deep sided attractive bull who ratioed 110 this fall. Out of a purebred Angus cow, this one checks a lot of boxes. RightChoice Score pending.

LRS CBL 12K

73

BD: 3/13/22 • ASA#: 4106672 • Tattoo: 12K
1/2 SM 1/2 AN • Homo Polled • Homo Black

HOOK'S EAGLE 6E

sire: LRS FALCON 442G

LRS MS CLASS ACT 437B

OPP ARSENAL 550

dam: CBA MS ARSENAL E578

CBA MS TEN X B74

Act. BW	86
BW Ratio	104
Adj WW	716
WW Ratio	106
Adj YW	1380
YW Ratio	121
WDA	3.73
ADG	4.18
Adj SC	41.5

Rank	CE	BW	WW	YW	ADG	MCE	Milk	STAY	DOC	CW	Marb	BF	REA	API	TI
EPDs	14.5	-0.6	92.3	152.1	0.37	7.2	25.3	16.8	15.7	52.5	0.54	-0.020	0.87	153.7	93.3
25	35	10	4	4	45	30	35	15	10	20	85	20	20	10	10

Looks just like his brother above and also out of a purebred Angus cow. Just take both of these home and you will not be disappointed. RightChoice Score pending.

74

LRS 707K

BD: 3/9/22 • ASA#: 4046252 • Tattoo: 707K
1/2 SM 5/16 AN 3/16 MX • Homo Polled • Homo Black

MAR INNOVATION 251

sire: LRS TOPSHELF 902F

LRS MS TOPGRADE 303A

J BAR J NIGHTRIDE 225Z

dam: LRS MS NIGHTRIDE 707E

LRS MS INSIGHT 5126C



Act. BW	98
BW Ratio	114
Adj WW	615
WW Ratio	92
Adj YW	1258
YW Ratio	104
WDA	3.41
ADG	4.06
Adj SC	34.7

Rank	CE	BW	WW	YW	ADG	MCE	Milk	STAY	DOC	CW	Marb	BF	REA	API	TI
EPDs	10.1	0.5	93.1	150.3	0.36	6.5	14.7	17.1	8.7	57.2	0.57	-0.060	0.99	148.9	91.9
80	55	10	5	5	55	99	30	90	3	20	35	10	25	10	

Really coming on at test gaining over 4 lbs a day. With his carcass traits and gain - he is sure to sire a set of feeding cattle.



GRACE SHOWING AT THE 2022 AJSA NATIONAL CLASSIC • MADISON, WI

75

LRS 866K

BD: 3/9/22 • ASA#: 4046297 • Tattoo: 866K
5/8 SM 3/8 AN • Homo Polled • Homo Black

MAR INNOVATION 251

sire: LRS TOPSHELF 902F

LRS MS TOPGRADE 303A

GW-WBF SUBSTANCE 820Y

dam: LRS MS SUBSTANCE 866F

LRS MS SHRPRIMG 3016A



Act. BW	86
BW Ratio	100
Adj WW	672
WW Ratio	101
Adj YW	1290
YW Ratio	109
WDA	3.45
ADG	3.91
Adj SC	37.2

Rank	CE	BW	WW	YW	ADG	MCE	Milk	STAY	DOC	CW	Marb	BF	REA	API	TI
EPDs	13.6	1.0	89.9	144.3	0.34	9.0	19.4	13.0	13.4	38.4	0.33	-0.034	0.71	134.1	86.0
35	70	15	10	10	20	85	75	35	30	50	65	45	45	25	

Top shelf is no doubt our biggest sire group in the sale this year and it is easy to see why. The bulls have some added performance, and are good structured cattle. They do a lot of things right. We have kept a lot of daughters as well to add to the cowherd.



Lot 75

76

LRS CBL 34K

BD: 3/17/22 • ASA#: 4106685 • Tattoo: 34K
1/2 SM 1/2 AN • Polled • Black

MAR INNOVATION 251

sire: LRS TOPSHELF 902F

LRS MS TOPGRADE 303A

LRS TOP TEN 104A

dam: CBL MS TOP TEN D156

CBL MS PIONEER Z102

Act. BW	79
BW Ratio	96
Adj WW	709
WW Ratio	105
Adj YW	1283
YW Ratio	113
WDA	3.58
ADG	3.61
Adj SC	39.7

Rank	CE	BW	WW	YW	ADG	MCE	Milk	STAY	DOC	CW	Marb	BF	REA	API	TI
EPDs	13.0	-0.2	91.7	145.5	0.34	8.2	16.2	13.4	11.6	46.6	0.23	-0.029	0.66	131.0	85.3
45	45	10	10	10	30	99	70	60	15	70	75	55	50	30	

Dam has a calving interval of 357 days on 5 natural calves. Big set of testicles and ratioed 105 off the cow. Homo black and polled test pending. RightChoice Score pending.

77

LRS 331K

BD: 3/8/22 • ASA#: 4046192 • Tattoo: 331K
1/2 SM 1/2 AN • Homo Polled • Homo Black

TEHAMA UPWARD Y238

sire: TEHAMA TAHOE B767

TEHAMA MARY BLACKBIRD Y684

MCM TOP GRADE 018X

dam: LRS MS TOPGRADE 331A

LRS MS CLUBKING 1017Y



Act. BW	86
BW Ratio	97
Adj WW	678
WW Ratio	102
Adj YW	1264
YW Ratio	107
WDA	3.47
ADG	3.71
Adj SC	37.2

Rank	CE	BW	WW	YW	ADG	MCE	Milk	STAY	DOC	CW	Marb	BF	REA	API	TI
EPDs	12.3	-1.1	79.9	128.2	0.30	6.4	22.9	16.8	13.6	48.4	0.60	-0.046	0.74	149.4	87.1
55	30	40	30	30	60	55	35	35	10	15	50	40	25	25	

Tahoe son who needs to be appreciated for his depth, capacity and performance. Dam has a nursing and weaning ratio of 106.



HARPER AND "MUSIC"

HARPER AND "SPIKE"

78

LRS 662K

BD: 3/8/22 • ASA#: 4046239 • Tattoo: 662K
1/2 SM 1/2 AN • Homo Polled • Hetero Black

MAR INNOVATION 251

sire: LRS TOPSHELF 902F

LRS MS TOPGRADE 303A

LRS RANGE BOSS 901Z

dam: LRS MS RANGE BOSS 662D

LRS MS DUAL FOCUS 217Z



Act. BW	86
BW Ratio	98
Adj WW	720
WW Ratio	107
Adj YW	1197
YW Ratio	101
WDA	3.42
ADG	3.00
Adj SC	34.2

Rank	CE	BW	WW	YW	ADG	MCE	Milk	STAY	DOC	CW	Marb	BF	REA	API	TI
EPDs	12.4	1.7	99.8	155.8	0.35	5.3	10.1	12.3	17.0	49.3	0.25	-0.039	0.69	128.4	87.6
55	80	2	3	10	75	99	80	10	10	70	65	50	55	20	

Heterozygous Black. Weighed in this fall at 755 lbs of actual weight and ratioed 107

LASSLE RANCH SIMMENTALS

LRS 2022 FEEDLOT DATA

We again fed out a pen of cattle in 2022. We fed our heifers that we did not keep for replacements.

Lassle Ranch Simmentals Feedlot Data

89 head 2021 spring born heifers harvested on June 22, 2022

Average Age: 15.5 months old

Average HCW: 827 lbs

Average REA: 14.52 inches

Average YG: 2.4

97% Graded Choice and Prime

51% went CAB



LRS MS FRANCHISE 039H - DAM OF LOT 81



Lot 81

LRS CBL 18K

BD: 3/10/22 • ASA#: 4106676 • Tattoo: 18K
3/4 SM 1/4 AN • Homo Polled • Homo Black

HOOK'S EAGLE 6E

sire: LRS FALCON 442G

LRS MS CLASS ACT 437B

LRS ELEVATE 213B

dam: CBL MS ELEVATE F238

CBL MS FULL POWER C45

Act. BW	68
BW Ratio	84
Adj WW	720
WW Ratio	106
Adj YW	1212
YW Ratio	106
WDA	3.42
ADG	3.09
Adj SC	37.3

Rank	CE	BW	WW	YW	ADG	MCE	Milk	STAY	DOC	CW	Marb	BF	REA	API	TI
30	14.4	-2.1	91.9	149.7	0.36	6.3	27.1	18.1	12.0	46.4	0.48	-0.037	1.07	160.8	96.2

Balanced EPDs all across the board and ranks well in the indexes with his 106 WW and YW Ratios. RightChoice Score pending.

LRS 067K

79

BD: 2/18/22 • ASA#: 4046458 • Tattoo: 067K
3/4 SM 1/4 AN • Homo Polled • Homo Black

NLC COW BOSS 160C

sire: BSUM EINSTEIN 929G

TUEL MS EFFECTIVE 369A

NLC GEN TEN 82E

dam: LRS MS NOODLES 067H

LRS MS JOY 661D

Act. BW	90
BW Ratio	111
Adj WW	740
WW Ratio	100
Adj YW	1157
YW Ratio	96
WDA	3.08
ADG	2.66
Adj SC	35.7

Rank	CE	BW	WW	YW	ADG	MCE	Milk	STAY	DOC	CW	Marb	BF	REA	API	TI
35	13.7	1.1	77.3	103.8	0.17	6.3	24.6	17.1	16.4	24.1	0.40	-0.052	0.69	137.4	79.6

Harper's bull out of her first calf heifer. Peanut is his name and like Snowball she is very proud of both of them. If you are fortunate to take either one home, you will be her friend for life. Her cow "Noodles" did a great job on this calf with his 740 adjusted WW. Great disposition in this fella and I would expect his daughters to be his greatest strength.

LRS 6020K

80

BD: 3/12/22 • ASA#: 4046243 • Tattoo: 6020K
PB SM • Homo Polled • Homo Black

HOOK'S EAGLE 6E

sire: LRS FALCON 442G

LRS MS CLASS ACT 437B

LRS ELEVATE 213B

dam: LRS MS ELEVATE 6020D

LRS MS SHRPR IMAGE 3012A



Act. BW	90
BW Ratio	103
Adj WW	671
WW Ratio	100
Adj YW	1181
YW Ratio	98
WDA	3.30
ADG	3.24
Adj SC	32.9

Rank	CE	BW	WW	YW	ADG	MCE	Milk	STAY	DOC	CW	Marb	BF	REA	API	TI
55	11.0	1.3	104.7	167.3	0.39	5.1	21.5	18.2	12.6	47.3	0.26	-0.070	1.28	143.9	93.8

Go ahead and keep every daughter out of this bull and also check out his carcass scores. His dam is beautiful cow with a great udder who we have flushed in the past sold many sons out of.

LRS 039K

81

BD: 2/20/22 • ASA#: 4046402 • Tattoo: 039K
3/4 SM 1/4 AN • Homo Polled • Homo Black

CCR WIDE RANGE 9005A

sire: GIBBS 7382E BROAD RANGE

SSF BLK LOUISE Y534

TJ FRANCHISE 451D

dam: LRS MS FRANCHISE 039H

LRS MS TURNINGPOINT 539C



Act. BW	84
BW Ratio	103
Adj WW	612
WW Ratio	95
Adj YW	1249
YW Ratio	109
WDA	3.07
ADG	4.03
Adj SC	37.8

Rank	CE	BW	WW	YW	ADG	MCE	Milk	STAY	DOC	CW	Marb	BF	REA	API	TI
40	13.4	-0.8	87.7	140.8	0.33	8.0	22.9	14.9	13.0	56.6	0.28	-0.008	1.17	137.2	86.0

Big topped, square made bull who easily catches your eye. Does carry some white on his underline, but makes up for that with his muscle shape and soundness

LRS 8008K

83

BD: 3/23/22 • ASA#: 4046290 • Tattoo: 8008K
5/8 SM 3/8 AN • Hetero Polled • Homo Black

BASIN RAINMAKER 440A

sire: LRS WINDCHILL 6025H

LRS MS ELEVATE 6025D

LBR NEW FRONT D211

dam: LRS MS NEW FRONT 8008F

LRS MS EMBLAZON 108Y



Act. BW	92
BW Ratio	107
Adj WW	736
WW Ratio	110
Adj YW	1288
YW Ratio	106
WDA	3.59
ADG	3.48
Adj SC	37.5

Rank	CE	BW	WW	YW	ADG	MCE	Milk	STAY	DOC	CW	Marb	BF	REA	API	TI
60	11.7	2.5	99.9	160.8	0.38	6.5	23.2	16.2	14.0	61.6	0.24	-0.046	0.78	134.3	88.0

His sire Windchill is a full brother to the lot 26 bull and they have the same look to them. Windchill was a high performance bull and this guy is cut from the same mold with his 110 WW ratio.

84

LRS 303K

BD: 3/19/22 • ASA#: 4046189 • Tattoo: 303K
PB SM • Homo Polled • Homo Black

HOOK'S BLACK HAWK 50B

sire: HOOK'S EAGLE 6E

HOOK'S CRYSTAL 1C

MCM TOP GRADE 018X

dam: LRS MS TOPGRADE 303A

LRS MS CLUBKING 1007Y



Act. BW	80
BW Ratio	91
Adj WW	674
WW Ratio	100
Adj YW	1158
YW Ratio	98
WDA	3.26
ADG	3.07
Adj SC	33.3

Rank	CE	BW	WW	YW	ADG	MCE	Milk	STAY	DOC	CW	Marb	BF	REA	API	TI
EPDs	13.9	-0.6	98.3	154.3	0.35	7.3	18.3	19.0	15.6	41.3	0.29	-0.088	1.03	151.5	92.9
	20	15	4	3	4	25	90	20	10	15	25	50	25	20	10

Heifer bull. The last calf to sell out of the old 303A cow as we sold her this past fall. She left us numerous daughters in the herd, and of course is the dam to Top Shelf and the LRS Iconic bull. A full brother to this bull sold to Maloney's a couple years ago as well as a bull to Hebert's in Mississippi. Deep sided. maternally focused with a great set of EPDs



Lot 84

85

LRS 328K

BD: 4/1/22 • ASA#: 4046190 • Tattoo: 328K
PB SM • Homo Polled • Homo Black

THR HIGH POINT 8533F

sire: LRS FIREBALL 3021H

LRS MS TOPGRADE 3021A

LRS TIMETRAVELER 37X

dam: LRS MS TIMETRAVELER 328A

LRS MS LIMELIGHT 9015W



Act. BW	90
BW Ratio	103
Adj WW	667
WW Ratio	100
Adj YW	1132
YW Ratio	96
WDA	3.23
ADG	2.94
Adj SC	35.5

Rank	CE	BW	WW	YW	ADG	MCE	Milk	STAY	DOC	CW	Marb	BF	REA	API	TI
EPDs	8.5	2.7	76.5	117.4	0.26	5.2	23.1	20.1	11.7	24.1	0.26	-0.056	0.61	128.5	73.6
	85	80	60	50	40	65	55	10	50	70	30	95	99	55	75

Just an April 1st calf, but don't let him fool you. Out of the old 328A cow who carries a 110 nursing ratio and 108 yearling ratio. He is a little younger, but that might be his only fault. Really study his structure and build and there is a lot to like.



Lot 85

86

LRS CBL 93K

BD: 3/26/22 • ASA#: 4106700 • Tattoo: 93K
1/2 SM 1/2 AN • Homo Polled • Homo Black

LD CAPITALIST 316

sire: LRS TYCOON 120H

LRS MS CLASS ACT 437B

LRS ICONIC 303C

dam: CBL MS ICONIC F228

CBL MS 810 C405

Act. BW	87
BW Ratio	107
Adj WW	708
WW Ratio	104
Adj YW	1202
YW Ratio	106
WDA	3.39
ADG	3.12
Adj SC	37.7

Rank	CE	BW	WW	YW	ADG	MCE	Milk	STAY	DOC	CW	Marb	BF	REA	API	TI
EPDs	10.9	1.4	92.1	146.0	0.34	5.5	24.2	13.9	13.3	50.3	0.37	-0.022	0.83	134.3	87.7
	75	75	10	10	10	75	40	65	40	10	45	75	25	45	20

Plenty of performance in this late March calf. Tycoon was a top selling bull in our sale a few years back to Cracker Box Livestock. His Iconic dam is over 100 for both WW and YW ratios. RightChoice Score pending.



Lot 86

87

LRS 087K

BD: 2/22/22 • ASA#: 4046426 • Tattoo: 087K
5/8 SM 3/8 AN • Homo Polled • Homo Black

WS PROCLAMATION E202

sire: 307 BACKROADS 736G

PANNELL MISS 736

SOUTHERN COMMANDER 1504E

dam: LRS MS COMMANDER 087H

LRS MS ELEVATE 896F



Act. BW	78
BW Ratio	96
Adj WW	699
WW Ratio	109
Adj YW	1251
YW Ratio	109
WDA	3.22
ADG	3.51
Adj SC	35.9

Rank	CE	BW	WW	YW	ADG	MCE	Milk	STAY	DOC	CW	Marb	BF	REA	API	TI
EPDs	16.6	-1.5	78.6	122.7	0.28	10.1	28.1	15.7	11.6	28.0	0.54	-0.035	0.59	153.8	88.3
	10	25	45	40	40	10	15	45	60	65	20	65	70	20	20

Heifer bull. Great calving ease pedigree, but check out the performance that goes with it. Put him on your heifers for a couple years and move him to the cows.



Lot 87

LASSLE RANCH SIMMENTALS

LRS CBL 25K

88

BD: 3/16/22 • ASA#: 4106680 • Tattoo: 25K
PB SM • Homo Polled • Homo Black

HOOK'S EAGLE 6E

sire: LRS FALCON 442G

LRS MS CLASS ACT 437B

LRS ELEVATE 213B

dam: CBL MS ELEVATE E167

CBL MS NIGHTRIDE C65

Act. BW	63
BW Ratio	78
Adj WW	640
WW Ratio	94
Adj YW	1098
YW Ratio	96
WDA	3.10
ADG	2.91
Adj SC	36.6

Rank	CE	BW	WW	YW	ADG	MCE	Milk	STAY	DOC	CW	Marb	BF	REA	API	TI
EPDs	16.7	-4.2	76.9	121.4	0.28	8.3	24.8	18.8	12.7	30.4	0.41	-0.060	1.02	158.6	88.0
	4	1	60	40	30	15	40	25	35	45	10	95	25	10	20

Heifer bull. Should be a sleep all night heifer bull with his top 1% BW epd and 3% CE epd ranking. RightChoice Score pending.

LRS 052K

90

BD: 2/19/22 • ASA#: 4046412 • Tattoo: 052K
1/2 SM 1/2 AN • Homo Polled • Homo Black

TEHAMA UPWARD Y238

sire: TEHAMA TAHOE B767

TEHAMA MARY BLACKBIRD Y684

NLC GEN TEN 82E

dam: LRS MS GEN TEN 052H

LRS MS ELEVATE 637D



Act. BW	72
BW Ratio	89
Adj WW	639
WW Ratio	99
Adj YW	1234
YW Ratio	107
WDA	3.09
ADG	3.78
Adj SC	36.8

Rank	CE	BW	WW	YW	ADG	MCE	Milk	STAY	DOC	CW	Marb	BF	REA	API	TI
EPDs	17.2	-2.8	79.8	123.3	0.27	9.0	24.2	20.3	6.7	40.7	0.55	0.007	0.59	161.1	87.5
	10	10	40	40	50	20	40	10	99	25	20	99	70	10	20

Heifer bull. Another heifer bull who is really cranking it on test with his 107 YW ratio. The Tahoe sons sure calve nice and have the added punch as well.

LRS 6022K

92

BD: 3/15/22 • ASA#: 4046244 • Tattoo: 6022K
1/2 SM 1/2 AN • Homo Polled • Homo Black

BASIN RAINMAKER 2704

sire: BASIN RAINMAKER 4404

BASIN JOY 1036

LRS ELEVATE 213B

dam: LRS MS ELEVATE 6022D

LRS MS SHRPR IMAGE 3012A



Act. BW	86
BW Ratio	97
Adj WW	629
WW Ratio	95
Adj YW	1038
YW Ratio	88
WDA	3.01
ADG	2.59
Adj SC	36.6

Rank	CE	BW	WW	YW	ADG	MCE	Milk	STAY	DOC	CW	Marb	BF	REA	API	TI
EPDs	12.9	-1.7	70.4	103.7	0.21	9.2	24.7	10.9	12.4	25.4	0.49	-0.015	0.45	126.8	78.4
	45	20	75	80	85	15	35	85	50	75	25	85	90	60	55

Heifer bull. The last of the Rainmaker sons we will sell. Rainmaker x Elevate is a great maternal pedigree. The udders should be awesome.

LRS 929K

94

BD: 3/19/22 • ASA#: 4046349 • Tattoo: 929K
5/8 SM 3/8 AN • Homo Polled • Homo Black

MAR INNOVATION 251

sire: LRS TOPSHELF 902F

LRS MS TOPGRADE 303A

RBS BOISE B63

dam: LRS MS BOISE 929G

LRS MS NIGHTRIDE 702E



Act. BW	88
BW Ratio	104
Adj WW	678
WW Ratio	102
Adj YW	1096
YW Ratio	93
WDA	3.06
ADG	2.66
Adj SC	40.3

Rank	CE	BW	WW	YW	ADG	MCE	Milk	STAY	DOC	CW	Marb	BF	REA	API	TI
EPDs	10.7	2.2	89.1	139.4	0.31	7.7	19.3	14.2	13.7	40.9	0.31	-0.050	0.93	128.7	83.3
	75	90	15	15	25	35	85	60	30	25	55	50	15	55	35

Attractive square hipped Top Shelf son who is really smooth through all his joints.

LRS 2019K

89

BD: 3/8/22 • ASA#: 4046494 • Tattoo: 2019K
PB SM • Homo Polled • Homo Black

RBS BOISE B63

sire: LRS BADLANDS 401F

LRS MS TEN X 401B

MCM TOP GRADE 018X

dam: LRS MS TOPGRADE 3015A

LRS MS DAKOTA 558R



Act. BW	82
BW Ratio	ET
Adj WW	587
WW Ratio	ET
Adj YW	1075
YW Ratio	ET
WDA	2.94
ADG	3.08
Adj SC	36.7

Rank	CE	BW	WW	YW	ADG	MCE	Milk	STAY	DOC	CW	Marb	BF	REA	API	TI
EPDs	13.2	-1.4	69.9	103.2	0.21	9.2	27.4	15.3	16.2	12.1	0.66	-0.075	0.67	151.7	86.0
	25	10	85	80	75	10	25	60	10	99	2	70	95	20	25

Heifer bull. Full brother sold last year to Emmons Ranch to use on some heifers. 3015A is the old donor cow who has done a great job for us.

LRS 923K

91

BD: 3/6/22 • ASA#: 4046346 • Tattoo: 923K
3/4 SM 1/4 AN • Homo Polled • Homo Black

ASR AMERICAN PATRIOT F843

sire: ASR AMERICAN PROUD H0301

ASR LITTLE DESI D6273

LRS ICONIC 303C

dam: LRS MS ICONIC 923G

LRS MS GAME ON 2030Z



Act. BW	76
BW Ratio	90
Adj WW	611
WW Ratio	92
Adj YW	1176
YW Ratio	100
WDA	3.08
ADG	3.57
Adj SC	37.6

Rank	CE	BW	WW	YW	ADG	MCE	Milk	STAY	DOC	CW	Marb	BF	REA	API	TI
EPDs	17.3	-3.1	71.4	112.7	0.26	9.9	24.5	17.0	15.0	22.2	0.44	-0.023	0.72	152.4	83.4
	10	10	70	65	55	10	40	30	20	85	35	75	45	20	35

Heifer bull. Little white on his belly, but should work on a set of heifers or young cows and take advantage of a great new sire we are using from a strong cow family.

LRS CBL 15K

93

BD: 3/13/22 • ASA#: 4106673 • Tattoo: 15K
PB SM • Polled • Homo Black

RBS BOISE B63

sire: LRS BADLANDS 401F

LRS MS TEN X 401B

LRS A PLUS 219A

dam: CBL MS A PLUS E457

LRS MS PREF STOCK 033X

Act. BW	80
BW Ratio	99
Adj WW	677
WW Ratio	100
Adj YW	1105
YW Ratio	97
WDA	3.15
ADG	2.72
Adj SC	39.5

Rank	CE	BW	WW	YW	ADG	MCE	Milk	STAY	DOC	CW	Marb	BF	REA	API	TI
EPDs	9.2	1.3	80.3	118.4	0.24	5.5	27.6	13.3	13.2	39.2	0.47	-0.078	0.90	130.9	83.5
	75	50	45	50	55	55	20	80	30	20	10	70	50	10	35

You think you have it tough - this guy was orphaned mid summer when his mom was hit by a car on the interstate. He has done quite well all things considered from a proven cow family and sired by the carcass and cowmaker Badlands.

LRS 062K

95

BD: 2/18/22 • ASA#: 4046489 • Tattoo: 062K
1/2 SM 1/2 AN • Homo Polled • Homo Black

TEHAMA UPWARD Y238

sire: TEHAMA TAHOE B767

TEHAMA MARY BLACKBIRD Y684

WS PROCLAMATION E202

dam: LRS MS PROCLAMATION 062H

LRS MS ELEVATE 6033D



Act. BW	66
BW Ratio	TW
Adj WW	593
WW Ratio	TW
Adj YW	1145
YW Ratio	TW
WDA	3.11
ADG	3.51
Adj SC	36.7

Rank	CE	BW	WW	YW	ADG	MCE	Milk	STAY	DOC	CW	Marb	BF	REA	API	TI
EPDs	13.7	-1.2	93.0	141.7	0.30	6.7	24.5	20.5	13.0	54.3	0.66	-0.005	0.77	165.1	96.0
	35	25	10	15	30	55	40	5	40	4	10	95	35	10	5

Heifer bull. Dam is a full sister to a group of flush brothers that sold extremely well last year. Progeny should have plenty of punch as well.

96

LRS 362K

BD: 3/17/22 • ASA#: 4046196 • Tattoo: 362K
PB SM • Hetero Polled • Homo Black

HOOK'S EAGLE 6E

sire: LRS FALCON 442G

LRS MS CLASS ACT 437B

LRS CROSSROADS 875Y

dam: LRS MS CROSSROADS 362A

LRS MS DAKOTA 7000T



Act. BW	82
BW Ratio	93
Adj WW	690
WW Ratio	104
Adj YW	1173
YW Ratio	99
WDA	3.32
ADG	3.05
Adj SC	38.2

Rank	CE	BW	WW	YW	ADG	MCE	Milk	STAY	DOC	CW	Marb	BF	REA	API	TI
EPDs	14.7	-2.9	67.3	104.0	0.23	7.4	25.2	19.1	11.7	18.5	0.21	-0.069	0.89	139.2	75.5
15	3	90	80	65	25	40	20	50	90	35	85	50	35	65	

Heifer bull. Another bull candidate with great maternal calving ease from a coming 10 year old cow who is still in the herd.

98

LRS 6016K

BD: 3/7/22 • ASA#: 4046248 • Tattoo: 6016K
3/4 SM 1/4 AN • Homo Polled • Homo Black

CCR WIDE RANGE 9005A

sire: GIBBS 7382E BROAD RANGE

SSF BLK LOUISE Y534

PA FULL POWER 1208

dam: LRS MS FULL POWER 6016D

LRS MS TOPGRADE 3015A



Act. BW	78
BW Ratio	89
Adj WW	643
WW Ratio	96
Adj YW	1132
YW Ratio	94
WDA	3.20
ADG	3.08
Adj SC	36.6

Rank	CE	BW	WW	YW	ADG	MCE	Milk	STAY	DOC	CW	Marb	BF	REA	API	TI
EPDs	15.1	-4.1	74.6	119.0	0.28	8.9	22.3	18.4	10.6	30.3	0.44	-0.017	0.92	155.9	86.2
20	4	60	50	40	20	60	20	75	60	35	85	15	15	25	

Another bull to keep all the daughters out of. Granddam is the 3015A donor cow. Has great stayability and will be a carcass improver as well.

99

LRS 6033K

BD: 3/2/22 • ASA#: 4046226 • Tattoo: 6033K
PB SM • Homo Polled • Homo Black

HOOK'S EAGLE 6E

sire: LRS FALCON 442G

LRS MS CLASS ACT 437B

LRS ELEVATE 213B

dam: LRS MS ELEVATE 6033D

LRS MS SHRPER IMAGE 324A



Act. BW	88
BW Ratio	100
Adj WW	648
WW Ratio	97
Adj YW	1198
YW Ratio	99
WDA	3.27
ADG	3.49
Adj SC	41.4

Rank	CE	BW	WW	YW	ADG	MCE	Milk	STAY	DOC	CW	Marb	BF	REA	API	TI
EPDs	12.9	-0.4	87.1	137.2	0.31	6.4	23.8	20.8	13.5	42.6	0.22	-0.045	0.97	143.9	83.7
25	20	20	15	15	40	50	10	25	15	35	99	35	30	30	

Heifer bull. Talk to Clay about this bull. He somehow was flying under his radar all fall and winter until he was ran to the picture pen. A really, really good bull, that should have many friends on sale day looking for heifer bulls.

100

LRS CBL 42K

BD: 3/18/22 • ASA#: 4106689 • Tattoo: 42K
3/4 SM 1/4 AN • Polled • Homo Black

CLRS FINANCIAL 619F

sire: LRS BITCOIN 437H

LRS MS CLASS ACT 437B

PVF INSIGHT 0129

dam: CBL MS INSIGHT D376

CBL TAILOR MADE 290X

Act. BW	78
BW Ratio	TW
Adj WW	705
WW Ratio	TW
Adj YW	1153
YW Ratio	TW
WDA	3.36
ADG	2.82
Adj SC	42.2

Rank	CE	BW	WW	YW	ADG	MCE	Milk	STAY	DOC	CW	Marb	BF	REA	API	TI
EPDs	9.3	2.3	81.4	130.9	0.31	3.9	28.8	17.3	12.3	48.1	0.26	-0.071	1.03	128.3	78.5
90	90	35	25	25	90	10	30	50	10	65	15	10	55	55	

Have to like these Bitcoin bulls, even though there is only a few of them. Large testicles and weaned off over 700 lbs from a dam with a 110 nursing ratio. RightChoice Score pending.

97

LRS 981K

BD: 3/20/22 • ASA#: 4046363 • Tattoo: 981K
1/2 SM 1/2 AN • Homo Polled • Homo Black

MAR INNOVATION 251

sire: LRS TOPSHELF 902F

LRS MS TOPGRADE 303A

LD CAPITALIST 316

dam: LRS MS CAPITALIST 316 981G

LRS MS ELEVATE 6026D

Act. BW	82
BW Ratio	97
Adj WW	672
WW Ratio	101
Adj YW	1152
YW Ratio	98
WDA	3.18
ADG	3.02
Adj SC	34.8

Rank	CE	BW	WW	YW	ADG	MCE	Milk	STAY	DOC	CW	Marb	BF	REA	API	TI
EPDs	13.4	-0.2	91.0	142.8	0.32	9.5	19.1	7.4	9.8	40.8	0.33	-0.005	0.55	118.7	85.0
40	45	10	10	20	15	85	99	85	25	50	95	75	75	30	

These Top Shelf bulls are all uniform in their type and kind. Have to appreciate the consistency he sires and it should be a positive for any commercial producer - a pen full of calves that look alike on shipping day.



HARPER AND "DAISY"

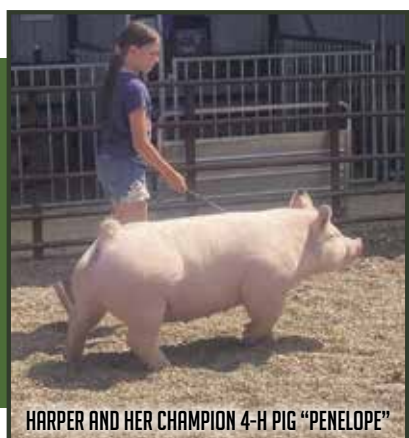


Lot 99



Lot 100

LASSLE RANCH SIMMENTALS



HARPER AND HER CHAMPION 4-H PIG "PENELOPE"

LRS CBL 31K

101

BD: 3/16/22 • ASA#: 4106684 • Tattoo: 31K
5/8 SM 3/8 AN • Homo Polled • Homo Black

RBS BOISE B63

sire: **LRS BADLANDS 401F**

LRS MS TEN X 401B

HOOK'S EAGLE 6E

dam: **CBL MS EAGLE G69**

CBL MS FULL TIME E637

Act. BW	79
BW Ratio	100
Adj WW	716
WW Ratio	106
Adj YW	1153
YW Ratio	101
WDA	3.22
ADG	2.78
Adj SC	37.6

Rank	CE	BW	WW	YW	ADG	MCE	Milk	STAY	DOC	CW	Marb	BF	REA	API	TI
101	10.7	0.5	93.5	139.5	0.29	4.7	24.3	13.0	15.9	39.7	0.66	-0.066	0.95	149.6	97.0
75	75	55	10	15	35	85	40	75	15	30	10	25	15	25	4

Large testicled Badlands bull who ratioed over 100 for both WW and YW. Dam's first calf sold through the sale last year as well. RightChoice Score pending.

LRS 756K

102

BD: 3/10/22 • ASA#: 4046273 • Tattoo: 756K
5/8 SM 3/8 AN • Hetero Polled • Homo Black

MAR INNOVATION 251

sire: **LRS TOPSHELF 902F**

LRS MS TOPGRADE 303A

LRS ICONIC 303C

dam: **LRS MS ICONIC 756E**

LRS MS ADJUSTER 425B



Act. BW	88
BW Ratio	100
Adj WW	649
WW Ratio	97
Adj YW	1274
YW Ratio	105
WDA	3.43
ADG	3.93
Adj SC	38.3

Rank	CE	BW	WW	YW	ADG	MCE	Milk	STAY	DOC	CW	Marb	BF	REA	API	TI
102	13.7	-0.4	90.3	140.1	0.31	9.7	18.1	16.4	13.2	46.7	0.25	-0.018	0.66	137.6	85.0
35	35	40	15	15	25	10	90	40	40	15	70	85	55	40	30

Cranking it on test gaining almost 4 lbs a day to ratio 105. Top Shelf proving to be a great performance sire.



LRS 886K

103

BD: 3/15/22 • ASA#: 4046319 • Tattoo: 886K
1/2 SM 1/2 AN • Homo Polled • Homo Black

MAR INNOVATION 251

sire: **LRS TOPSHELF 902F**

LRS MS TOPGRADE 303A

MCCONNELL ALTITUDE 3114

dam: **LRS MS ALTITUDE 886F**

LRS MS ELEVATE 613D



Act. BW	92
BW Ratio	106
Adj WW	712
WW Ratio	106
Adj YW	1248
YW Ratio	103
WDA	3.48
ADG	3.37
Adj SC	34.1

Rank	CE	BW	WW	YW	ADG	MCE	Milk	STAY	DOC	CW	Marb	BF	REA	API	TI
103	10.5	1.8	100.7	157.9	0.36	4.9	20.1	7.9	10.7	54.9	0.40	-0.043	0.62	120.3	90.1
75	75	80	2	2	5	80	80	99	75	4	40	50	65	70	15

Another Altitude daughter doing a great job in our herd. Has a nursing ration of 109 and a yearling ratio of 107 on her 3 calves

LRS 9157K

104

BD: 3/15/22 • ASA#: 4046379 • Tattoo: 9157K
5/8 SM 3/8 AN • Homo Polled • Homo Black

MAR INNOVATION 251

sire: **LRS TOPSHELF 902F**

LRS MS TOPGRADE 303A

HOOK'S EAGLE 6E

dam: **LRS MS EAGLE 9157G**

LRS MS DUAL FOCUS 213Z



Act. BW	78
BW Ratio	92
Adj WW	761
WW Ratio	114
Adj YW	1276
YW Ratio	108
WDA	3.52
ADG	3.27
Adj SC	37.6

Rank	CE	BW	WW	YW	ADG	MCE	Milk	STAY	DOC	CW	Marb	BF	REA	API	TI
104	14.0	0.7	102.5	157.0	0.34	8.6	19.8	14.1	15.6	48.6	0.25	-0.051	1.07	137.2	92.1
30	30	60	1	3	10	25	80	65	15	10	70	35	4	40	10

Top ranking in the growth department with his excellent WDA and over 1250 lbs at a year.

Thank You!

We need to thank our family and friends that help throughout the year whenever we call and ask...

Lyle Armstrong, Gary Miller, Jim Trangmoe, Dave Barnick, Alan Mcrae, Doug Goroski, and Gary Arneson. Arvid Corneliusen and Melvin Gaub for helping take care of fences and keeping an eye on the cows and calves all summer. Thanks to Vic's Vittles for the

great meals. The crew at Bravera Bank. Kristin Aus, Marta Asche, Lavonne Hoffer for helping clerk on sale day. Will Malcolm and Sleeping Giant Genetics for the embryo work. Rod and Marta Asche (Cracker Box Livestock) for being a great partner on some of the bulls in the sale. CHS Farmers Elevator for sponsoring the Open House Meal. And last but not least, Emily Brinkman at Generation 6 Marketing for not only the catalog but assisting with all our ads and marketing efforts.

105

LRS 739K

BD: 3/9/22 • ASA#: 4046266 • Tattoo: 739K
5/8 SM 3/8 AN • Homo Polled • Homo Black

RBS BOISE B63

sire: LRS BADLANDS 401F

LRS MS TEN X 401B

LRS ICONIC 303C

dam: LRS MS ICONIC 739E

LRS MS ROBUST 434B



Act. BW	94
BW Ratio	108
Adj WW	730
WW Ratio	109
Adj YW	1157
YW Ratio	96
WDA	3.34
ADG	2.70
Adj SC	38.2

Rank	CE	BW	WW	YW	ADG	MCE	Milk	STAY	DOC	CW	Marb	BF	REA	API	TI
65	11.4	2.6	102.2	151.6	0.31	6.9	23.8	13.2	15.0	45.1	0.61	-0.065	0.96	147.5	98.5
65	90	2	5	25	50	45	70	20	15	15	25	10	25	3	

Another great dispositioned Badlands calf who came off the cow at 730 lbs. the Badlands genetics will add some growth at weaning time and the females are sensible in their size and have a great maternal look. Good carcass bull as well.

107

LRS CBL 23K

BD: 3/15/22 • ASA#: 4106679 • Tattoo: 23K
1/2 SM 1/2 AN • Homo Polled • Homo Black

MAR INNOVATION 251

sire: LRS TOPSHELF 902F

LRS MS TOPGRADE 303A

HOOK'S BALTIC 17B

dam: CBL MS BALTIC G349

CBA MS CEDAR RIDGE B34

Act. BW	87
BW Ratio	110
Adj WW	700
WW Ratio	103
Adj YW	1174
YW Ratio	103
WDA	3.25
ADG	2.98
Adj SC	34.1

Rank	CE	BW	WW	YW	ADG	MCE	Milk	STAY	DOC	CW	Marb	BF	REA	API	TI
75	10.9	2.2	93.1	150.5	0.36	6.1	15.2	13.3	13.1	49.2	0.25	-0.024	0.60	119.7	80.9
75	90	10	5	5	65	99	70	40	10	70	75	65	70	45	

Feel like we just say it over and over about the consistency of the Top Shelf bulls. Another big footed, attractive, well balanced bull who really gets out and travels well. RightChoice Score pending.

109

LRS 770K

BD: 3/7/22 • ASA#: 4046452 • Tattoo: 770K
PB SM • Homo Polled • Homo Black

HOOK'S EAGLE 6E

sire: LRS FALCON 442G

LRS MS CLASS ACT 437B

LRS ELEVATE 213B

dam: LRS MS ELEVATE 770E

LRS MS EMBLAZON 1011Y



Act. BW	74
BW Ratio	85
Adj WW	570
WW Ratio	85
Adj YW	1048
YW Ratio	87
WDA	2.88
ADG	3.02
Adj SC	35.1

Rank	CE	BW	WW	YW	ADG	MCE	Milk	STAY	DOC	CW	Marb	BF	REA	API	TI
14.6	-3.5	73.2	114.9	0.26	5.3	22.5	18.4	11.3	36.8	0.41	-0.061	1.02	152.1	84.2	
15	2	75	55	40	60	60	30	55	25	10	85	25	20	30	

Easy to spot this Falcon son in the pens. Great EPDs and phenotype. Dam's 2 other sons have sold in previous sales.

110

LRS CBL 74K

BD: 3/24/22 • ASA#: 4106699 • Tattoo: 74K
1/2 SM 1/2 AN • Polled • Homo Black

HOOK'S ENCORE 65E

sire: NLC ZUGABE 11H

NLC F29 FOKKA

CONNELLY CAPITALIST 028

dam: CBL MS CAPITALIST F68

CBL MS INSIGHT D376

Act. BW	93
BW Ratio	115
Adj WW	661
WW Ratio	98
Adj YW	1262
YW Ratio	111
WDA	3.44
ADG	3.78
Adj SC	38.1

Rank	CE	BW	WW	YW	ADG	MCE	Milk	STAY	DOC	CW	Marb	BF	REA	API	TI
10.9	2.0	83.4	127.0	0.27	4.9	25.5	18.7	14.3	35.8	0.30	-0.028	0.96	135.0	80.2	
75	85	30	35	50	80	30	15	25	40	55	75	10	45	45	

Ratioed 111 for yearling weight and gaining almost 4 lbs a day on feed. His 5 year old dam is also ratioing over 100 for both WW and YW. RightChoice Score pending.

106

LRS 3012K

BD: 3/12/22 • ASA#: 4046198 • Tattoo: 3012K
5/8 SM 3/8 AN • Homo Polled • Homo Black

MAR INNOVATION 251

sire: LRS TOPSHELF 902F

LRS MS TOPGRADE 303A

TJ SHARPER IMAGE 809U

dam: LRS MS SHPRR IMAGE 3012A

LRS MS DAKOTA 558R



Act. BW	92
BW Ratio	105
Adj WW	723
WW Ratio	109
Adj YW	1258
YW Ratio	107
WDA	3.53
ADG	3.37
Adj SC	34.4

Rank	CE	BW	WW	YW	ADG	MCE	Milk	STAY	DOC	CW	Marb	BF	REA	API	TI
10.3	-0.4	87.6	134.5	0.29	7.6	17.9	16.1	16.3	41.0	0.35	-0.048	0.72	137.6	85.9	
80	40	20	20	35	35	90	40	10	25	50	50	45	40	25	

Grace showed his half brother last year as a steer and was Grand Champion at the county fair and 3rd overall at the Champions of champions show in Miles City. His dam is time tested and proven being a former donor cow and has productive daughters getting it done, like the 6025A cow who is the dam of lot 26

108

LRS CBL 50K

BD: 3/20/22 • ASA#: 4106694 • Tattoo: 50K
3/4 SM 1/4 AN • Homo Polled • Homo Black

CCR WIDE RANGE 9005A

sire: GIBBS 7382E BROAD RANGE

SSF BLK LOUISE Y534

HOOK'S BALTIC 17B

dam: CBL MS BALTIC G359

CBA MS TEN X A313

Act. BW	93
BW Ratio	117
Adj WW	698
WW Ratio	103
Adj YW	1221
YW Ratio	107
WDA	3.35
ADG	3.29
Adj SC	34.3

Rank	CE	BW	WW	YW	ADG	MCE	Milk	STAY	DOC	CW	Marb	BF	REA	API	TI
10.7	1.9	91.9	148.4	0.35	6.6	17.2	13.1	13.0	47.7	0.31	-0.010	0.93	128.7	85.0	
75	85	10	10	10	55	95	70	40	10	55	95	15	55	30	

Larger framed Gibbs Broad Range son who weaned off just shy of 700 lbs and kept going to ratio 107 at a year. RightChoice Score pending.



Lot 109



Lot 110

LASSLE RANCH SIMMENTALS

LRS CBL 131K

111

BD: 4/8/22 • ASA#: 4106702 • Tattoo: 131K
5/8 SM 3/8 AN • Polled • Hetero Black

HOOK'S ENCORE 65E

sire: NLC ZUGABE 11H

NLC F29 FOKKA

OPP ARSENAL 550

dam: CBL MS ARSENAL F528

LRS MS PAYBACK 651S

Act. BW	82
BW Ratio	101
Adj WW	699
WW Ratio	103
Adj YW	-
YW Ratio	-
WDA	3.28
ADG	2.71
Adj SC	34.9

Rank	CE	BW	WW	YW	ADG	MCE	Milk	STAY	DOC	CW	Marb	BF	REA	API	TI
EPDs	12.0	1.3	83.1	128.4	0.28	5.5	28.8	18.6	13.8	39.6	0.27	-0.053	0.97	136.2	80.9
60	75	30	30	40	75	10	15	30	30	65	35	10	45	45	

This calf is just a baby only being born April 8th. Too young to get a ratio for YW, but he was 103 coming off of his mom. RightChoice Score pending.



LOTS 114 AND 14 WITH THEIR DAMS, LATE FALL



Lot 114



Lot 115

LRS 016K

112

BD: 2/24/22 • ASA#: 4046433 • Tattoo: 016K
PB SM • Homo Polled • Homo Black

CCR WIDE RANGE 9005A

sire: GIBBS 7382E BROAD RANGE

SSF BLK LOUISE Y534

HOOK'S EAGLE 6E

dam: LRS MS EAGLE 016H

LRS MS BALTIC 812F

Act. BW	72
BW Ratio	90
Adj WW	616
WW Ratio	96
Adj YW	1072
YW Ratio	93
WDA	2.75
ADG	2.92
Adj SC	35.0

Rank	CE	BW	WW	YW	ADG	MCE	Milk	STAY	DOC	CW	Marb	BF	REA	API	TI
EPDs	16.0	-3.3	72.2	111.8	0.25	9.2	17.7	14.3	17.1	25.3	0.40	-0.041	1.17	144.6	83.2
10	2	75	65	50	10	95	70	3	65	15	99	10	25	35	

Heifer bull. Purebred Heifer bull out of a first calf heifer with breed leading calving ease and birthweight EPDs and carcass rankings.

LRS 9133K

113

BD: 3/19/22 • ASA#: 4046382 • Tattoo: 9133K
1/2 SM 1/2 AN • Homo Polled • Homo Black

MAR INNOVATION 251

sire: LRS TOPSHELF 902F

LRS MS TOPGRADE 303A

ELLIOTT A100

dam: LRS MS A100 9133G

SD BLACKCAP 4288

Act. BW	86
BW Ratio	101
Adj WW	673
WW Ratio	101
Adj YW	1154
YW Ratio	98
WDA	3.18
ADG	3.03
Adj SC	33.3

Rank	CE	BW	WW	YW	ADG	MCE	Milk	STAY	DOC	CW	Marb	BF	REA	API	TI
EPDs	16.5	-2.7	73.8	114.9	0.26	9.4	16.6	14.1	12.6	34.5	0.35	-0.034	0.49	140.0	80.6
10	10	60	60	55	15	95	65	45	45	50	65	85	35	45	

Great option to use on a younger set of cows with his moderate birthweight and great MCE ranking.

LRS 042K

114

BD: 2/27/22 • ASA#: 4046427 • Tattoo: 042K
5/8 SM 3/8 AN • Homo Polled • Homo Black

WS PROCLAMATION E202

sire: 307 BACKROADS 736G

PANNELL MISS 736

HOOK'S EAGLE 6E

dam: LRS MS EAGLE 042H

LRS MS EASY ANSWER 811F



Act. BW	82
BW Ratio	100
Adj WW	698
WW Ratio	108
Adj YW	1084
YW Ratio	94
WDA	2.94
ADG	2.47
Adj SC	34.7

Rank	CE	BW	WW	YW	ADG	MCE	Milk	STAY	DOC	CW	Marb	BF	REA	API	TI
EPDs	16.3	-3.0	72.8	107.6	0.22	9.8	27.0	19.4	13.6	25.7	0.53	-0.015	0.33	159.0	85.3
15	10	65	75	80	10	20	10	35	75	20	85	95	15	30	

Heifer bull. Excellent heifer bull option who will still add some performance as he weaned at just shy of 700 lbs out of a first calf Eagle daughter. Does have some white on his underline.

LRS 047K

115

BD: 2/24/22 • ASA#: 4046401 • Tattoo: 047K
1/2 SM 1/2 AN • Homo Polled • Homo Black

WS PROCLAMATION E202

sire: 307 BACKROADS 736G

PANNELL MISS 736

TJ FRANCHISE 451D

dam: LRS MS FRANCHISE 047H

LRS MS DATELINE 5103C



Act. BW	80
BW Ratio	98
Adj WW	653
WW Ratio	101
Adj YW	1049
YW Ratio	91
WDA	2.80
ADG	2.53
Adj SC	35.5

Rank	CE	BW	WW	YW	ADG	MCE	Milk	STAY	DOC	CW	Marb	BF	REA	API	TI
EPDs	13.0	-0.6	75.7	116.0	0.25	7.8	25.9	21.3	13.1	32.1	0.35	-0.010	0.27	145.6	79.0
45	35	55	55	65	35	30	3	40	50	50	95	99	30	50	

Maternally focused Backroads son. Backroads is a Proclamation son we have been running with the cows for a few years who has done a nice job. Good footed, good testicled cattle who always gives us some replacement heifers and sale bulls.

116

LRS CBL 36K

BD: 3/16/22 • ASA#: 4106686 • Tattoo: 36K
5/8 SM 3/8 AN • Homo Polled • Homo Black

RBS BOISE B63

sire: LRS BADLANDS 401F

LRS MS TEN X 401B

OPP ARSENAL 550

dam: CBL MS ARSENAL E517

LRS MS 77T-9003W

Act. BW	76
BW Ratio	92
Adj WW	627
WW Ratio	93
Adj YW	1039
YW Ratio	91
WDA	3.00
ADG	2.59
Adj SC	34.6

Rank	CE	BW	WW	YW	ADG	MCE	Milk	STAY	DOC	CW	Marb	BF	REA	API	TI
EPDs	13.0	-0.2	79.4	118.2	0.24	8.1	27.9	12.3	14.5	38.4	0.57	-0.059	0.62	141.4	87.4
45	45	40	50	70	30	15	80	25	30	20	35	65	35	20	

Tight sheathed easy going Badlands son with good milk and marbling out of a really productive coming 6 year old cow. RightChoice Score pending.

118

LRS CBL 6K

BD: 3/7/22 • ASA#: 4106670 • Tattoo: 6K
1/2 SM 1/2 AN • Homo Polled • Homo Black

MAR INNOVATION 251

sire: LRS TOPSHELF 902F

LRS MS TOPGRADE 303A

WS LIGHT SPEED E230

dam: CBL MS LIGHT SPEED G179

CBL MS. CEDAR RIDGE A23

Act. BW	69
BW Ratio	88
Adj WW	630
WW Ratio	93
Adj YW	1013
YW Ratio	89
WDA	2.82
ADG	2.44
Adj SC	32.1

Rank	CE	BW	WW	YW	ADG	MCE	Milk	STAY	DOC	CW	Marb	BF	REA	API	TI
EPDs	13.4	-1.0	79.1	121.3	0.26	8.2	20.4	13.2	14.0	34.9	0.46	-0.011	0.59	138.8	84.3
40	30	40	45	55	30	75	70	30	40	30	85	70	40	30	

This Top Shelf son is clean made and long as a well rope. RightChoice Score pending.

120

LRS 351K

BD: 3/28/22 • ASA#: 4046194 • Tattoo: 351K
PB SM • Homo Polled • Homo Black

HOOK'S BLACK HAWK 50B

sire: HOOK'S EAGLE 6E

HOOK'S CRYSTAL 1C

LRS ADJUSTER 793Y

dam: LRS MS ADJUSTER 351A

LRS MS OLIE 078X

Act. BW	82
BW Ratio	93
Adj WW	675
WW Ratio	101
Adj YW	1138
YW Ratio	96
WDA	3.23
ADG	2.94
Adj SC	35.3

Rank	CE	BW	WW	YW	ADG	MCE	Milk	STAY	DOC	CW	Marb	BF	REA	API	TI
EPDs	13.5	-2.2	75.2	117.8	0.27	5.5	21.4	22.2	13.8	27.5	0.44	-0.074	1.09	169.8	89.3
20	5	65	50	35	55	70	2	25	60	10	70	15	4	15	

Heifer bull. Dam is a coming 10 year old cow who is still in the herd. Great cow family back to the 078X cow. His Grandsire LRS Adjuster bred cows until he was 8-9 years old.

122

LRS 070K

BD: 2/27/22 • ASA#: 4046410 • Tattoo: 070K
5/8 SM 3/8 AN • Homo Polled • Homo Black

WS PROCLAMATION E202

sire: 307 BACKROADS 736G

PANNELL MISS 736

NLC GEN TEN 82E

dam: LRS MS GEN TEN 070H

LRS MS ELEVATE 616D

Act. BW	82
BW Ratio	100
Adj WW	624
WW Ratio	93
Adj YW	1098
YW Ratio	93
WDA	2.84
ADG	3.01
Adj SC	36.7

Rank	CE	BW	WW	YW	ADG	MCE	Milk	STAY	DOC	CW	Marb	BF	REA	API	TI
EPDs	14.3	0.2	69.3	107.9	0.24	8.7	26.7	18.6	10.8	29.7	0.30	-0.018	0.33	135.7	73.5
30	50	80	75	70	20	20	15	75	60	55	85	95	45	70	

I always pick a calf to be last. It has nothing to do with quality in the pen he is in. This year I asked Grace and Harper if their bull "Teddy" could be it and they said yes. Well balanced Backroads son out of a Gen Ten first calf heifer who should sire a easy calving set of offspring. Great stayability, Milk, and maternal calving ease for the convenience traits.

117

LRS 072K

BD: 2/28/22 • ASA#: 4046400 • Tattoo: 072K
1/2 SM 1/2 AN • Homo Polled • Homo Black

WS PROCLAMATION E202

sire: 307 BACKROADS 736G

PANNELL MISS 736

BASIN RAINMAKER 4404

dam: LRS MS RAINMAKER 072H

LRS MS CLASS ACT 453B



Act. BW	88
BW Ratio	107
Adj WW	641
WW Ratio	100
Adj YW	1101
YW Ratio	96
WDA	2.90
ADG	2.91
Adj SC	34.3

Rank	CE	BW	WW	YW	ADG	MCE	Milk	STAY	DOC	CW	Marb	BF	REA	API	TI
EPDs	14.0	1.7	87.7	142.9	0.35	9.1	26.8	16.2	14.9	44.0	0.47	-0.011	0.44	146.2	87.5
30	80	20	10	10	15	20	40	20	20	30	85	90	30	20	

Long sided, smooth made with a good set of testicles out of this first calf Rainmaker heifer whose dam is a full sister to the 437B cow.

119

LRS CBL 5K

BD: 3/4/22 • ASA#: 4106669 • Tattoo: 5K
1/2 SM 1/2 AN • Homo Polled • Homo Black

WS PROCLAMATION E202

sire: 307 BACKROADS 736G

PANNELL MISS 736

MCDF NEW RIVER 499B

dam: CBL MS NEW RIVER H120

CBL MS TOP TEN F268

Act. BW	70
BW Ratio	92
Adj WW	636
WW Ratio	94
Adj YW	1070
YW Ratio	94
WDA	2.81
ADG	2.76
Adj SC	34.0

Rank	CE	BW	WW	YW	ADG	MCE	Milk	STAY	DOC	CW	Marb	BF	REA	API	TI
EPDs	15.3	-1.5	72.7	112.7	0.25	9.5	24.1	14.5	11.7	34.9	0.42	-0.031	0.42	139.9	80.6
20	25	65	65	65	65	15	45	60	60	40	35	65	90	35	45

Heifer Bull. Really attractive small head on this Backroads son out of a first calf heifer that can be used on heifers. RightChoice Score pending.

121

LRS CBL 17K

BD: 3/11/22 • ASA#: 4106675 • Tattoo: 17K
1/2 SM 1/2 AN • Homo Polled • Homo Black

HOOK'S EAGLE 6E

sire: LRS FALCON 442G

LRS MS CLASS ACT 437B

MAR INNOVATION 251

dam: CBL MS INNOVATION E107

CBA MS CEDAR RIDGE B34

Act. BW	78
BW Ratio	94
Adj WW	597
WW Ratio	88
Adj YW	909
YW Ratio	80
WDA	2.68
ADG	1.98
Adj SC	35.4

Rank	CE	BW	WW	YW	ADG	MCE	Milk	STAY	DOC	CW	Marb	BF	REA	API	TI
EPDs	13.5	-2.0	78.4	129.6	0.32	6.3	22.5	17.4	15.4	39.6	0.49	-0.013	0.71	146.8	84.4
40	20	45	30	20	60	60	30	15	30	25	85	45	25	30	

Sound, deep sided Falcon son whose EPD's indicate his progeny should be above breed average for the growth traits. RightChoice Score pending.



LRS MS CAPITALIST 884F. DAM OF LOTS 5-8

Watch & bid online for **FREE** at

DVAuction
Broadcasting Real-Time Auctions

Can't make the sale? Bid from home with DV Auction's "real-time" internet bidding service!

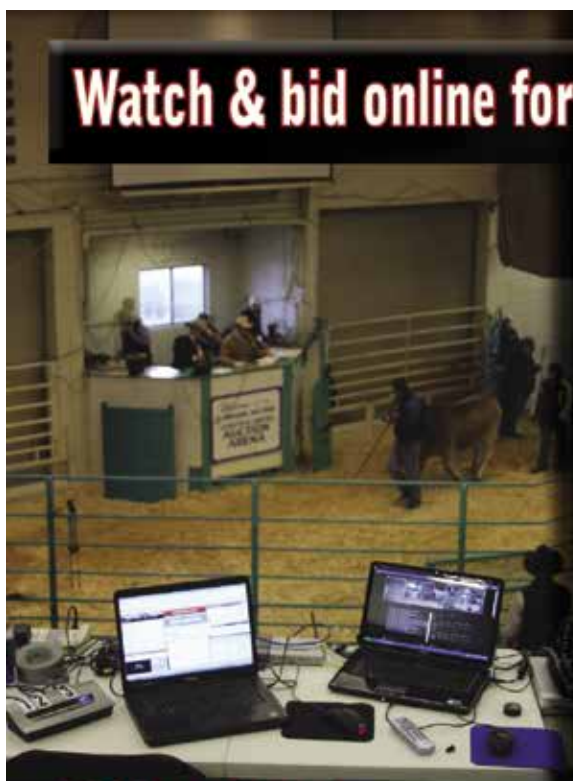
Buying online is as easy as 1, 2, 3...

1. Create an account at www.dvauction.com under the "register" tab
2. Apply for bidding approval by clicking on the "details" tab at least 24 hours prior to the auction-a DV representative will notify you once you have been approved
3. Tune in for the sale and make your purchases!

After the sale, contact the sale manager or owner to arrange transportation and payment. **High speed internet** is required for successful bidding-be sure to check the lag-time monitor in the top left corner to ensure real-time broadcasts.

Proxy Bidding-if you can't make time to watch the sale, register a proxy bid and let our system represent your bid while you're away. Look for the "proxy bid" tab on the auction listing, and fill in your maximum bids. We'll handle the rest!

Having troubles? During the auction, you can type a message to the operator at any time for assistance. Our full-time support team can also always be reached at (402) 474-5557.



DVAuction
Broadcasting Real-Time Auctions

Full Service Livestock Marketing

Video - Photography - The Stock Exchange - Ring Service - Banner Ads - Onsite Viewing Service

HOW DOES A GENOMIC TEST BENEFIT OUR CUSTOMERS?

We have been doing Genomic testing here are LRS for years and taking advantage of all the programs available through the American Simmental Association. Our entire cowherd and every calf born here gets a genomic test - even the culls. **Every bull that sells has genomically enhanced EPD's.** This does not replace phenotypic data, it enhances it. We still collect all the phenotypic traits that we can: Birthweight, Calving ease, weaning weights, yearling weights, Mature Cow weights every fall, Body condition scores, individual carcass data. The phenotypic data is irreplaceable and essential to work hand in hand with the DNA samples to enhance their EPD's.

How does it benefit you: It creates a more accurate prediction with a higher accuracy EPD because it combines not only the animals phenotypic data (BW, CE, WW, YW etc..) and pedigree, but also takes into account what gene markers the animal has that science has proven to affect certain traits. It also provides parentage verification so you can be assured the parentage is right. It is like getting an entire calf crop worth of information for bulls, before they even breed a cow.

TRAIT	PROGENY	TRAIT	PROGENY
Calving ease	25+	Stayability	15
Maternal calving ease	4	Carcass weight	6
Birth weight	22	Marbling	10
Weaning weight	25+	Ribeye area	8
Yearling weight	25+	Back fat	11
		Docility	25+

IMPROVED BUYING CONFIDENCE WITH GREATER GENOMIC ASSURANCE

The 3 Accreditation Logos below are designed to simplify bull selection and improve buyer confidence by more accurately describing the genetics offered and by reducing risk. What this means to you as a customer is a much greater assurance that you are getting both what you want and need from the genetics you purchase. What it means to your seedstock provider is access to RightMate technology that simply sets them apart from the rest of the industry.

ACCREDITED CALVING EASE - Simply find bulls with the ACE logo for third party Accredited, secure Calving Ease bulls. Though we have had tools in the past to assist in choosing heifer bulls, we've never had one nearly this effective. The reduced risk that comes with this genomic certification will simply make your decisions easier and your heifer calving season more successful. Purchase special purpose ACE bulls with confidence. They will deliver consistent and predictable calving ease.



ACCREDITED TERMINAL MATE - Just like an ATM machine makes it simpler to access your cash, the ATM Logo highlights bulls accredited to generate extra cash income as soon as your next calf crop! These bulls are meant specifically to use only on mature cows and for the purpose of adding performance, pay weight and end product value to market.



ACCREDITED GENOMIC PLUS - For the majority of producers who simply need consistent and balanced genetic improvement, without genomic setbacks, G+ Accredited bulls should be on your list for premium purchase. These sires will absolutely move you forward for both cost reduction and income producing traits and substantially reduce risk when compared to all other evaluation programs. It's simple, the right genes are in these bulls to help secure a profitable future and the they have great EPDs to match!



RightMate
powered by TOP GENOMICS

Terms & Conditions

TERMS AND CONDITIONS

1. Terms of the sale are cash or check at the time of the sale unless other arrangements are made prior to sale.
2. Each animal becomes the property of and therefore is also the risk of the purchaser as soon as it is sold; except it shall be the obligation of the seller to see that animals are fed and cared for free of charge to purchaser, until loaded for shipment or until the expiration of twenty-four hours after the sale, whichever occurs first. We guarantee the cattle to be healthy sale day.
3. We will abide by the rules set forth by the American Simmental Association.
4. As we have no control over the acts of God, we cannot guarantee these cattle against death loss, injury or sickness. We guarantee cattle to be healthy sale day.
5. Every animal selling is guaranteed be free of all known genetic defects at the time of the sale either by know genetic defect free pedigree or by negative DNA test. Lassle Ranch Simmentals is not liable for any genetic defects not recognized by the ASA or such defect that has no available commercial DNA test at the time of the sale.

We will keep the website updated with any information we get between the time the catalog goes to print and sale day.
www.lassleranchsimmentals.com

Cattle are available for your inspection any time. Feel free to come ahead of sale day.

BUYER VOLUME DISCOUNTS

We will be offering Discounts for volume bull buyers:

- 3 head – 3%
- 4 head – 4%
- 5 or more head 5%

ANNOUNCEMENTS

All announcements and changes made by the auctioneer will take precedence over printed material. Anyone attending the sale attends at their own risk. Lassle Simmentals or any of the sale force will not be responsible for any personal injury or loss for attending the sale.

SIGHT UNSEEN PURCHASES

We guarantee all sight unseen purchases. Call ahead of time and we will go over the offering. You can leave a bid with us or a representative. You will be treated as if you are here. A video of sale cattle is available on www.lassleranchsimmentals.com

DELIVERY

We will offer free delivery within 400 mile radius of Glendive, MT. Other delivery arrangements will be made as economically as possible, based upon the volume of the purchase.

AFTER SALE CARE

\$100.00 off cattle that are taken sale day. Free feed on any bull until the first of April. On the bulls that we winter, we will have them fertility tested and fertility certificates issued. Insurance will be available sale day – we encourage you to insure bulls that we winter.

SEMEN INTEREST

Lassle Ranch Simmentals is selling all bulls in their entirety. Full possession, and 100% semen interest in all bulls will be sold. Lassle Ranch Simmentals does reserve the right to in herd use semen on any bull in the sale, at the cost of collection. Should the need arise for us to collect semen on a bull in your possession, it would be done at our expense and your convenience

FULL PURCHASE VALUE EXTENDED WARRANTY ON SALE BULLS

Every bull selling carries a 100% guarantee extended warranty for one breeding season provided the bull is managed properly and acceptable nutritional physical health. In the event a customer has any problem in with a bull (health, injury or death) prior to or during the bulls first breeding season the customer should immediately contact Lassle Ranch Simmentals to report a claim. A veterinarian's statement of the problem will be required and Lassle Ranch reserves the right to have the bull returned if deemed necessary. A replacement bull of mutually agreed upon quality will be provided if Lassle Ranch has one available. In the event a satisfactory replacement is not available, the customer will be given a full credit (minus salvage value) to be used in a future Lassle Ranch Sale. LRS will not be held responsible under any circumstances for any settlement amount exceeding the purchase price of bull. No one can guarantee that every animal will perform perfectly, but at Lassle Ranch Simmentals we can guarantee that we will make things right if they do not.

TESTICLE MEASUREMENTS

The scrotal circumference of each bull was tape-measured the week before Christmas while clipping the bulls. The scrotal measurement were adjusted to yearling and sometimes will vary one way or another as actual yearlings. We guarantee our bulls 100% for fertility – unless damage is induced at your ranch – and then it's out of our control.

RECOMMENDATIONS FOR SCROTAL CIRCUMFERENCE

MONTHS OF AGE	12-14	15-20	21-30	30+
SCROTAL CM	35	37	39	40 - EXCELLENT
	30-35	31-37	32-39	33-40 - GOOD
	30	31	32	33 - POOR

SUGGESTED GUIDELINES FOR USING YEARLING BULLS

We are firm believers in the use of yearling bulls and feel it is one of the best years of their lives. It is a time when they are easy to manage and their only concern is breeding cows. We have found that yearling bulls that are managed carefully during the second year of their lives, not only do well, but they will perform better over time. Below are some suggested guidelines for the care of yearling bulls.

- Upon deliver to your ranch, keep yearling bulls separate from older bulls and feed them a maintenance ration of 5-8 lbs per head of grain and free choice hay. Reduce the amount of grain fed gradually, so that bulls are on straight hay or grass 2-4 weeks prior to the breeding season.
- Where possible try to limit the bulls and put them in separate pastures with plenty of good quality grass. It is best to achieve the growth and strength to compete with older bulls for feed and space.
- You will see the benefit of a little added cost and care of feeding a yearling bull by probably two or three more years of service from a well managed and healthy bull.

UNDERSTANDING LOT NUMBER COLOR CODES

Green Ear Tags – Purebred Simmental Bulls
Blue Ear Tags – 3/4 Simmental
Yellow Ear Tags – 5/8 or 1/2 Simmentals
White Ear Tags – 1/4 to 3/8 Simmentals

Catalog designed by



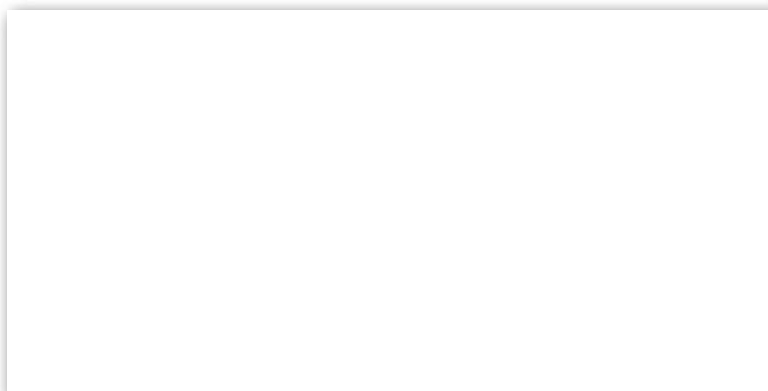
www.generation6.co

LRS

LASSLE RANCH SIMMENTALS



LASSLE RANCH SIMMENTALS
42 ROAD 245
GLEN DIVE, MT 59330



LRS *Ms Eagle* 983G

DAM OF LOTS 1, 2, 3, 4, 13, 47
AND THE DAM OF LRS RARITY 983J



JOIN US FOR OUR 30TH ANNUAL BULL SALE!
FEBRUARY 9, 2023 AT THE RANCH

Selling 120 Simmental & SimAngus Bulls

FREE DELIVERY • BULLS AVAILABLE TO VIEW ANYTIME
SIGHT UNSEEN & FIRST YEAR BREEDING SEASON GUARANTEES